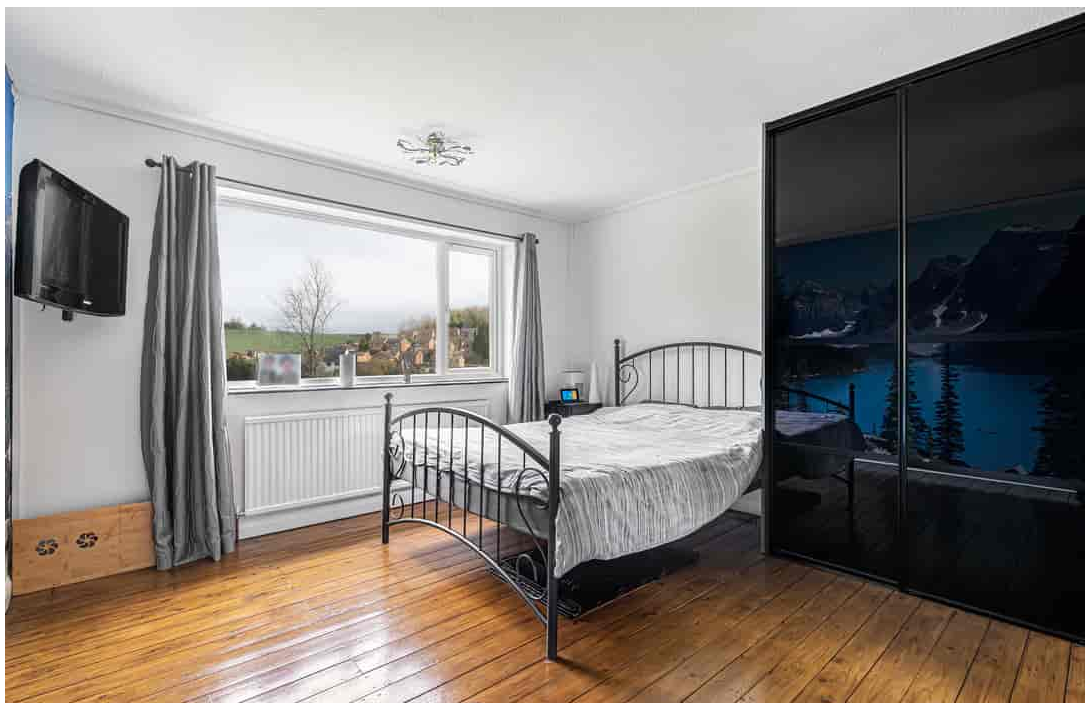




BarrettMove



**Longreach, Goodwood Rise, Marlow, Buckinghamshire SL7 3QE**  
**Guide Price £795,000 - Freehold**



## PROPERTY SUMMARY

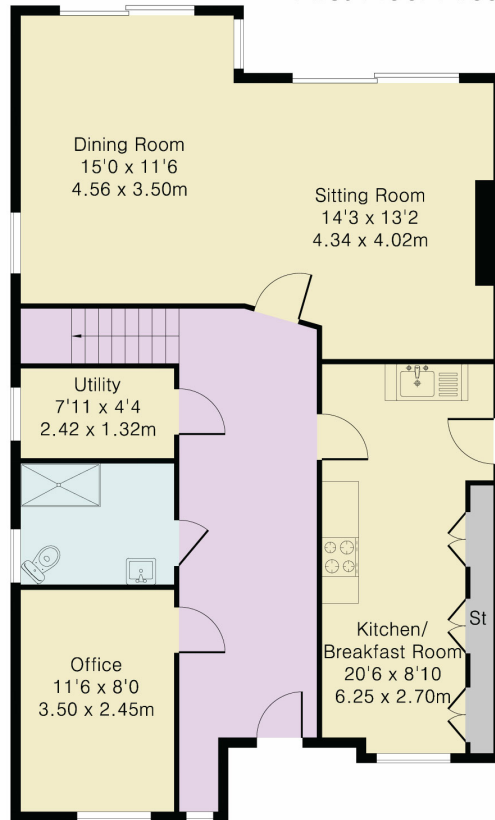
Barrett Move is delighted to bring to market a well presented four bedroom detached home tucked away in a peaceful cul de sac in Marlow Bottom.

## POINTS OF INTEREST

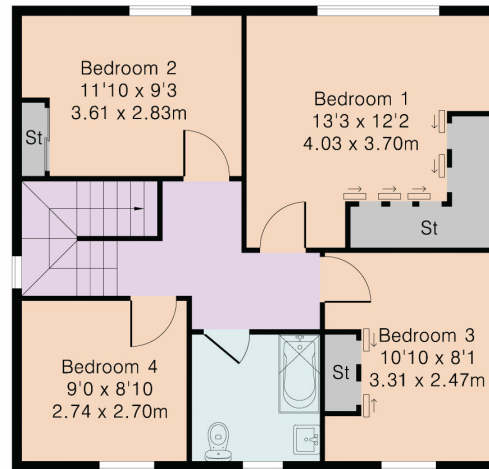
- \*\*\*\*\*CHAIN FREE\*\*\*\*\*
- Contemporary decor
- Large lounge with doors to the garden
- Flexible accommodation for family life
- Lovely garden with views
- Kitchen/diner
- Home office
- Underfloor heating in kitchen and bathroom
- Close to village amenities and woodland walks
- In catchment for Burford primary, Great Marlow and excellent grammar schools



Approximate Gross Internal Area 1591 sq ft – 148 sq m  
 Ground Floor Area 987 sq ft – 92 sq m  
 First Floor Area 604 sq ft – 56 sq m



Ground Floor



First Floor



Although Pink Plan Ltd ensures the highest level of accuracy, measurements of doors, windows and rooms are approximate and no responsibility is taken for error, omission or misstatement. These plans are for representation purposes only as defined by RICS code of measuring practise. No guarantee is given on total square footage of the property within this plan. The figure icon is for initial guidance only and should not be relied on as a basis of valuation.

Energy Efficiency Rating		Current	Potential
<i>Very energy efficient - lower running costs</i>			
(92-100)	<b>A</b>		
(81-91)	<b>B</b>		81
(69-80)	<b>C</b>		
(55-68)	<b>D</b>	63	
(39-54)	<b>E</b>		
(21-38)	<b>F</b>		
(1-20)	<b>G</b>		
<i>Not energy efficient - higher running costs</i>			
England, Scotland & Wales			
EU Directive 2002/91/EC			