

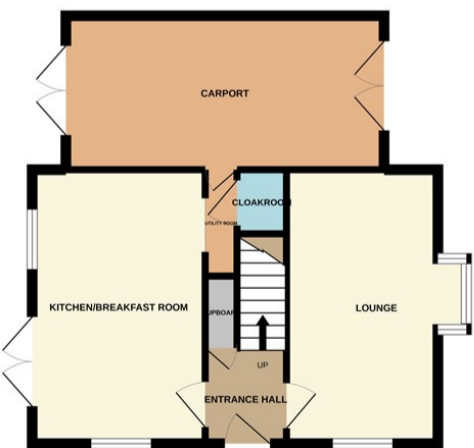


Bourne

£260,000

GROUND FLOOR

1ST FLOOR



MODERN THREE/FOUR BEDROOM STAMFORD HOMES BUILT DETACHED FAMILY HOME WITH ENSUITE TO MASTER BEDROOM Offers are invited in excess of £260,000 for this detached property is located on the South side of Bourne town on a small and very popular development with easy access to Tesco's and the Grammar school. The current owners have retained a quirky and versatile sitting room/study landing as originally built by the builders which has a Juliet balcony overlooking the rear garden. In a number of these properties the arch has been replaced with a more traditional door to provide a more conventional 4th bedroom. The property downstairs benefits from a kitchen/diner, lounge, utility room and cloakroom. Outside there is a car port providing off street parking and an enclosed rear garden." EPC Rating C/ Council Tax Band C