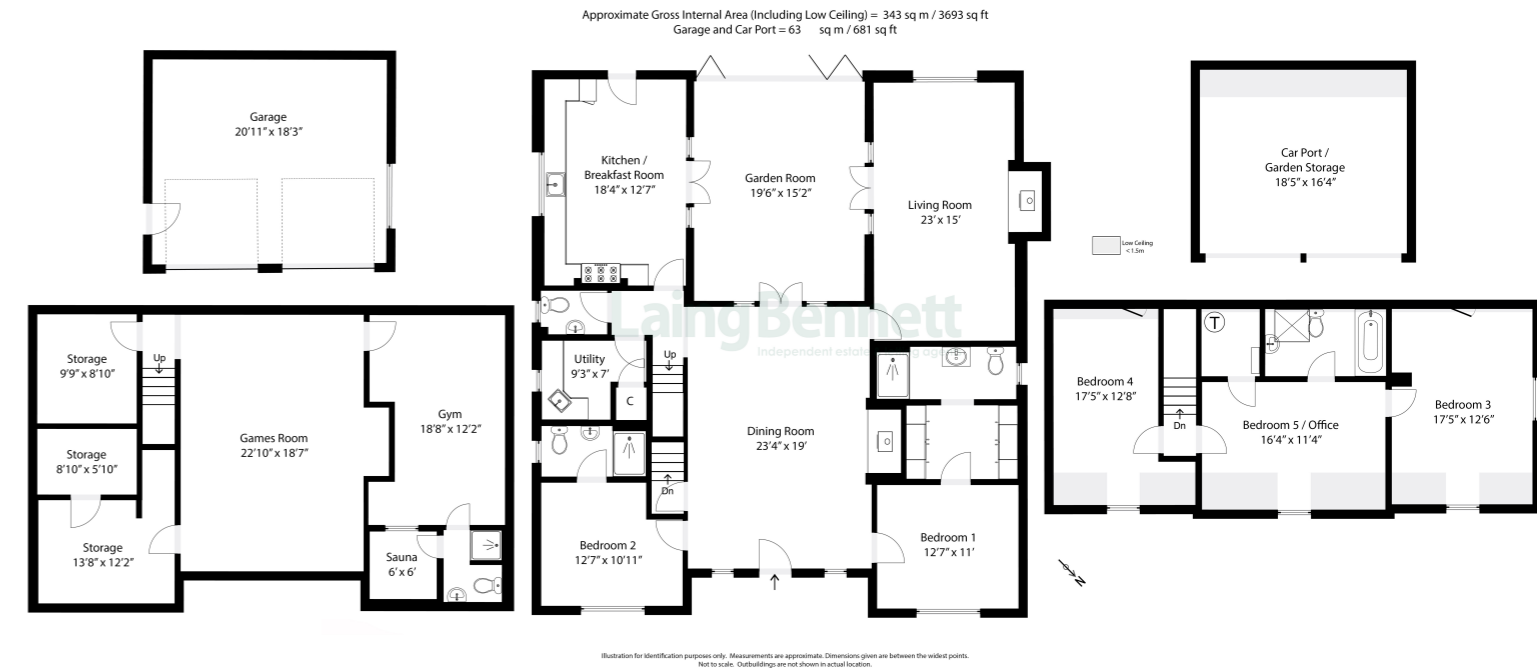




Greenacre, Exted, Elham, Canterbury, Kent. CT4 6YG



A substantial four/five bedroom family home with land totalling approximately 6.36 Acres. If you are looking to immerse yourself in the natural beauty of the countryside then look no further. This peaceful and quiet location offers a welcome retreat from the hustle and bustle of city life, allowing you to unwind and enjoy a slower pace of living. EPC RATING = C

Guide Price £1,250,000

