



9 Whittle Court,  
Knowlhill, Milton Keynes, MK5 8FT

Tel: 01908 231 551   
mail@elevationstateagents.com



**Flat 53 Dashwood House, Akerlea Close,  
Netherfield, Milton Keynes,  
Buckinghamshire, MK6 4JW**

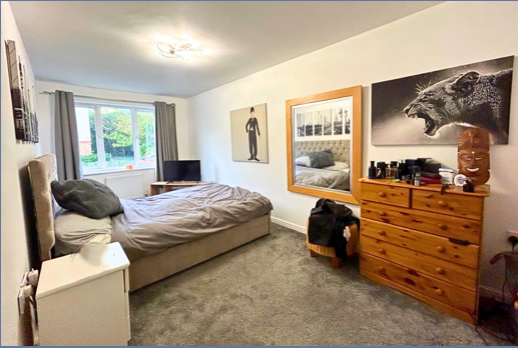
**£170,000 Leasehold**

- Secure Gated Complex
- Ground Floor Apartment
- Two Good Size Bedrooms
- Great investment of first time buy
- Large living and dining area
- EPC Rating



See our full selection of properties online at [www.elevationstateagents.com](http://www.elevationstateagents.com)





A great size ground floor apartment situated in a secure gated complex situated to the outskirts of Netherfield. The two bedroom apartment is well presented and benefits from a bright lounge/diner with windows to two aspects allowing natural light, a fitted kitchen, bathroom, secure entry and communal gardens.

Netherfield has a mix of local shops, takeaways and services, providing convenient access to goods and services. Also there are local schools nearby, green spaces and parks for outdoor activities. It is also conveniently situated for access to Milton Keynes Hospital and the City Centre.

The ground rent is £150 per year, service charge £110 per month

### **Disclaimer**

Whilst we have endeavoured to prepare our sales particulars accurately none of the services, appliances or equipment have been tested. A buyer should satisfy themselves on such matters prior to purchase. Any measurements or distances mentioned in these particulars are for guide reference only. If such particulars are fundamental to a purchase, buyers should rely on their own enquiries. All enquiries should be directed to Elevation Estate Agents in the first instance.