



Olympic Way, Wembley, HA9 0GE

Cow & Co
LONDON



GUIDE PRICE £400,000-£450,000

A wonderful one bedroom apartment situated on the 11th floor of this much sought after residential building which offers amazing views of Wembley Stadium and Olympic Way.

The property has been finished to a high specification and offers approximately 597 sq/ft of accommodation, including general storage. It also has a lovely private balcony ideal for relaxing on. Marathon House is situated along Olympic Way and on your doorstep is The London Designer Outlets and Box Park as well as Wembley Park (Metropolitan & Jubilee lines) station.

Marathon House has a wonderful open plan secured entrance from both sides and has a concierge on site as well as a large, well equipped gymnasium and Podium garden for the residents. There are also lifts to all floors.

The property is Chain Free and early viewing is highly recommended.

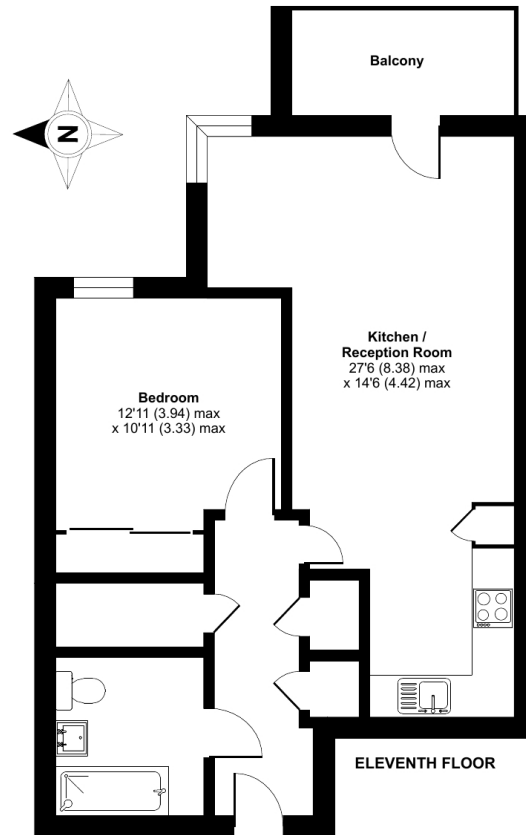


- 11th floor one bedroom apartment
- Beautiful development superbly maintained
- Balcony with amazing views
- Lifts to all floors
- Open plan reception room/diner/kitchen
- Bathroom/wc
- Close to superb amenities including Wembley Park station
- Gymnasium & concierge on site
- Long lease
- Wembley Stadium station with trains direct into Marylebone
- Wembley central with Overground and Bakerloo

Olympic Way, Wembley, HA9

Approximate Area = 597 sq ft / 55.5 sq m

For identification only - Not to scale



Floor plan produced in accordance with RICS Property Measurement Standards incorporating International Property Measurement Standards (IPMS2 Residential). © nchecon 2023. Produced for Cow & Co Properties Ltd. REF: 1138682

Tel: 0208 065 0010
Email: thehub@cowandco-london.com
Web: cowandco-london.com

Agents note: All measurements are approximate and whilst every attempt has been made to ensure accuracy they are for general guidance only and must not be relied on. The fixture and fittings referred to have not been tested and therefore no guarantee can be given that they are in working order. Internal photographs are reproduced for general information and it must not be inferred that any item shown is included with the property.

Cow & Co
LONDON