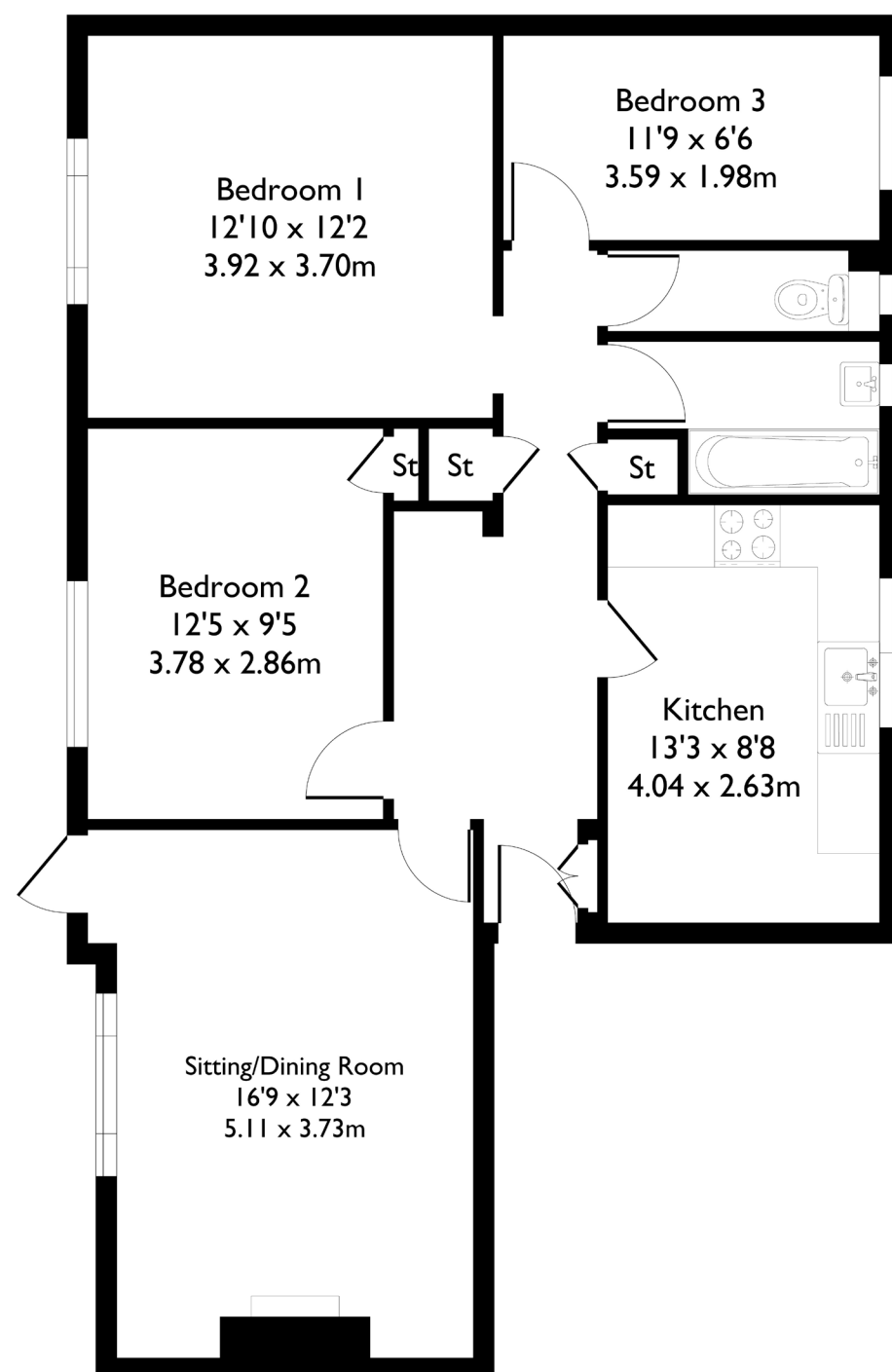


## Westfield Road, London, W13

Approximate Floor Area = 80.3 sq m / 864 sq ft



**Ground Floor**



### 3 BEDROOM FLAT

## Westfield Road, W13

Guide Price £475,000

Welcome to this three-bedroom, one-bathroom home, offering a spacious separate kitchen/diner, a bright reception room, and a private garden.

The property is well-presented throughout, with plenty of natural light and a practical layout that makes it ideal for both families and professionals.

### FEATURES

- Three Bedrooms
- One Bathroom/  
Separate W/C
- Separate Kitchen/Diner
- Northfields Amenities
- Northfields Station/West  
Ealing Station
- Local Schools Nearby
- EPC Rating C





3 BEDROOM FLAT

## Westfield Road, W13

Perfectly located just 5 minutes from Northfields and West Ealing amenities, you'll find cafés, shops, and local conveniences right on your doorstep.

Excellent transport links include West Ealing Station (Elizabeth Line) within 15 minutes and Northfields Station (Piccadilly Line) within 20 minutes, alongside well-connected local bus routes. The home also falls within sought-after local school catchments, making it a fantastic option for families. EPC Rating C.

