

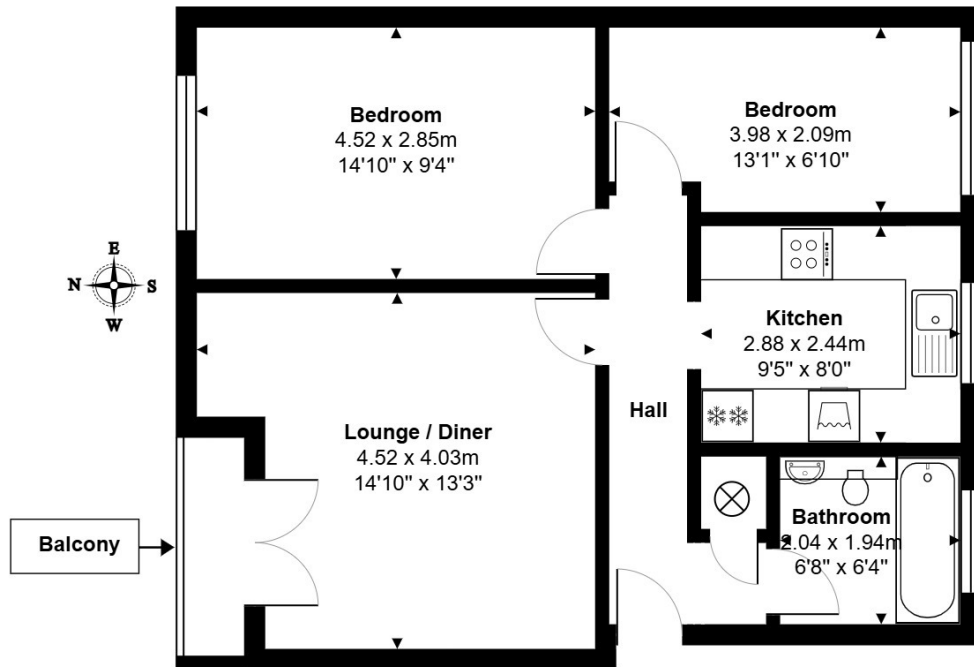


Waters Drive, STAINES- UPON-THAMES, TW18 4RJ

SHARE OF FREEHOLD | WELL PRESENTED & SPACIOUS TWO BEDROOM APARTMENT SITUATED IN THE MUCH SOUGHT AFTER MOORMEDE DEVELOPMENT IDEALLY POSITIONED WITHIN MOMENTS OF STAINES TOWN CENTRE & MAINLINE TRAIN STATION AND PROVIDING EASY ACCESS TO LOCAL MOTORWAY NETWORKS & HEATHROW AIRPORT. The property benefits from a spacious lounge/diner with balcony, separate modern fitted kitchen, two double bedrooms, modern white bathroom suite and garage. Viewings Highly Recommended!

ROOM DESCRIPTIONS

FLOORPLAN



Total Area: 57.7 m² ... 621 ft²

All measurements are approximate and for display purposes only.

127a, High Street, Staines-upon-Thames, TW18 4PD

01784 451458

staines@gregory-brown.co.uk