



9 Whittle Court,  
Knowlhill, Milton Keynes, MK5 8FT

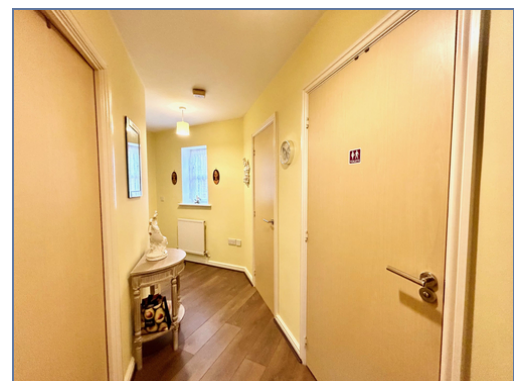
Tel: 01908 231 551   
mail@elevationstateagents.com



**28 Mccorquodale Road, Wolverton, Milton  
Keynes, Buckinghamshire, MK12 5GP**

**£92,400 Leasehold**

- Two double bedroom
- Two bathroom
- Chain Free
- Ground floor apartment
- No premium
- Gated allocated parking
- 44% Share
- EPC Rating



See our full selection of properties online at [www.elevationstateagents.com](http://www.elevationstateagents.com)



We are delighted to be instructed to sell this immaculately presented and incredibly spacious two bedroom ground floor flat. Offered for sale as a 44% share on the ever popular shared ownership scheme, the property is an ideal first time purchase for someone looking to get on the housing ladder and is conveniently located within walking distance of Wolverton railway station. The accommodation fully comprises of communal entrance hall with electronically controlled entry system, entrance hall, open plan lounge/kitchen area, master bedroom with en-suite shower room, bedroom two and a bathroom. There is also an allocated parking space. Any interested parties must meet the criteria of Paradigm Housing Association, details of which can be obtained from them.

Monthly rent : £315.60

Monthly service charge : £44.80

83 years left on lease.

## Disclaimer

Whilst we have endeavoured to prepare our sales particulars accurately none of the services, appliances or equipment have been tested. A buyer should satisfy themselves on such matters prior to purchase. Any measurements or distances mentioned in these particulars are for guide reference only. If such particulars are fundamental to a purchase, buyers should rely on their own enquiries. All enquiries should be directed to Elevation Estate Agents in the first instance.