



Three Bedroom End of Terrace House  
Russett Farm, Rainham, Gillingham, Kent, ME8 7AT

Guide Price £375,000  
Freehold



# Russett Farm, Rainham, Gillingham, Kent, ME8 7AT

Guide Price £375,000

Freehold

## Description

Guide Price £375,000 – £400,000 - Tucked away within the exclusive gated development of Russett Farm, this stunning three-bedroom end-of-terrace home offers the perfect balance of modern style and countryside tranquillity – ideal for first-time buyers or growing families looking for that next special move. Built in 2006 and thoughtfully renovated throughout to a superb standard, this home is ready for you to move straight in – simply unpack and start enjoying life in this picture-perfect setting. Step inside and you’re greeted by a welcoming entrance hall with a handy downstairs W/C and understairs storage. The stylish kitchen is a real showstopper – fitted with chic shaker-style Howdens cabinetry, generous worktops, and integrated Zanussi appliances – it’s a dream space for aspiring home cooks and dinner party hosts alike. To the rear, the light-filled lounge/diner is the ultimate place to relax or entertain, with dual aspect windows and French doors opening onto a beautifully landscaped, low-maintenance south-facing garden. Whether you’re hosting a summer BBQ, soaking up the sun, or enjoying the peaceful orchard views, this outdoor space offers something special all year round. Upstairs, you’ll find three generous bedrooms, a contemporary family bathroom, and a luxurious en suite to the main bedroom – recently fitted for that added touch of elegance and privacy. Outside, there’s plenty of practical storage, side access to the garden, an en-bloc garage, and allocated parking – everything you need for comfortable, easy living. Located in the semi-rural haven of Lower Rainham, this home combines countryside charm with fantastic transport links, good schools, local shops, and all the amenities you need within easy reach.

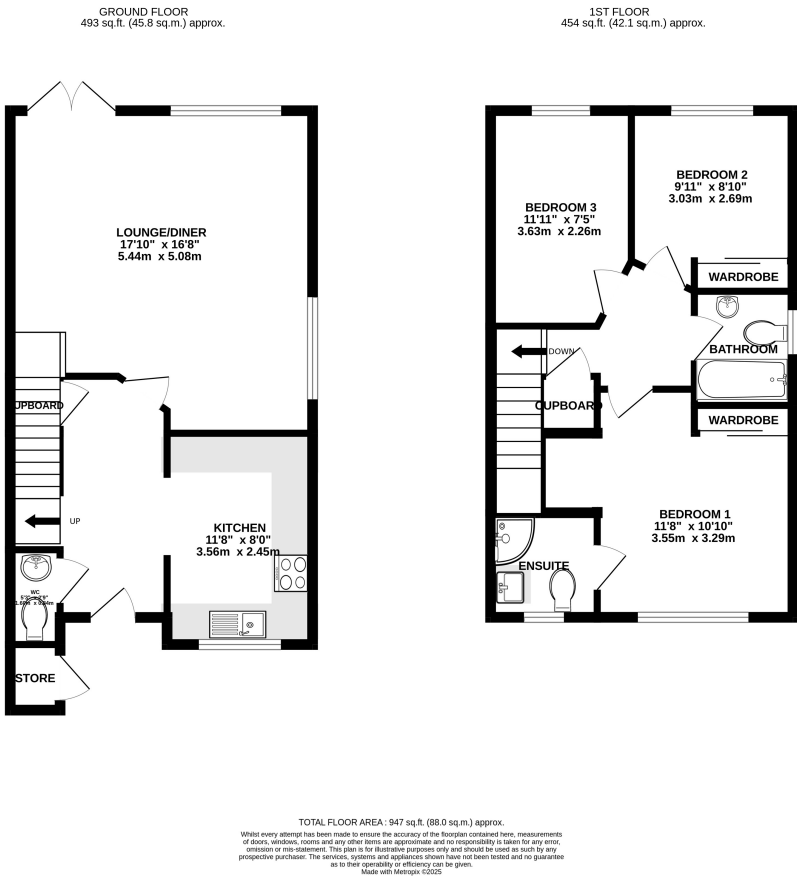
Whether you’re stepping onto the property ladder or looking to upgrade your lifestyle, this is one opportunity you won’t want to miss. Contact the Greyfox Sales Team in Rainham today to arrange your viewing – your dream home is waiting!

## Key Features

- End Of Terrace Home Located In Semi Rural Lower Rainham
- Tucked Away In An Exclusive Gated Development
- Stylish Shaker Howdens Kitchen With Integrated Appliances
- Recently Fitted Luxurious En Suite Bathroom To The Main Bedroom
- Beautifully Presented & Finished To A High Standard Throughout
- Great Access To Motorway Links, Public Transport, Schools & Amenities
- Garage En Bloc & Allocated Parking
- South Facing Landscaped Low Maintenance Garden Measuring Approx 23 x 25ft

## Local Area

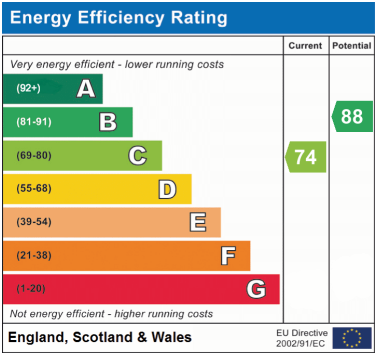
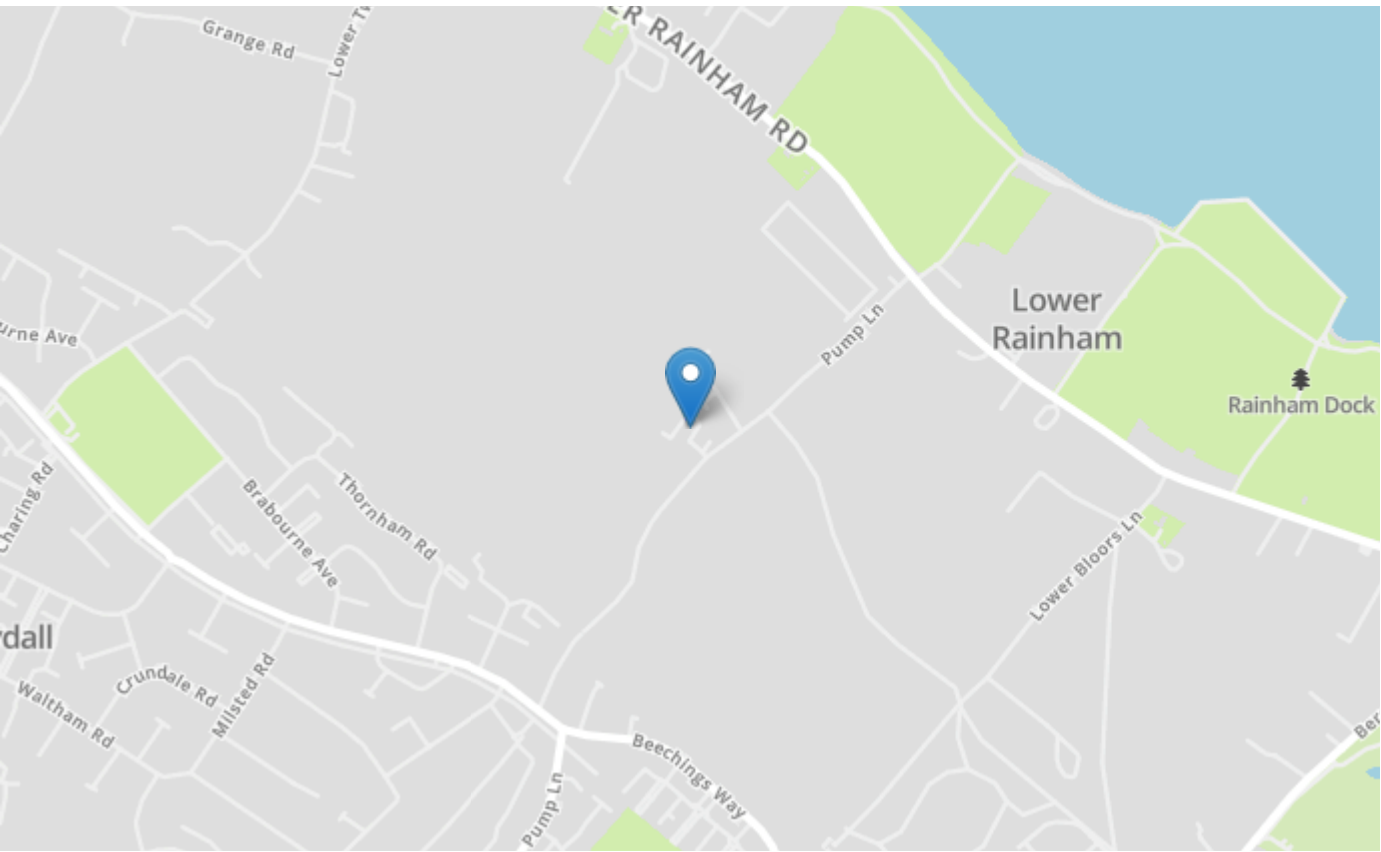
Rainham in the Medway towns is located descending towards the banks of the river Medway, approximately 39 miles from London. The ancient Watling Street main road (A2) runs through the town with the M2 motorway on the southern edge with good links to the M25/M20. There are a good number of shops and facilities within the town, a mainline station and a selection of local schools including Rainham Mark Grammar School.





## Property Location

Russett Farm, Rainham, Gillingham, Kent, ME8 7AT



Tenure	Freehold
Lease Term	N/A
Ground Rent	N/A
Service Charge	£376.50 1/7/25-31/12/25
Local Authority	Medway
Council Tax	Band D

**Greyfox Walderslade**  
 Unit 2, Thetford House  
 Walderslade Village Centre  
 Walderslade Road  
 Chatham  
 Kent  
 ME5 9LR  
 Tel: 01634 672227 Email:  
 walderslade@greyfox.co.uk

**Greyfox Rainham**  
 67C High Street  
 Rainham  
 Kent  
 ME8 7HS  
 Tel: 01634 377737 Email:  
 rainham@greyfox.co.uk

**Agent Notes**  
 These particulars are prepared as a general guide to a broad description of the property and should not be relied upon as a statement or representation of fact and do not constitute part of an offer or contract. The seller does not make or give nor do our employees or Greyfox have authority to make or give any representation or warranty to the property. We have not carried out a structural survey and the services, appliances and specific fittings have not been tested. All photographs, measurements, floorplans and distances referred to are given as a guide only and should not be relied upon for the purchase of carpets or any other fixtures or fittings. Lease details, service charges and ground rent (where applicable) and council tax are given as a guide only and should be checked and confirmed by you on inspection and your solicitor prior to exchange of contracts. If there are any points of particular importance to you we will be pleased to check the information for you and to confirm that the property remains available. This is particularly important should you be travelling some distance to view and where statements have been made by us to the effect that the information has not been verified. The copyright of all details, photographs and floorplans remain exclusive to Greyfox. For details of our privacy policy and referral fee arrangements with any of our selected partner companies please visit <https://www.greyfox.co.uk/legal/privacy> and <https://www.greyfox.co.uk/referral-fees>.