





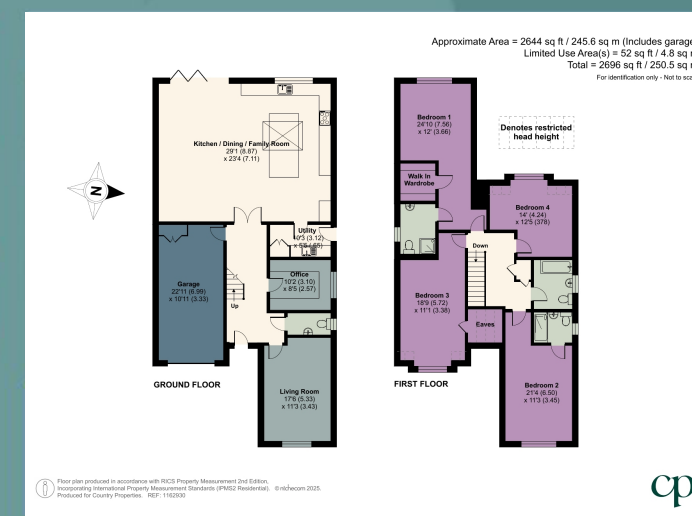
REDUCED



Shefford Road, Meppershall. SG17 5LL

O.I.E.O £875,000

-  Type: Detached House
-  Reception Rooms: 2
-  Tenure: Freehold
-  Council Tax: Band G
-  Bedrooms: 4
-  EPC Rating: B
-  Bathrooms: 2



01462 811822 | shefford@country-properties.co.uk