

GALAXY HOUSE, LEONARD STREET

LONDON EC2A 4LX

To Let

- Top floor apartment
- 736 sqft (approx)
- Large private decked terrace
- 2 bed 1 bath

This two bedroom apartment has one of the largest, decked private terraces in Galaxy House, a former Victorian Warehouse building on Leonard Street, right in the centre of Shoreditch. Internally the apartment spans circa 736 sqft (approx.) of purely lateral living, accommodation comprises of 2 double bedrooms, modern bathroom and open plan living space with fully fitted kitchen to one side. The apartment features large floor to ceiling windows allowing plenty of light to flood the space, wood floors throughout and neutral décor plus the building benefits from lift access and a small amount of communal bike storage.

Leonard Street is conveniently located for transport connections being located between City Road and Tabernacle Street; Old Street Station is just 200m away which offers the Northern Line tube and mainline



GALAXY HOUSE, LEONARD STREET

LONDON EC2A 4LX

train services plus Liverpool Street Station is around a 10 minute walk.

Available from February 28th and offered unfurnished

T B 
THE PROPERTY BROKERS



020 7993 6553

INFO@TBAPROPERTY.COM

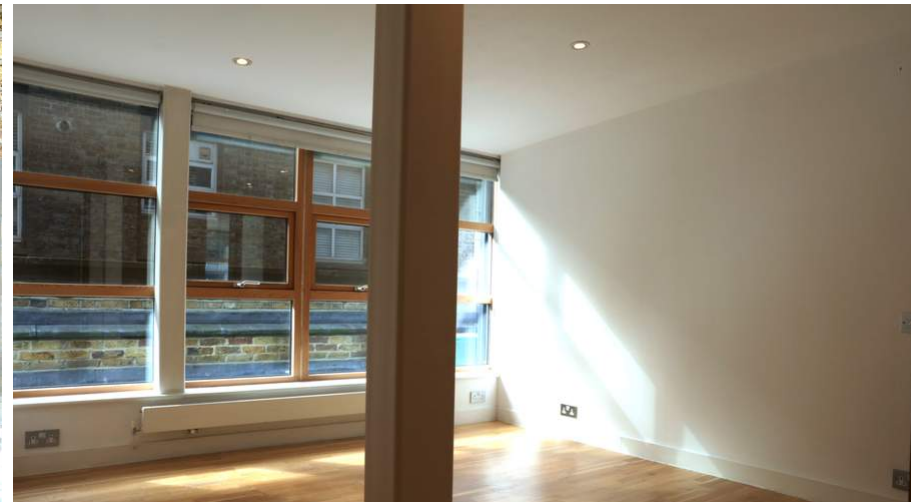
WWW.TBAPROPERTY.COM

GALAXY HOUSE, LEONARD STREET

LONDON EC2A 4LX

T B 

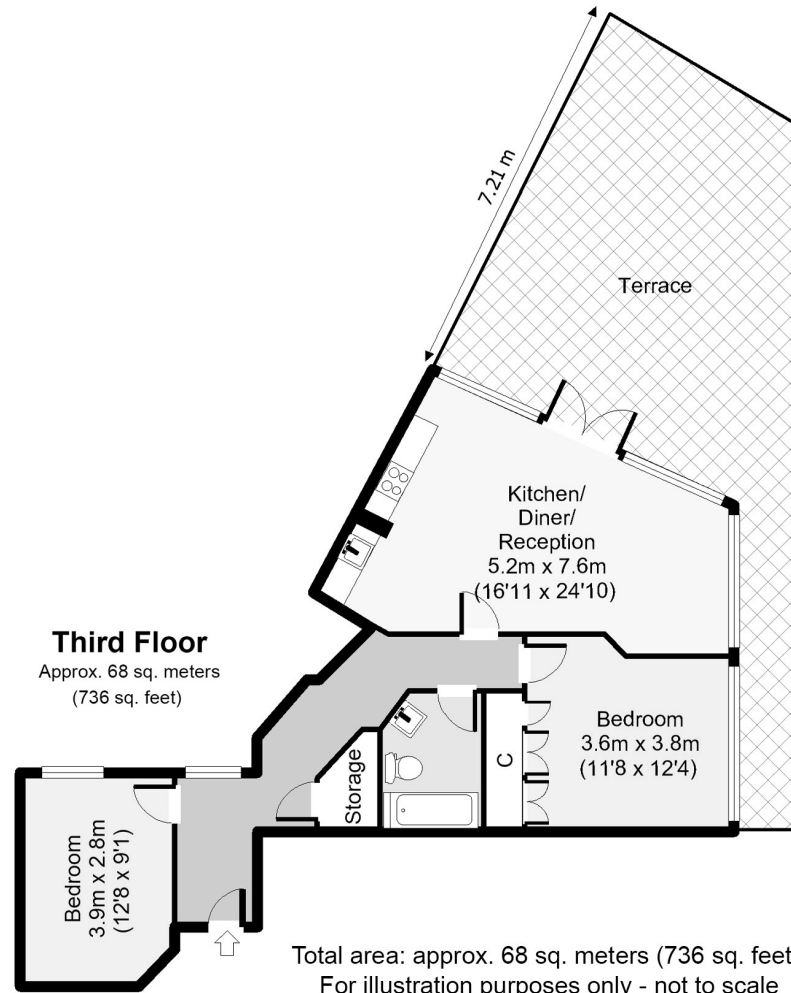
THE PROPERTY BROKERS



020 7993 6553

INFO@TBAPROPERTY.COM

WWW.TBAPROPERTY.COM



SALES
LETTINGS
OFF MARKET
ACQUISITIONS
DEVELOPMENT
COMMERCIAL
VALUATIONS

TOBIAS ALLAN

Director

07970 963 478

JAMES DANTON

Director

07930 858 612

ADAM JONES

Director

07769 275 027

