

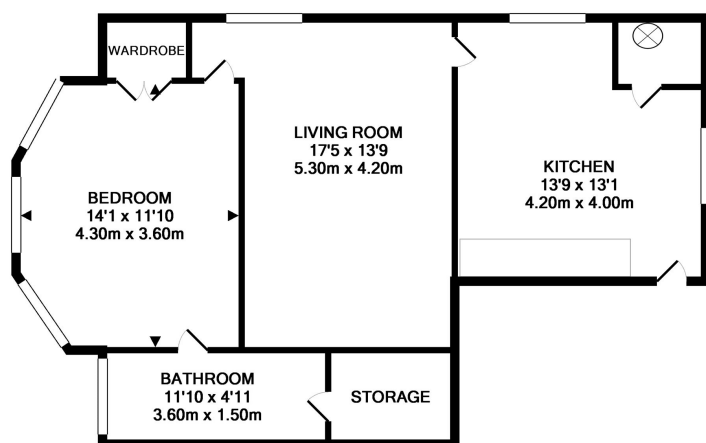
TO LET
£775 pcm



DESCRIPTION

A stunning Victorian one bedroom ground floor apartment situated in a lovely quiet tucked away position. The property boasts lots of character, gas fired central heating, double glazing throughout and a beautiful large communal garden.

FLOOR PLAN



TOTAL APPROX. FLOOR AREA 646 SQ.FT. (60.0 SQ.M.)

Whilst every attempt has been made to ensure the accuracy of the floor plan contained here, measurements of doors, windows, rooms and any other items are approximate and no responsibility is taken for any error, omission, or mis-statement. This plan is for illustrative purposes only and should be used as such by any prospective purchaser. The services, systems and appliances shown have not been tested and no guarantee as to their operability or efficiency can be given
Made with Metropix ©2016

- Good size kitchen/ breakfast room
- Living room
- Double bedroom with bay window
- Bathroom
- Storage area
- Gas fired central heating
- Available from 1st November 2021

ENERGY EFFICIENCY RATING

| Energy Efficiency Rating | | Current | Potential |
|---|---|-------------------------|-----------|
| Very energy efficient - lower running costs | | | |
| (92 to 100) | A | | |
| (81 to 91) | B | | |
| (69 to 80) | C | | 75 |
| (56 to 68) | D | 58 | |
| (39 to 54) | E | | |
| (21 to 38) | F | | |
| (1 to 20) | G | | |
| Not energy efficient - higher running costs | | | |
| England, Wales & N.Ireland | | EU Directive 2002/91/EC | |

