



FARNSWORTH COURT, OSIER LANE, LONDON SE10 0RG

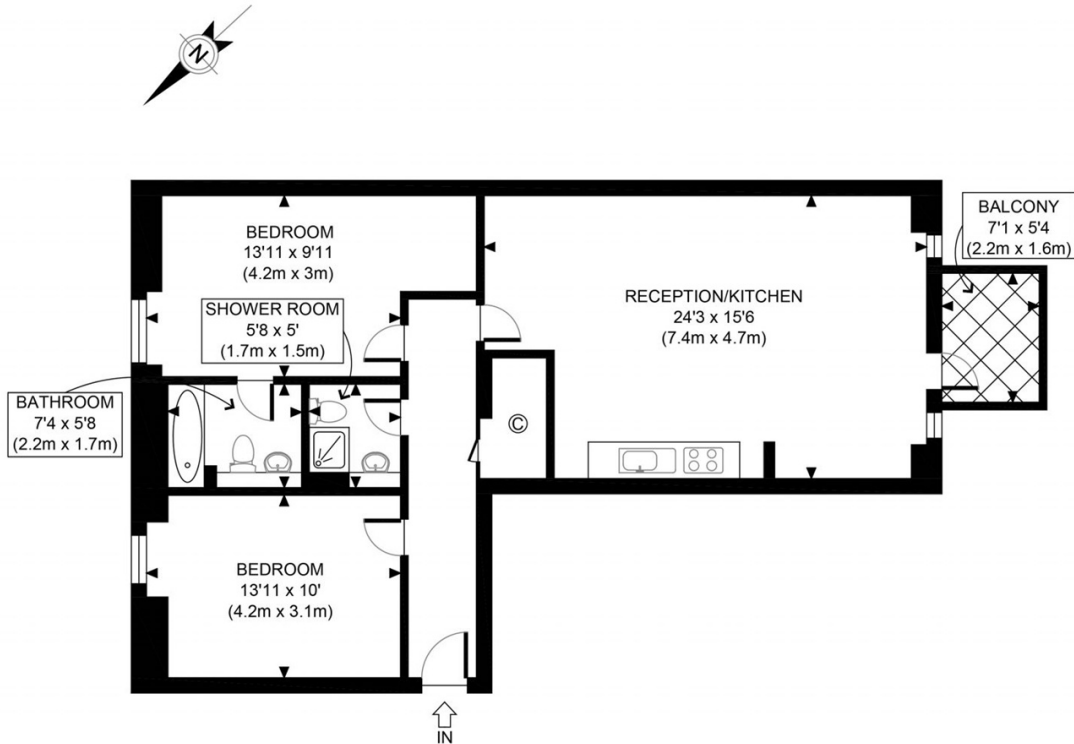
Fantastic second floor two bedroom, two bathroom apartment situated in the sought after Greenwich Millennium Village. The spacious property boasts over 860 square feet of floor space with a large open plan kitchen reception room, private balcony with views of over the ecology park and two double bedrooms.

**£2,000
PCM**

VIEWING BY APPOINTMENT WITH 1ST AVENUE. CALL: 020 8293 8600

**60 FARNSWORTH COURT,
OSIER LANE, LONDON
SE10 0RG**

£2,000 PCM



SECOND FLOOR
GROSS INTERNAL
FLOOR AREA 860 SQ FT

APPROX. GROSS INTERNAL FLOOR AREA 860 SQ FT / 80 SQM

Ref:

Copyright **photoplan**

Disclaimer: Floor plan measurements are approximate and are for illustrative purposes only.

While we do not doubt the floor plan accuracy and completeness, you or your advisors should conduct a careful, independent investigation of the property in respect of monetary valuation

**VIEWING BY APPOINTMENT
WITH 1ST AVENUE.**

CALL: 020 8293 8600

1stavenue
Real Estate Services