

FOR SALE

Godolphin Road,
Shepherd's Bush, W12

Flat
West London

£775,000 fh

2  1  1 

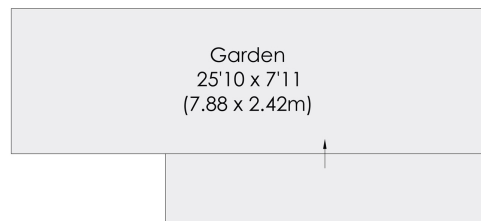


**horton
andgarton**

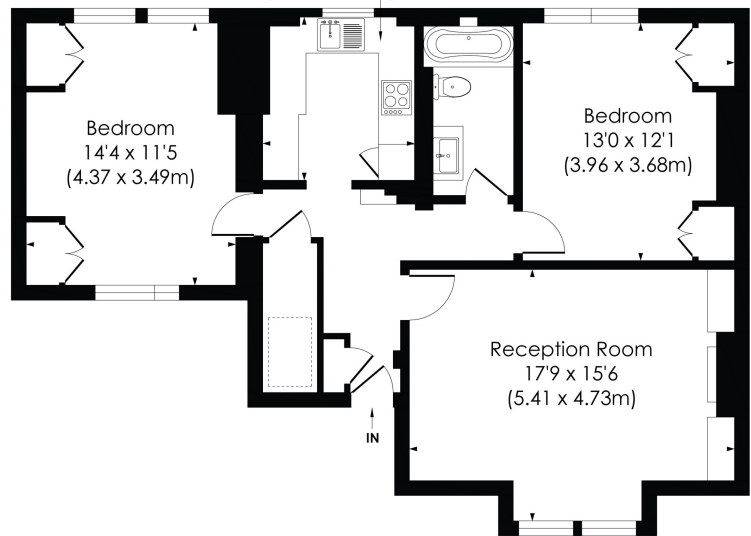
SALES / LETTINGS / PROPERTY MANAGEMENT

hortonandgarton.co.uk | Sales 020 8819 0510 | Lettings 020 8819 0511
172 King Street, Hammersmith, W6 0QU





Kitchen
8'11 x 8'4
(2.71 x 2.53m)



RAISED GROUND FLOOR

GODOLPHIN ROAD, W12

Approx. Gross Internal Area
829 Sq. ft/77.00 Sq. m



© Pixangle Property Marketing Ltd. info@pixangle.com Tel: 0208 870 2118

This floor plan has been prepared for the purpose of illustration only in accordance with the latest RICS code of measuring practice and is not to scale. All measurements and areas are approximate and whilst every effort has been made to ensure the accuracy of the plan contained here, no responsibility is taken for any error, omission or misstatement.



Victorian conversion | Two bedrooms - One bathroom |
829 Sq' - 77 SqM | Turnkey finish | EPC rating E |
Shepherd's Bush



hortonandgarton.co.uk
Sales 020 8819 0510
Lettings 020 8819 0511

172 King Street, Hammersmith, W6 0QU