



28 Hillcrest Avenue, Bexhill-on-Sea, East
Sussex, TN39 4DA

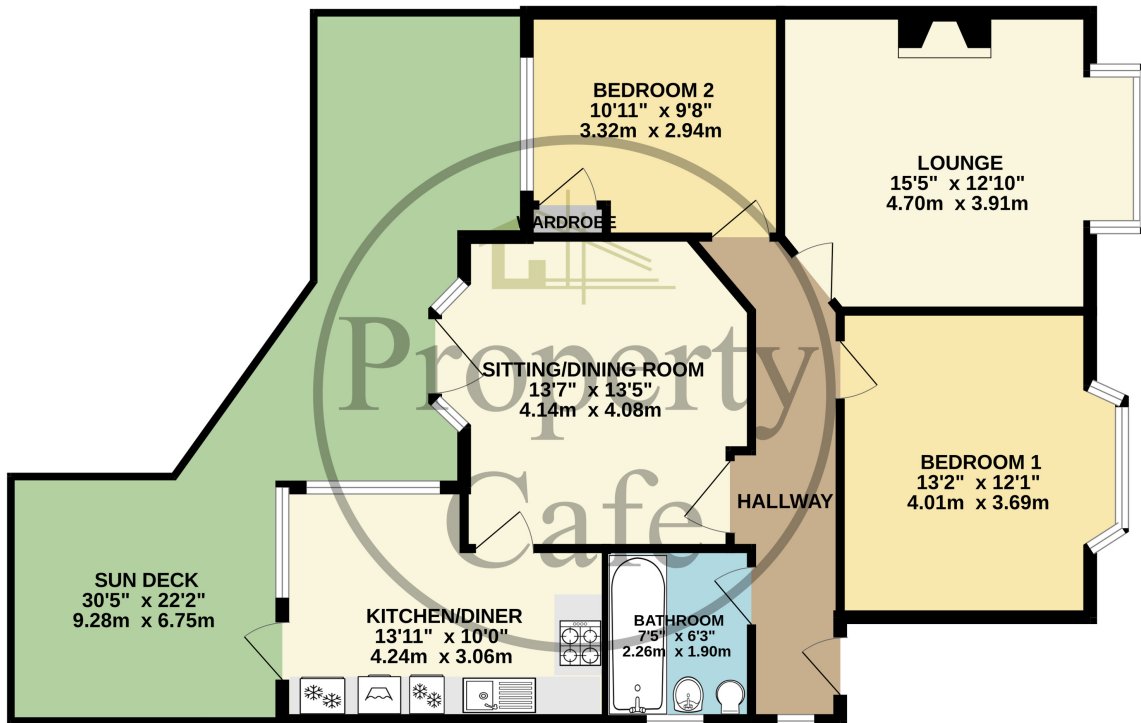
£369,950



- Spacious Detached Character Bungalow
- Two Double Beds / Two Receptions
- Spacious West Facing Lounge
- Modern Kitchen & Bathroom
- Separate Dining Room With Patio Doors
- Full Width Raised Decked Patio Area
- Low Maintenance Front Garden
- Rear Garden With Vehicle Access
- Lovely Neutral Decoration Throughout
- Central Heated & Double Glazing
- Off Road Parking To The Rear
- Good Size Storage Loft Space
- Planning Permission Granted To Extend
- Sought After & Peaceful Location
- Vendor Has Found So Short Chain !



GROUND FLOOR
845 sq.ft. (78.5 sq.m.) approx.



TOTAL FLOOR AREA : 845 sq.ft. (78.5 sq.m.) approx.
Whilst every attempt has been made to ensure the accuracy of the floorplan contained here, measurements of doors, windows, rooms and any other items are approximate and no responsibility is taken for any error, omission or mis-statement. This plan is for illustrative purposes only and should be used as such by any prospective purchaser. The services, systems and appliances shown have not been tested and no guarantee as to their operability or efficiency can be given.
Made with Metropix ©2024

