

Cranmer Court Flat 1 Pleydell Gardens

Folkestone
CT20 2DN

£170,000 LEASEHOLD

FOR SALE WITH BURNAP + ABEL... Burnap + Abel are delighted to offer this town centre located two bedroom apartment, ideal for shops and The Leas Promenade. The property is in our opinion in excellent decorative order and the accommodation comprises lounge/kitchen/diner, shower room, two bedrooms and en-suite. Additional benefits include a long lease and no onward chain. For your chance to view call sole agent Burnap + Abel now on 01303 258590.



Lounge/Kitchen/Diner

27' 8" x 12' 7" (8.43m x 3.84m)

Bathroom

7' 4" x 5' 9" (2.24m x 1.75m)

Bedroom One

10' 7" x 12' 5" (3.23m x 3.78m)

En-Suite Shower Room

Bedroom Two

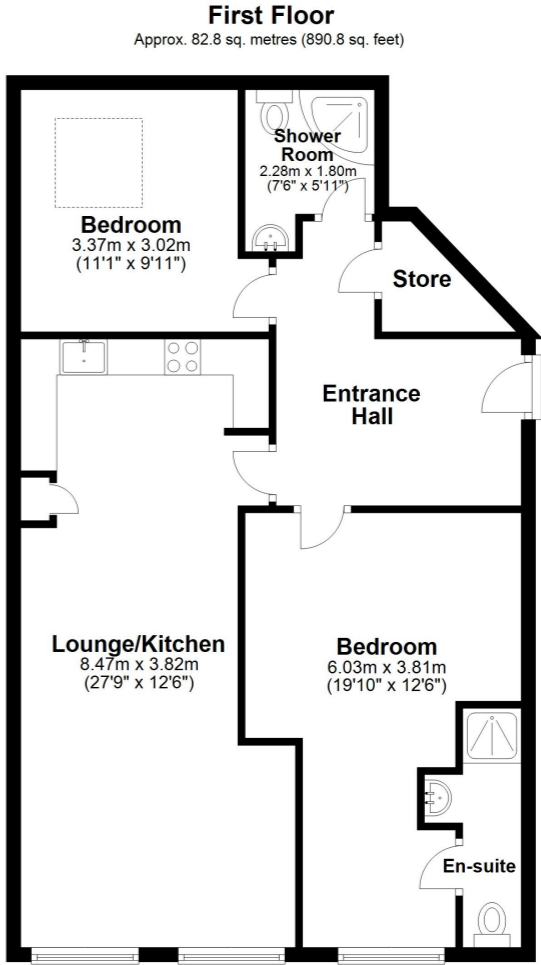
11' 1" x 9' 9" (3.38m x 2.97m)

Lease + Service Charge Information

We understand the property has a long lease at approximately 900+ years.

The service charge is approximately £100 pcm and the ground rent is £125 per annum.

The property currently has a section 20 notice for work to the roof. Estimated at approximately £10,000 per apartment although currently there are not any exact prices.



Total area: approx. 82.8 sq. metres (890.8 sq. feet)

Whilst every attempt has been made to ensure the accuracy of the floor plan contained here, measurements of doors, windows, rooms and any other items are approximate and no responsibility is taken for any error, omission or mis-statement. This plan is for illustrative purposes only and should be used as such by any prospective purchaser.
Plan produced using PlanUp.

