







This well-appointed period semi-detached home has been modernised while retaining some stunning original features. Located in a sought-after area close to shops, schools, and the high-speed railway station, it sits on a popular residential road and benefits from a new brick-paved driveway. The ground floor offers an entrance hall with two cupboards, a spacious living room with a log burner, and an open-plan kitchen/dining room at the rear with French doors opening to the garden and stripped floorboards. On the first floor, the landing leads to three bedrooms and a stylish modern bathroom with a bath and separate shower. Outside, the delightful south facing rear garden features a large patio with a pergola, a lawn, mature borders and various fruit trees. EPC RATING = C

Guide Price £525,000

Tenure Freehold

Property Type Semi-Detached House

Receptions 2

Bedrooms 3

Bathrooms 1

Parking Driveway

Heating Gas

EPC Rating C

Council Tax Band D

Folkestone & Hythe District Council



Situation

The property is well located in the heart of Cheriton on Wells Road. Cheriton High Street offers an array of shops and banks. Local amenities include; large supermarkets, independent shops, library, Morehall Primary and secondary schools including The Turner Free School and Harvey Grammar School and leisure facilities. Folkestone West railway station is within walking distance and has a high speed service to London. This property is also within easy reach of the M20 motorway and Channel Tunnel. Approximately 1.5 miles to the East is the ever popular Port town of Folkestone which is the home of 'The Creative Quarter' boasting a thriving collection of Artist's studios and creative businesses, as well as a wide range of amenities such as Shopping centre, Supermarkets, independent shops, restaurants and leisure facilities, Folkestone benefits from the recently restored Harbour Arm which has become an increasingly popular food, drink and entertainment destination for the town and its visitors.



The accommodation comprises

Ground floor

Entrance hall

Living room

15' 11" x 11' 1" (4.85m x 3.38m)

Open plan kitchen and dining room

19' 8" x 17' 4" (5.99m x 5.28m)

Kitchen area

Dining area

First floor

Landing

Bedroom one

13' 11" x 11' 9" (4.24m x 3.58m)

Bedroom two

11' 1" x 10' 5" (3.38m x 3.17m)

Bedroom three

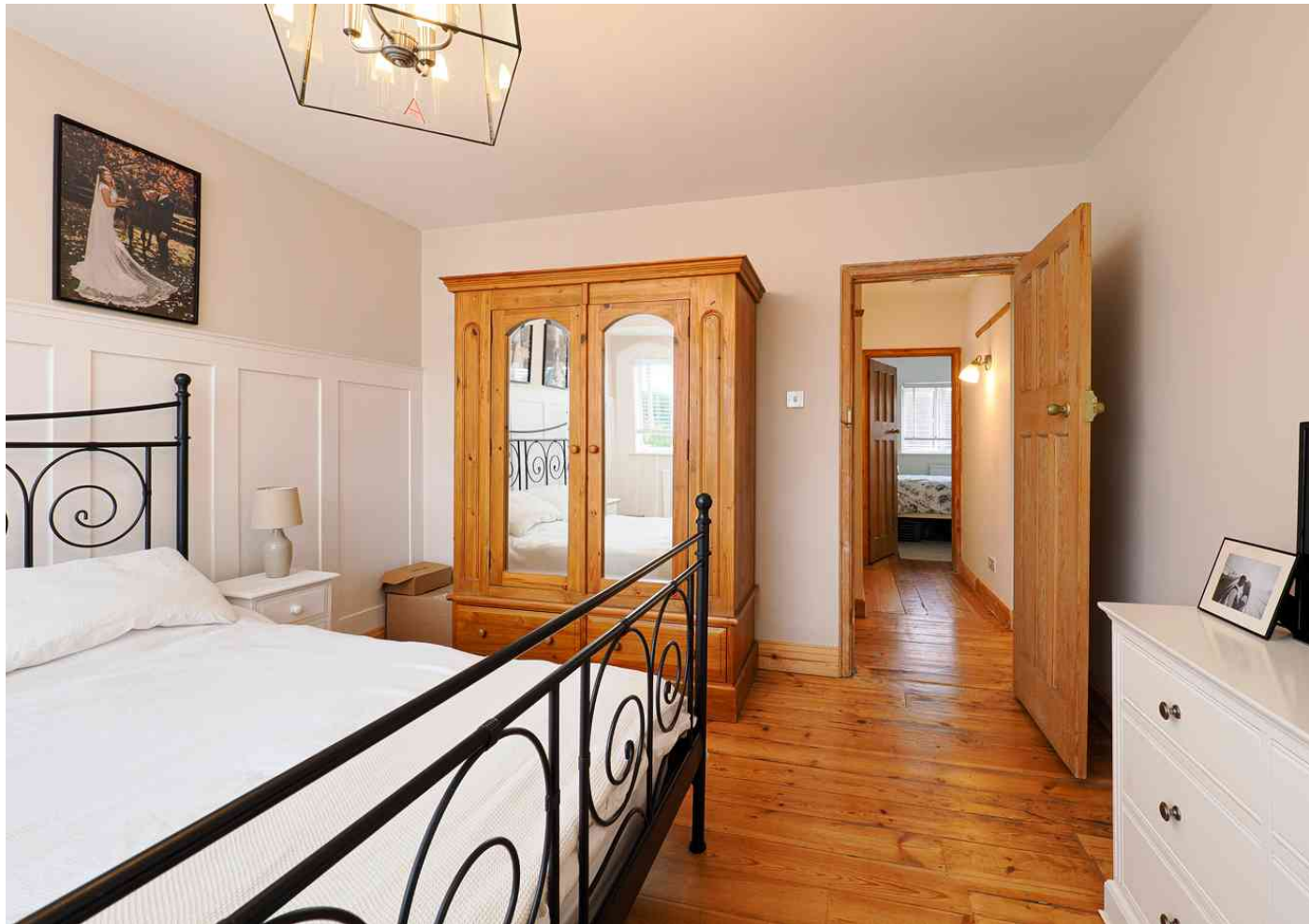
11' 11" x 7' 6" (3.63m x 2.29m)

Bathroom

Outside

Frontage and new brick paved driveway

Enclosed rear garden







Approximate Gross Internal Area (Including Low Ceiling) = 105 sq m / 1131 sq ft

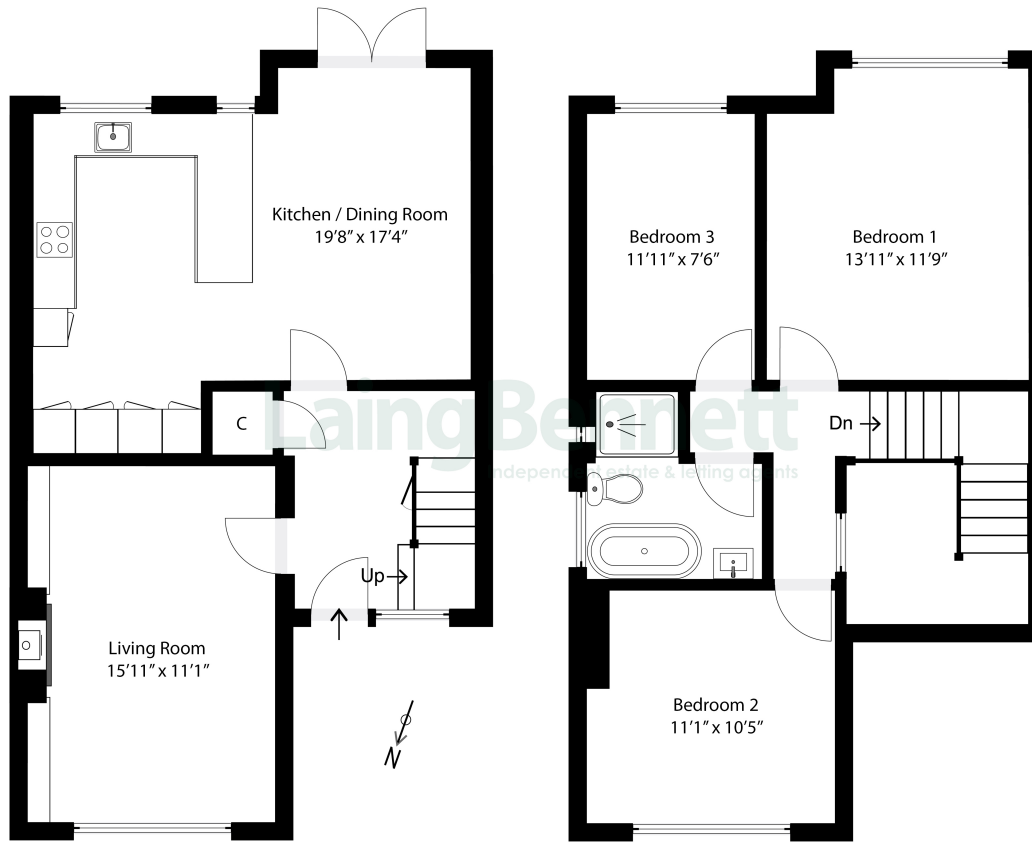
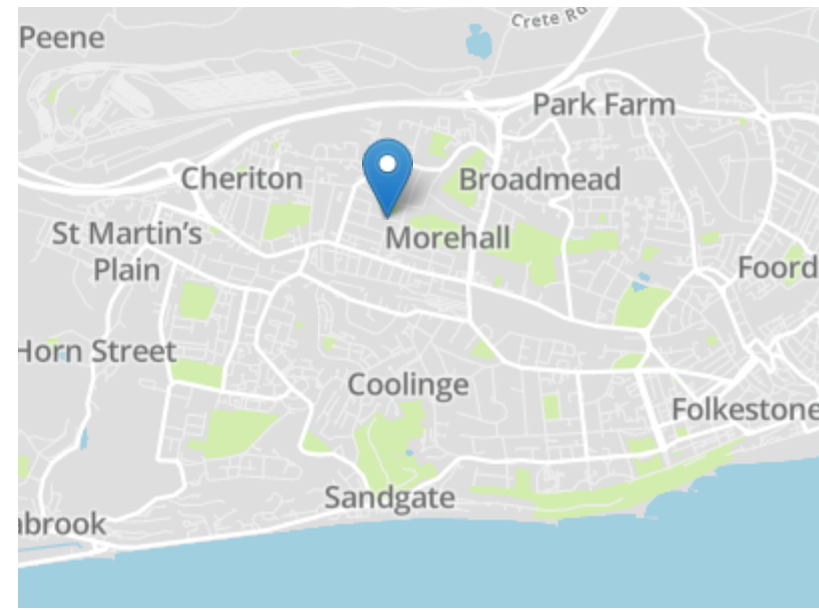


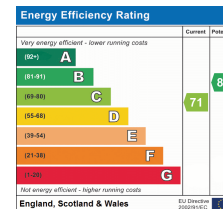
Illustration for identification purposes only. Measurements are approximate. Dimensions given are between the widest points. Not to scale. Outbuildings are not shown in actual location.



Need to book a viewing?

If you would like to book a viewing please contact our office on 01303 863393 or email sales@laingbennett.co.uk

See all our properties at



www.laingbennett.co.uk

The Estate Office
8 Station Road
Lyminge
Folkestone
Kent
CT18 8HP



These property details are intended to give a fair description and give guidance to prospective Purchaser/Tenant. They do not constitute an offer or contract of Sale/Tenancy and all measurements are approximate. While every care has been taken in the preparation of these details neither Laing Bennett Ltd nor the Vendor/ Landlord accept any liability for any statement contained herein. Laing Bennett Ltd has not tested any services, appliances, equipment or facilities, and nothing in these details should be deemed to be a statement that they are in good working order or that the property is in good structural condition or otherwise. We advise all applicants to commission the appropriate investigations before Exchange of Contracts/entering into a Tenancy Agreement. It should not be assumed that any contents/furnishing, furniture etc. photographed are included in the Sale/Tenancy, nor that the property remains as displayed in the photographs. No person in the employment of Laing Bennett Ltd has authority to make or give any representation or warranty whatever in relation to this property.