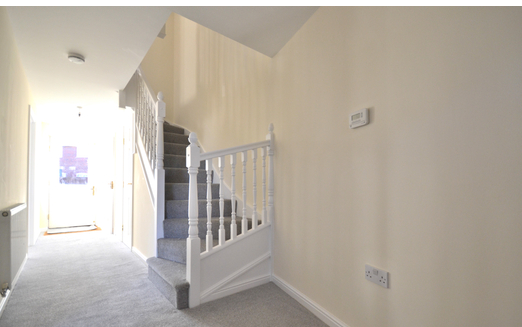




NEWSON & BUCK
ESTATE AGENTS



24 Deas Road, South Wootton, King's Lynn, Norfolk PE30 3PE

£285,000

No Onward Chain!!! Newson & Buck are proud to offer to the open market this four bedroom terraced home situated in the popular village of South Wootton. This spacious accommodation comprises of an entrance hallway, lounge, kitchen, downstairs w/c, four bedrooms with an en suit to the master and a family bathroom. Further benefits include an enclosed rear garden and a garage. Amenities can be found within walking distance as well as a regular bus service that will take you straight to the centre of King` Lynn which in itself has main line rail links to Cambridge and London. Viewing is highly recommended for this four bedroom family home.



01553 775151



Entrance Hallway

5' 0" x 24' 04" (1.52m x 7.42m) Fitted carpet, under stairs cupboard, one radiator.

Lounge

14' 05" x 14' 02" (4.39m x 4.32m) Fitted carpet, one radiator, one double glazed window.

Kitchen

14' 06" x 9' 07" (4.42m x 2.92m) Laminate flooring, fitted kitchen units, stainless steel sink, one radiator, one double glazed window, oven, gas hob with over head extractor, space for washing machine and fridge freezer.

W/C

7' 0" x 6' 07" (2.13m x 2.01m) Low flush w/c, pedestal sink, one radiator, one double glazed window.

Bedroom One

13' 11" x 21' 09" (4.24m x 6.63m) Fitted carpet, wardrobe space, two radiators, two double glazed windows.

En Suite

3' 06" x 11' 0" (1.07m x 3.35m) Laminate flooring, low flush w/c, pedestal sink, shower cubical, one radiator.

Bedroom Two

11' 09" x 12' 02" (3.58m x 3.71m) Fitted carpet, one double window, one radiator, wardrobe space.

Bedroom Three

14' 06" x 9' 09" (4.42m x 2.97m) Fitted carpet, one double window, one radiator, wardrobe space.

Bedroom Four

9' 02" x 8' 06" (2.79m x 2.59m) Fitted carpet, one double window, one radiator.

Bathroom

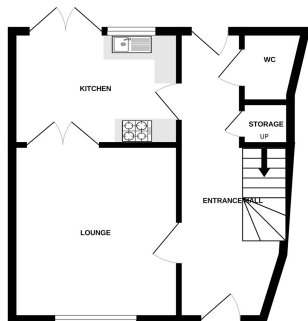
9' 07" x 6' 11" (2.92m x 2.11m) Vinyl flooring, bath tub, pedestal sink, low flush w/c, one radiator, one double glazed window.

EPC - TBC

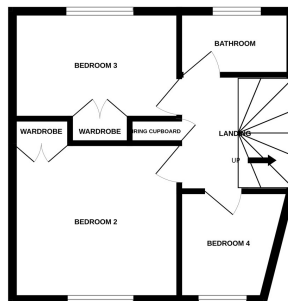
Council Tax Band - C



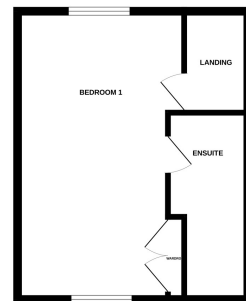
GROUND FLOOR



1ST FLOOR



2ND FLOOR



Whilst every attempt has been made to ensure the accuracy of the floorplan contained here, measurements of doors, windows, rooms and any other items are approximate and no responsibility is taken for any error, omission or mis-statement. This plan is for illustrative purposes only and should be used as such by any prospective purchaser. The services, systems and appliances shown have not been tested and no guarantee as to their operability or efficiency can be given.
Made with Metropix ©2024