



Flat 4, 14 Elm House, Mulberry Avenue, Staines- upon-Thames, Surrey, TW19 7SF

WELL PRESENTED AND SPACIOUS TWO BEDROOM, TWO BATHROOM APARTMENT IN SOUGHT AFTER DEVELOPMENT IDEALLY LOCATED FOR BOTH ASHFORD & STAINES TOWN CENTRES, LOCAL MOTORWAY NETWORKS & HEATHROW AIRPORT. The property benefits from a spacious lounge/diner, luxury fitted kitchen, two double bedrooms (en-suite to Bed 1), further luxury bathroom suite, allocated parking and a long lease. Viewings Highly Recommended!

ROOM DESCRIPTIONS

Communal Entrance

Entry-phone system, door to apartment.

Entrance Hall

Light and power points, radiator, entry-phone, cupboard housing hot water tank, wood-style laminate flooring.

Lounge/Diner



Front and side aspect UPVC double glazed window, light and power points, two radiators, wood-style flooring. Open to:

Kitchen



Rear aspect UPVC double glazed window, range of fitted units at eye and base level, roll edged worktops, 1 1/2 bowl sink drainer, built-in oven and hob with extractor over, integrated fridge/freezer, dishwasher and washing machine. Wall mounted boiler, tiled floor, downlighters.

Bedroom 1



Front aspect UPVC double glazed windows, light and power points, radiator, built-in wardrobes.

ROOM DESCRIPTIONS

En-suite Shower Room



Front aspect UPVC double glazed window, double-shower, pedestal wash hand basin, low level W.C, partly tiled walls, heated towel rail, downlighters, extractor.

Bedroom 2



Rear aspect UPVC double glazed window, light and power points, radiator.

Bathroom



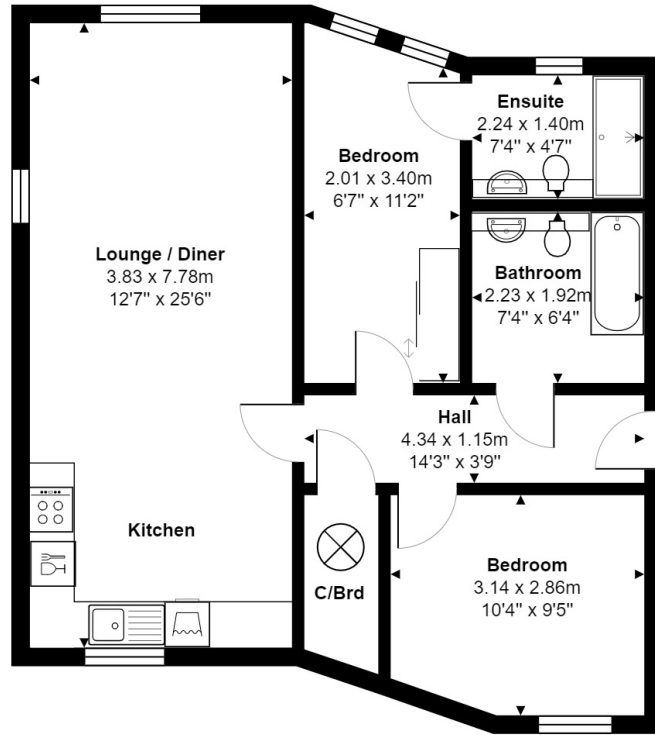
Panel enclosed bath, low level W.C, wash hand basin, partly tiled walls, tiled floor, heated towel rail, downlighters, extractor.

Outside

Communal Grounds & Parking

1 Allocated parking bay, communal bin storage and bike store.

FLOORPLAN



Ground Floor

Total Area: 64.5 m² ... 694 ft²

All measurements are approximate and for display purposes only.