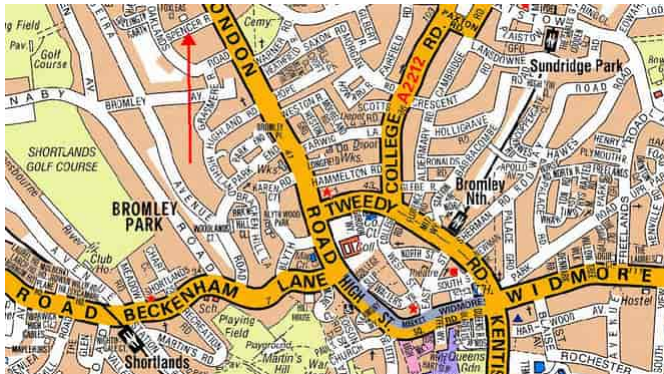




**Spencer Road,**  
Bromley, Kent. BR1 3SU

Tenure: Freehold

3 Bedrooms | 1 Reception Room | 2 Bathrooms



Set at the end of this small terrace of similar homes in this highly regarded road, within proximity of Bromley town centre, we are pleased to offer this delightful Berkley homes built, three bedroomed house. Having been in our opinion, meticulously maintained by our clients, this well presented home provides versatile and flexible accommodation as well as an integral garage with a utility area and 68' rear garden with a south easterly aspect. Close to stations, schools and shops, we highly recommend your earliest viewing. EPC Rating: D

Enquiries To:

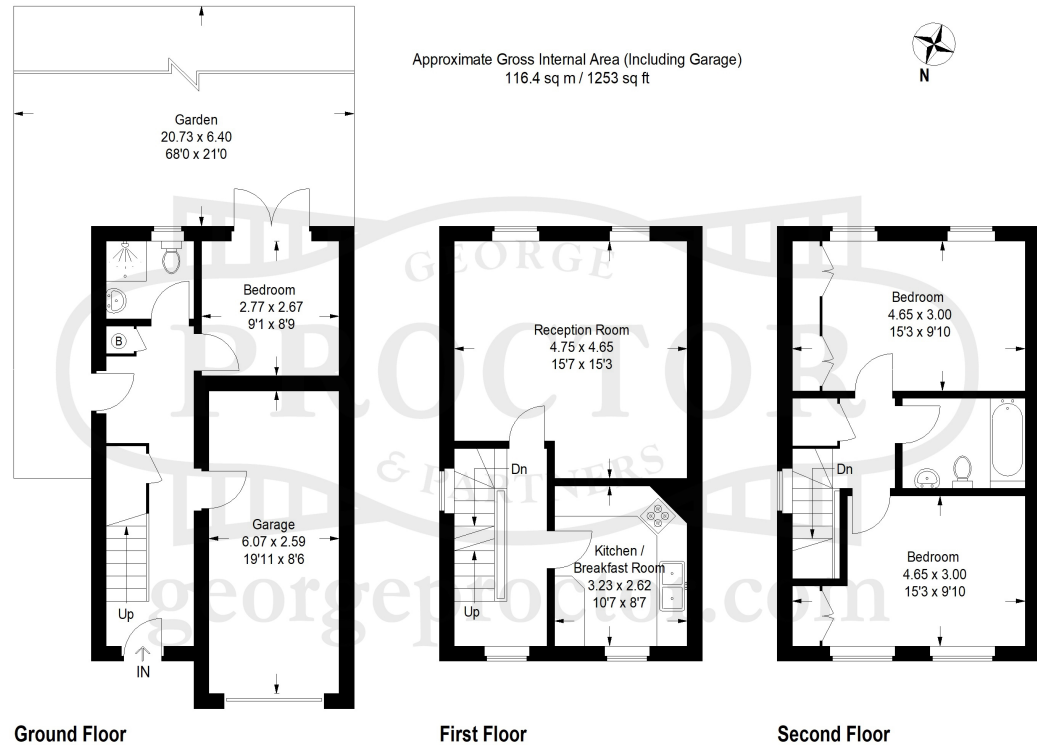
T: 020 8467 2252

E: [beosales@georgeproctor.com](mailto:beosales@georgeproctor.com)



The Bickley Estate Office

Southborough Road, Bickley, Kent, BR1 2EB



These particulars whilst believed to be accurate are made without responsibility on the part of the vendor or agents, their accuracy is not guaranteed nor do they form part of any contract and no warranty is given. Services or appliances have not been tested and no guarantee can be given as to their operation, buyers should seek professional advice where necessary. All measurements are approximate and may be rounded to the nearest three inches (10 cm). Floor plans, where shown, are indicative only. Any photographs included may be taken with the use of a wide angle lens. If there is a matter of particular interest please contact us for further information, especially before travelling any distance to view. Map reproduced by permission of Geographers A-Z Map Co Ltd. Licence No. A0514. This map is based upon Ordnance Survey maps with the permission of the controller of Her Majesty's Stationary Office.