

Greenings Court, Warrington, £95,000



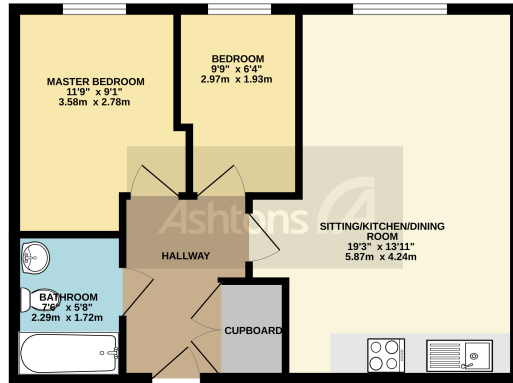
A good sized top floor apartment in the popular town centre location. There is also a fully fitted bathroom, storage cupboard and allocated off road parking space.



See more of this house at ashtons.net

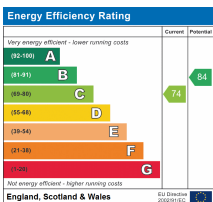


FOURTH FLOOR
503 sq.ft. (46.7 sq.m.) approx.



TOTAL FLOOR AREA: 503 sq.ft. (46.7 sq.m.) approx.
We have every effort to be made to ensure the accuracy of the figures contained here. Measurements of areas, volumes, soundings and other data are approximate and do not constitute a contract. The buyer should verify the accuracy of the figures and measurements before entering into any agreement. The services, systems and appliances shown have not been tested and no guarantee can be given regarding their condition or operation.

A good sized top floor apartment in the popular town centre location. This property is perfect to move straight into and offers two bedrooms, open plan lounge, kitchen and dining area with electric heating. There is also a fully fitted bathroom, storage cupboard and allocated off road parking space. Available with no onward chain.



www.ashtons.net



Fixtures and fittings: A list of the fitted carpets, curtains, light fittings and other items fixed to the property which are included in the sale (or may be available by separate negotiation) will be provided by the Seller's Solicitors. **Important Notice:** 1. Particulars: These particulars are not an offer or contract, nor part of one. You should not rely on statements by Ashtons in the particulars or by word of mouth or in writing ("information") as being factually accurate about the property, its condition or its value. Neither Ashtons nor any joint agent has any authority to make any representations about the property, and accordingly any information given is entirely without responsibility on the part of the agents, seller(s) or lessor(s). 2. Photos, Videos etc: The photographs, property videos and virtual viewings etc. show only certain parts of the property as they appeared at the time they were taken. Areas, measurements and distances given are approximate only. 3. Regulations etc: Any reference to alterations to, or use of, any part of the property does not mean that any necessary planning, building regulations or other consent has been obtained. A buyer or lessee must find out by inspection or in other ways that these matters have been properly dealt with and that all information is correct. 4. To find out how we process Personal Data, please refer to our Group Privacy Statement and other notices at <https://www.ashtons.net/privacy-policy/>