



Malvern Chase

01684 293246



47 Hawser Road, Malvern Chase, Tewkesbury, GL20 7FA

Built within the last 10 years and benefitting from some of the remaining NHBC Warranty, this modern detached home not only enjoys a glorious outlook and views, but a low energy rating of B, helping to ensure it is energy efficient and warm.

The accommodation briefly comprises of a welcoming hallway with the dual aspect lounge to the right. The lounge has large picture windows to the front which take full advantage of the far reaching views. Patio doors lead out to the rear garden. To the left of the hall there is a large triple aspect kitchen/dining room again taking advantage of the views, and creating a spacious and light room.

The kitchen is fitted with a range of modern wall and base units with an integrated gas hob, electric oven and extractor over.

An archway leads through to a useful utility room which also benefits from fitted base units and has space and plumbing for a washing machine. A door leads out to the rear garden.

Completing the accommodation on the ground floor is a useful wc.



On the first floor there are three double bedrooms and a family bathroom. The main bedroom has the advantage of an ensuite, and both bedroom 1 and 2 have full height windows to take full advantage of the views.

Outside the rear garden is a good size and has a wilding theme to encourage wildlife and insects. There is a useful garden shed and gated side access to the drive which provides ample off road parking.

The property has the benefit of gas central heating and upvc double glazing.

This is a Freehold property. A contribution is made to a Managing Agent for the upkeep, maintenance and drainage of the communal and shared areas of this small development including access roads. Currently this is £246.19 per year.

Located within easy walking distance of local convenience stores, primary school, the town centre and local bus links the wealth of excellent amenities within Tewkesbury are accessible.

Tewkesbury is a popular Tudor Abbey town with a wealth of leisure, health, and education facilities including hospital, theatre, swimming pool and sports centre all within easy walking distance of Mitton.

Centrally situated between Cheltenham, Worcester, Gloucester and Evesham it is an excellent commuting base, with Birmingham and other major cities made easy with the motorway and rail networks readily accessible.



Ground Floor

Lounge	19'4"x10'5"
Kitchen/Dining Room	19'4"x8'11"
Utility Room	5'8"x5'2"
Guest wc	

First Floor

Bedroom 1	13'(max)x9'10"
Ensuite	
Bedroom 2	11'5"x10'7"
Bedroom 3	7'10"x7'8"
Bathroom	8'7"x5'

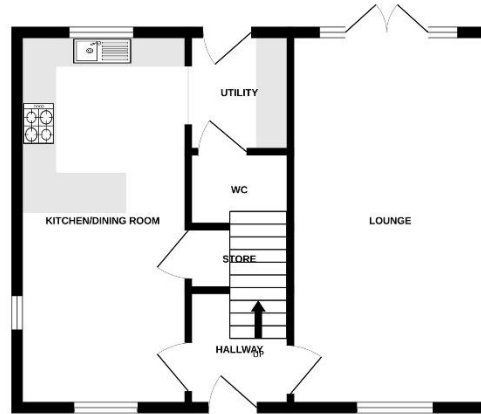
Outside

Rear Garden with gated side access
Garden Shed
Driveway Parking

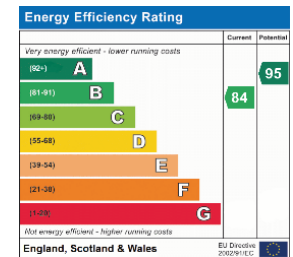
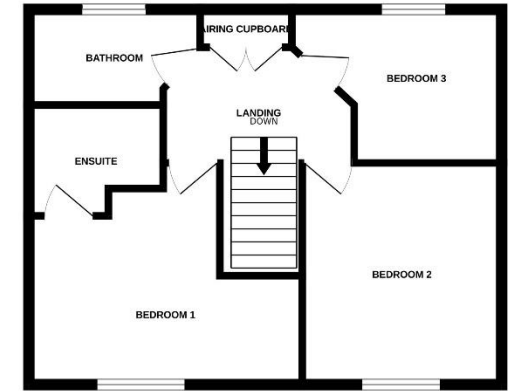
This is a Freehold property. A contribution is made to a Managing Agent for the upkeep, maintenance and drainage of the communal and shared areas of this small development including access roads. Currently this is £246.19 per year.

Tewkesbury Borough Council Tax Band D

GROUND FLOOR



1ST FLOOR



Guide Price £375,000 Freehold

Viewing strictly by arrangement with Engall Castle Ltd
155 High Street Tewkesbury Gloucestershire GL20 5JP
Office hours: Mon – Fri 9am to 6pm, Sat 9am to 4pm
email: sales@engallcastle.com

01684 293 246
www.engallcastle.com



This floorplan is provided for guidance only as an approximate layout of the property and should not be relied upon as a statement of fact.

Agents Note

These property details are set out as a general outline only and do not constitute any part of an Offer or Contract. Any services equipment, fittings or central heating systems have not been tested and no warranty is given or implied by Engall Castle Ltd that these are in working order. Buyers are advised to obtain verification from their solicitor or surveyor. Fixtures and fittings or other items are not included unless specifically described. All measurements, distances and areas are approximate and for guidance only and should not be relied upon for the purposes of fitting carpets or furniture etc. These property details and all statements within this document are provided without responsibility on behalf of Engall Castle Ltd or its employees or representatives and should not be relied on as statements of fact. Prospective purchasers must satisfy themselves as to the accuracy of all details pertaining to the property.



