

145a New Dover Road

CAPEL-LE-FERNE, Folkestone
CT18 7JR

£425,000 FREEHOLD

FOR SALE WITH BURNAP + ABEL... Nestled in the charming village of Capel Le Ferne, this stunning 4-bedroom detached bungalow on New Dover Road offers a peaceful retreat with modern amenities. The heart of the home is the open plan lounge/kitchen/diner, perfect for entertaining guests or relaxing with family. The kitchen features sleek countertops and top-of-the-line appliances, while the spacious living area boasts large bi-folding doors that flood the space with natural light. A separate utility room provides convenience and extra storage space. The four bedrooms provide plenty of space for family or guests. The bathroom is elegantly designed with luxurious finishes. Outside, you'll find an outbuilding that includes a convenient W.C., office space, and storage room - perfect for those who work from home or need additional space for hobbies. Parking is no issue with ample space available. Don't miss out on this rare opportunity to own a beautiful property in this sought-after location. Book your viewing today!



Entrance Hall

Lounge/Kitchen/Dining Room

22' 5" x 14' 8" (6.83m x 4.47m)

Utility Room

Bathroom

10' 7" x 5' 0" (3.23m x 1.52m)

Bedroom One

14' 2" x 9' 3" (4.32m x 2.82m)

Bedroom Two

19' 5" x 9' 10" (5.92m x 3.00m)

Bedroom Three

10' 8" x 9' 8" (3.25m x 2.95m)

Bedroom Four

10' 8" x 8' 9" (3.25m x 2.67m)

Off Road Parking

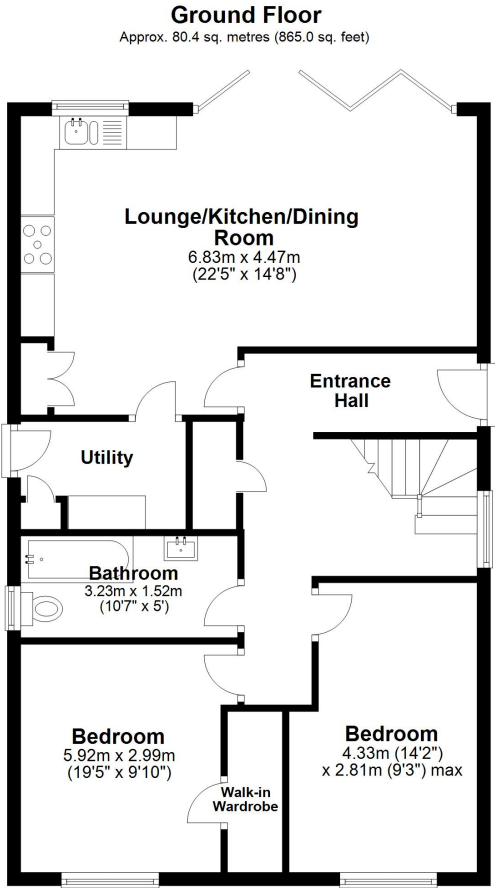
Outbuilding/Office

11' 5" x 8' 10" (3.48m x 2.69m)

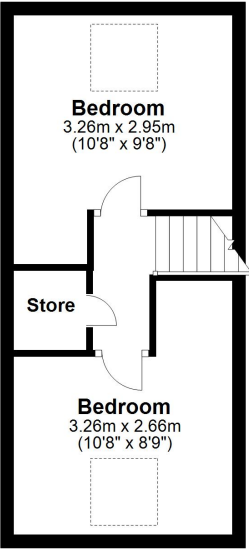
W.C

Outbuilding Store Room

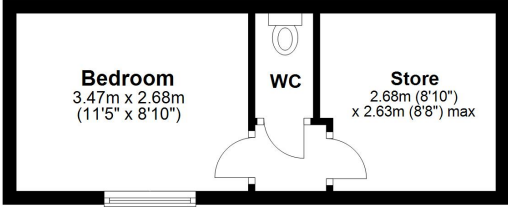
8' 10" x 8' 8" (2.69m x 2.64m)



First Floor
Approx. 25.3 sq. metres (272.6 sq. feet)



Annexe
Approx. 19.1 sq. metres (205.5 sq. feet)



Whilst every attempt has been made to ensure the accuracy of the floor plan contained here, measurements of doors, windows, rooms and any other items are approximate and no responsibility is taken for any error, omission or mis-statement. This plan is for illustrative purposes only and should be used as such by any prospective purchaser.
Plan produced using PlanUp.

