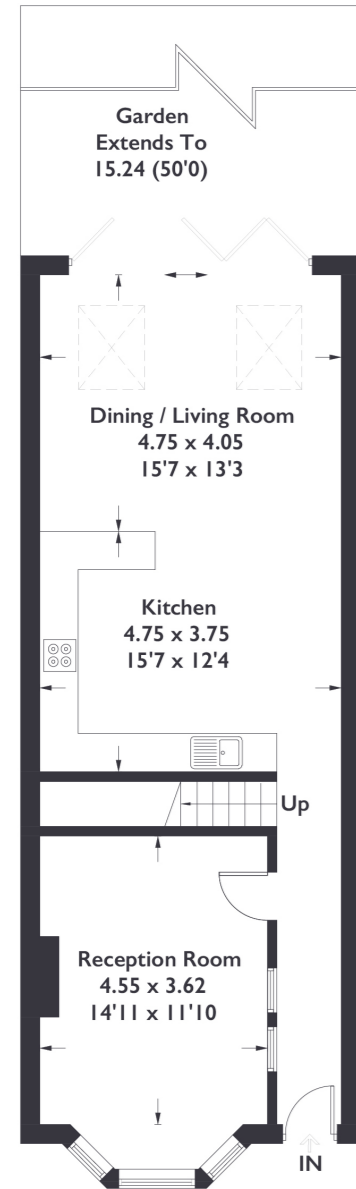
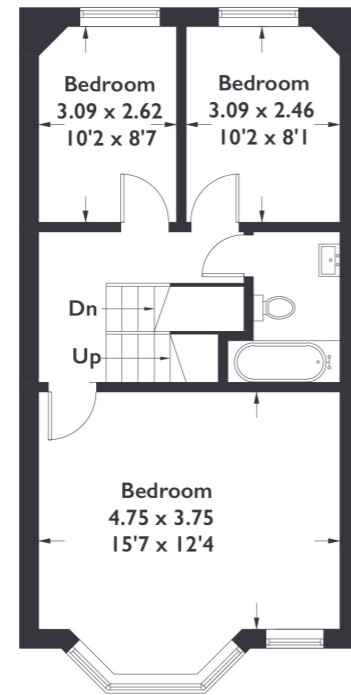


Graham Avenue, W13

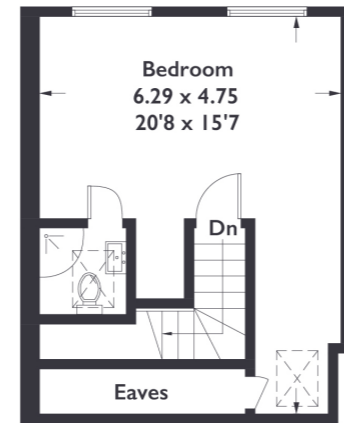
Approximate Gross Internal Area = 143.2 sq m / 1542 sq ft



Ground Floor



First Floor



Second Floor



4 BEDROOM HOUSE

Graham Avenue, W13

£995,000

This Edwardian end of terrace house just off of Northfield Avenue is generous in proportion and has a fabulous 50ft garden. With four bedrooms, two reception rooms and within walking distance of Fielding Primary School this home is perfect for a family.

FEATURES

- Four Bedroom
- Open Plan Living
- Circa 50ft Rear Garden
- Fielding Primary School
- Walpole & Lammas Park
- Chainfree
- EPC Rating E



4 BEDROOM HOUSE

Graham Avenue, W13

£995,000

Set in a quiet leafy road just off of Northfield Avenue, this Edwardian house is charming from the outside, and modern on the inside with impressive high ceilings.

This stunning modern end-of-terrace house, epitomising contemporary living at its finest. Upon entering, you are greeted by an expansive open plan kitchen and living space, seamlessly blending together to create a harmonious atmosphere for relaxation and entertaining. The abundant natural light floods through the sky lights and bi-folding doors, illuminating the room and offering picturesque views of the surroundings. Adjacent to this elegant space, a separate reception room provides an intimate setting for gatherings or as a quiet retreat. Spanning across the first and second floors, this residence boasts four spacious bedrooms, ensuring ample space for family and guests. Storage is never an issue here, as the house offers plentiful storage solutions throughout. With its modern design, thoughtful layout, and impressive features, this end-of-terrace house is an exquisite place to call home.

