



9 Whittle Court,
Knowlhill, Milton Keynes, MK5 8FT

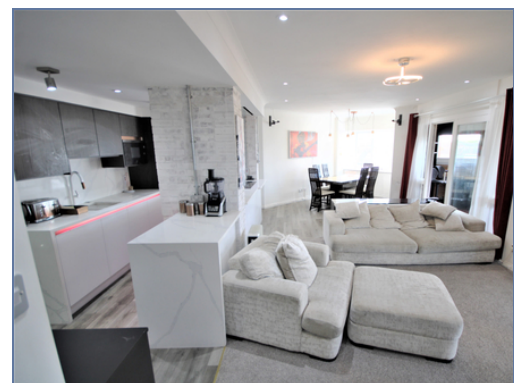
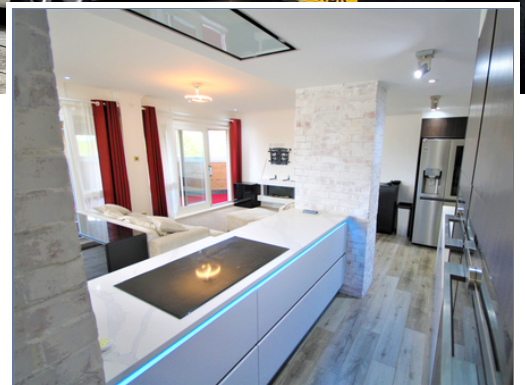
Tel: 01908 231 551 
mail@elevationstateagents.com



**866 North Row, Milton Keynes,
Buckinghamshire, MK9 3NS**

£375,000 Leasehold

- Luxury Penthouse apartment
- Central Milton Keynes
- Three bedrooms
- Open plan lounge /diner
- En-suite to master bedroom
- Single garage & off road parking
- Private residents garden
- £2000 per year- service charge
- 998 Years On Lease
- EPC- C
- Council Tax Band F

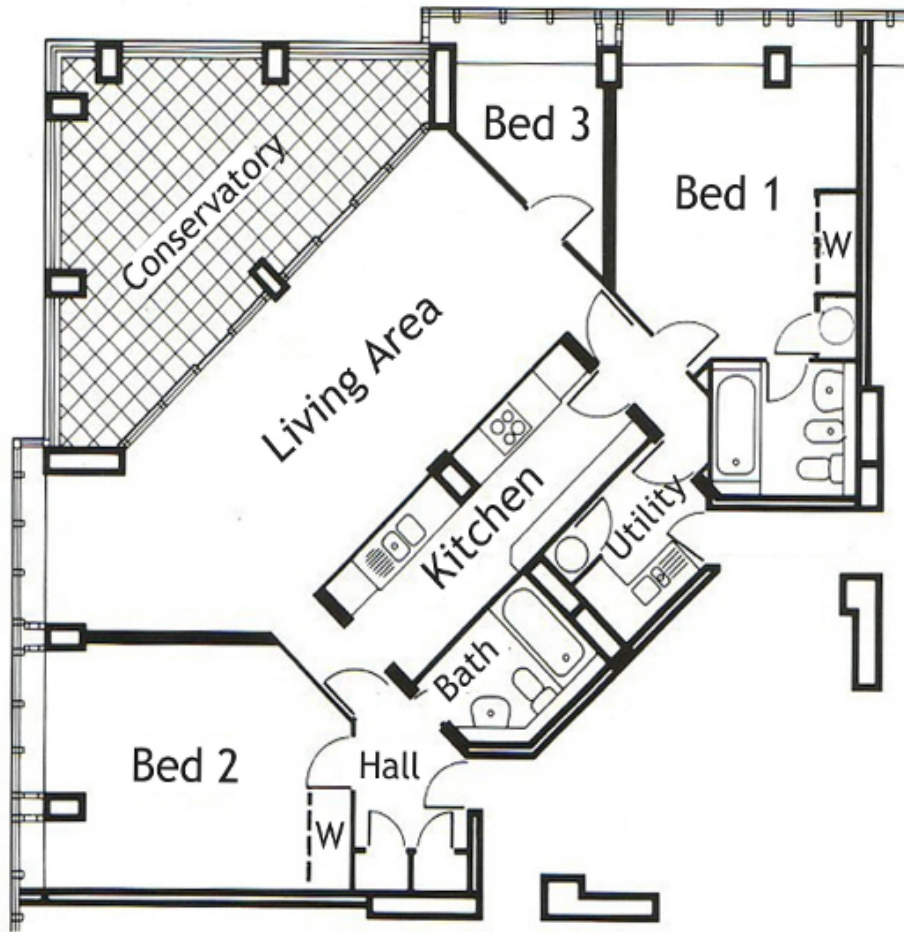


See our full selection of properties online at www.elevationstateagents.com



Disclaimer

Whilst we have endeavoured to prepare our sales particulars accurately none of the services, appliances or equipment have been tested. A buyer should satisfy themselves on such matters prior to purchase. Any measurements or distances mentioned in these particulars are for guide reference only. If such particulars are fundamental to a purchase, buyers should rely on their own enquiries. All enquiries should be directed to Elevation Estate Agents in the first instance.



Floor Plans are for layout purposes only.
Plan produced using PlanUp.



elevation
lettings | est. 1992