



GREGORY BROWN
RESIDENTIAL SALES & LETTINGS

£210,000 Share of Freehold
FOR SALE



16 Carlton Court, Gresham Road, Staines-upon-Thames, Surrey, TW18 2BL

SHARE OF FREEHOLD. A WELL PRESENTED AND SPACIOUS ONE BEDROOM APARTMENT WITH GARAGE, IN POPULAR PURPOSE BUILT DEVELOPMENT IDEALLY LOCATED WITHIN MOMENTS OF STAINES MAINLINE TRAIN STATION & TOWN CENTRE. The property benefits from a spacious lounge/diner, separate fitted kitchen, large double bedroom, bathroom, garage and a share of freehold. No Onward Chain. Viewings Highly Recommended!

Gregory Brown

127a, High Street, Staines-upon-Thames, TW18 4PD

01784 451458

staines@gregory-brown.co.uk

ROOM DESCRIPTIONS

Communal Entrance

With communal security-entry door, stairs to second floor.

Second Floor

Entrance Hall

Light and power points, heater, cupboard housing hot water tank, further cupboard, doors to:

Lounge/Diner

Rear aspect UPVC double glazed window, light and power points, TV point, heaters.



Kitchen

Front aspect UPVC double glazed window, range of fitted units at eye and base level, roll edged worktops, sink drainer unit, space for cooker, washing machine and fridge/freezer. Heater.



Bedroom 1

Rear aspect UPVC double glazed window, light and power points, heater.



Bathroom

Front aspect UPVC double glazed window, panel enclosed bath with shower over, low level W.C, pedestal wash hand basin, partly tiled walls, light, extractor.



Outside

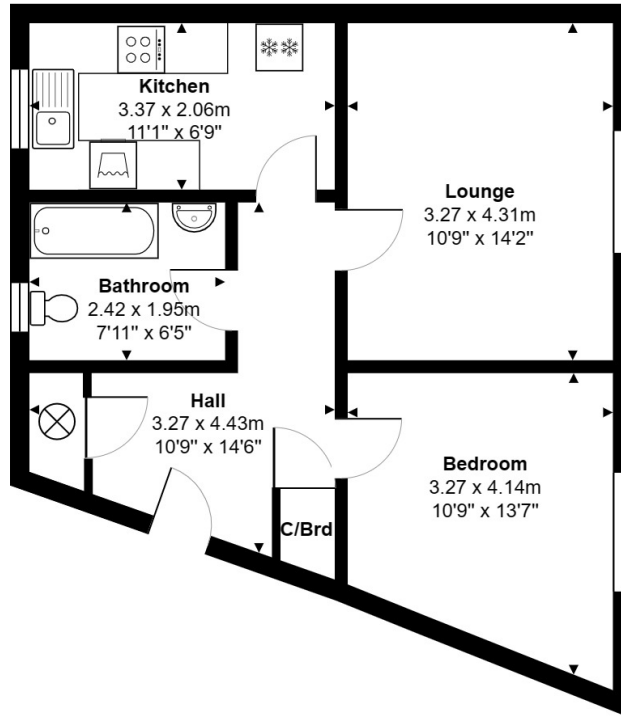
Communal Gardens, Residents Parking & Garages

Well maintained communal grounds, resident parking bays.

Garage

Situated in block to rear with metal up and over door.

FLOORPLAN



Total Area: 49.4 m² ... 532 ft²

All measurements are approximate and for display purposes only.