



Marlborough Close, Weston, Hitchin, Hertfordshire. SG4 7DN





1 Bedroom Terraced House £230,000 Freehold

A lovely example of a one-bedroom Freehold property set in this beautiful countryside location. The property boasts a generous lounge with a separate kitchen on the ground floor including a downstairs bathroom. On the first floor is a double bedroom with a large built in wardrobe space. Outside is a good size garden with a helpful storage cupboard to the front.

- Freehold
- One bedroom
- Double glazed
- Countryside location
- Good size garden
- EPC rating D. Council tax band C

Ground Floor:

Entrance:

Via double glazed door.

Lounge:

Abt. 13' 0" x 10' 0" (3.96m x 3.05m) Double glazed double doors leading to garden. Working fireplace.

Kitchen:

Abt. 8' 0" x 7' 0" (2.44m x 2.13m) Double glazed window to rear aspect. Range of base and wall units. Stainless steel sink and drainer. New style kitchen.

Bathroom:

Abt. 6' 0" x 7' 0" (1.83m x 2.13m) Suite comprising panelled bath, low level WC and wash hand basin. Frosted window to front aspect.

First Floor:

Bedroom One:

Abt. 16' 5" x 16' 5" (5.00m x 5.00m) Two double glazed windows to front and rear. Built-in wardrobe.

Outside:

Garden:

Small patio area and lawn.

Additional Information:

Agents Note:

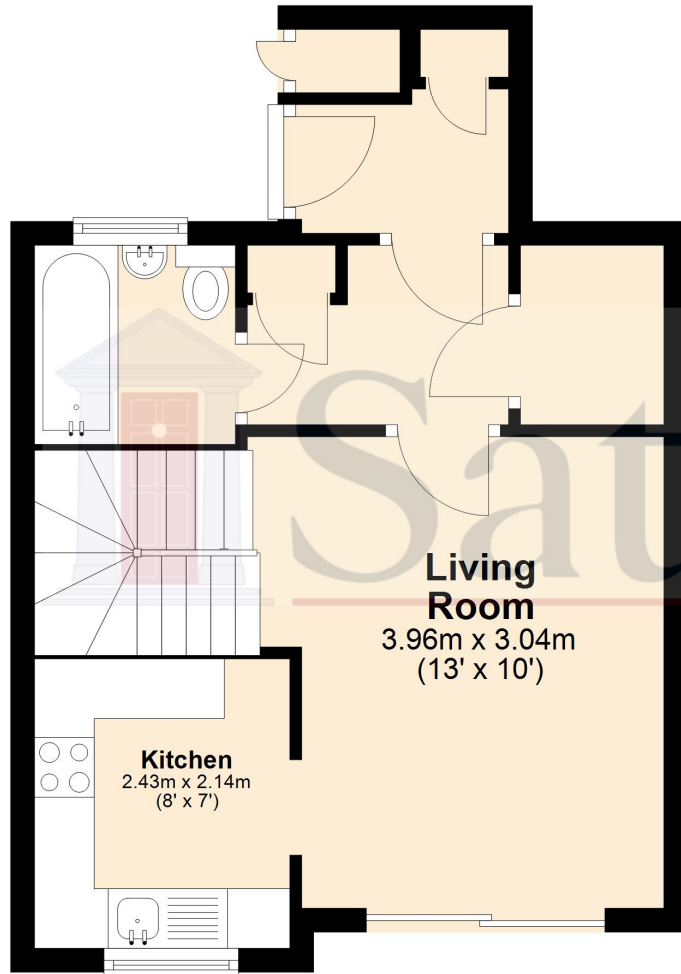
Draft details yet to be approved by the vendor and may be subject to change.



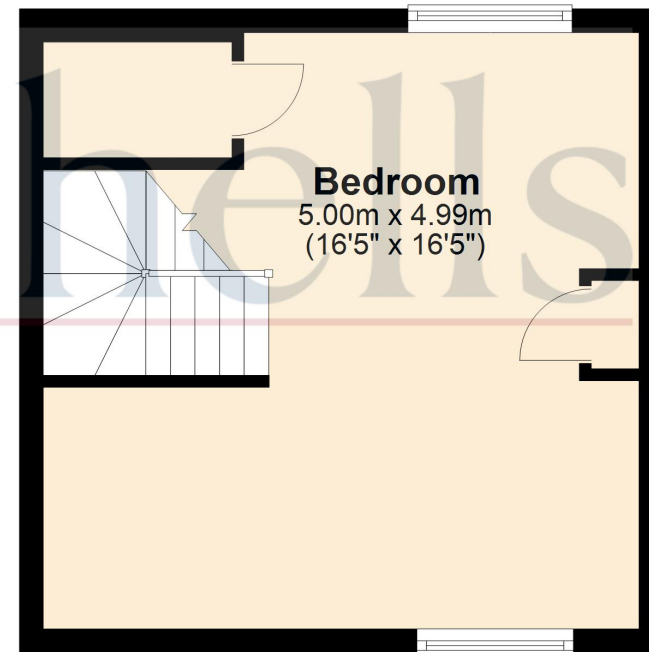
These particulars are a guide only and do not constitute an offer or a contract. The floor plan is for identification purposes only and not to scale. All measurements are approximate and should not be relied upon if ordering furniture, white goods and flooring etc. We have presented the property as we feel fairly describes it but before arranging a viewing or deciding to buy, should there be anything specific you would like to know about the property please enquire. Satchells have not tested any of the appliances or carried out any form of survey and advise you to carry out your own investigations on the state, condition, structure, services, title, tenure, and council tax band of the property. Some images may have been enhanced and the contents shown may not be included in the sale. Satchells routinely refer to 3rd party services for which we receive an income from their fee. If you would like us to refer you to one of these services please ask one of our staff who will pass your details on. We advise you check the availability of the property on the day of your viewing.



Ground Floor



First Floor



For illustrative purposes only - NOT TO SCALE - Measurements shown are approximate. The size and position of doors, windows, appliances and other features are approximate.
Plan produced using PlanUp.