



110 Mullway, Letchworth Garden City, Hertfordshire, SG6 4BH

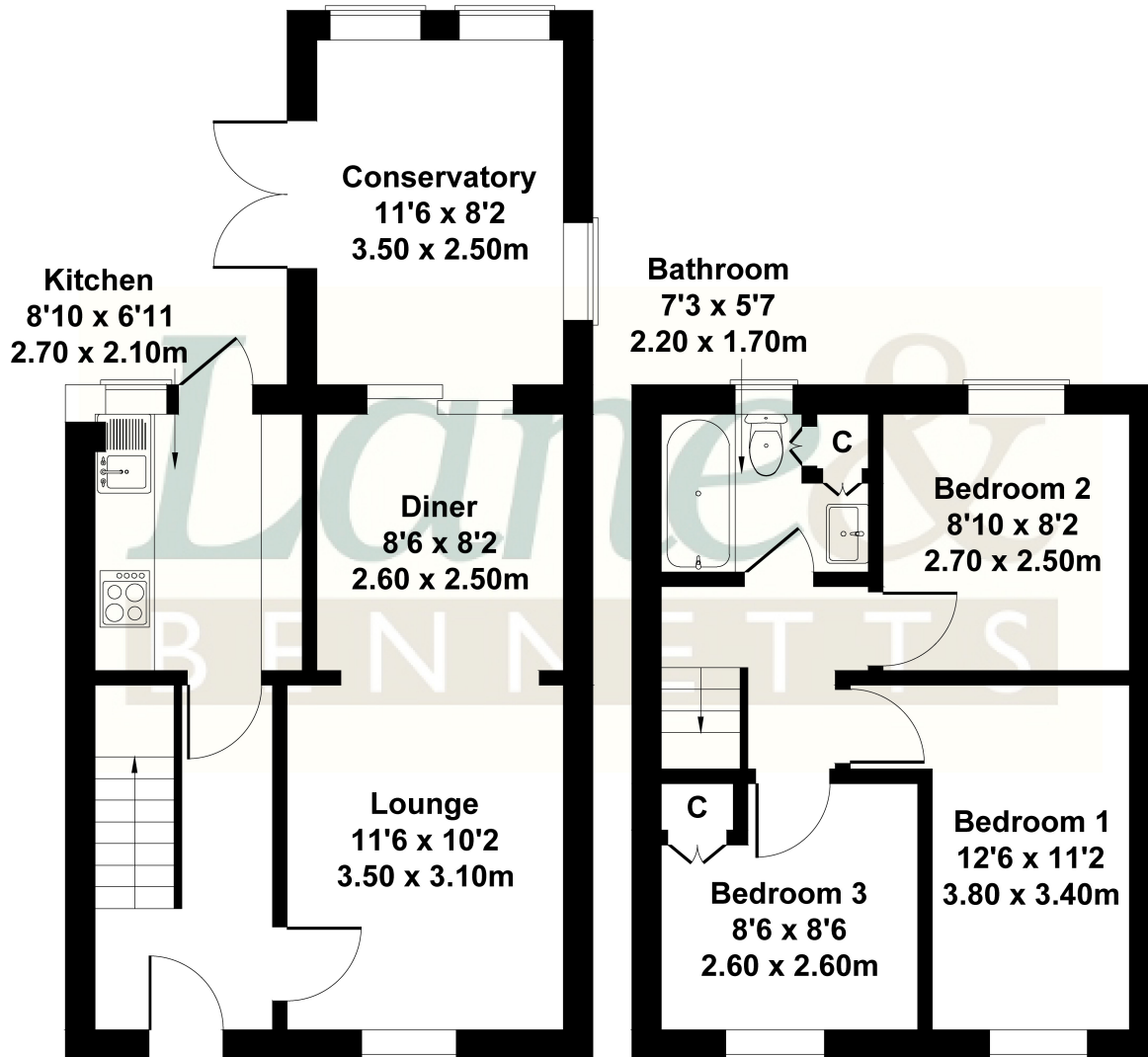
£335,000

Lane & Bennetts are delighted to bring to market this three bedroom, well proportioned family home in the popular Wilbury area. This home boasts a long and characterful garden, a delightful patio area and a conservatory to create additional downstairs living space. Letchworth train station and town are only a mile away from this home and it is in the catchment of 'Good' Ofsted rated schools.



110 Mullway

Approximate Gross Internal Area
743 sq ft - 69 sq m



GROUND FLOOR

FIRST FLOOR

Not to Scale. Produced by The Plan Portal 2023
For Illustrative Purposes Only.

- THREE BEDROOMS
- 100FT REAR GARDEN
- KITCHEN LEADING OUT TO PATIO AREA
- CONSERVATORY
- OFF-ROAD PARKING FOR TWO CARS
- LARGE SHED
- BATHROOM WITH SHOWER OVER
- CLOSE TO LETCHWORTH GREENWAY
- LOUNGE / DINER
- 1 MILE TO STATION & TOWN
- AGENTS NOTES: EPC: C | Tenure:
FLYING FREEHOLD | Council Tax Band: C

