

Truuli



Penshurst Road, Thornton Heath, Surrey, CR7 7EB

£400,000 Freehold

- Lovely terraced home
- Upstairs bathroom
- Generous through lounge
- Extended kitchen
- Ample storage
- Close to schools, transport and amenities
- No onward chain

Southbridge Place, Croydon, Surrey, CR0 4HA

Tel: 0330 043 0002

Email: save@truuli.co.uk Web: www.truuli.co.uk

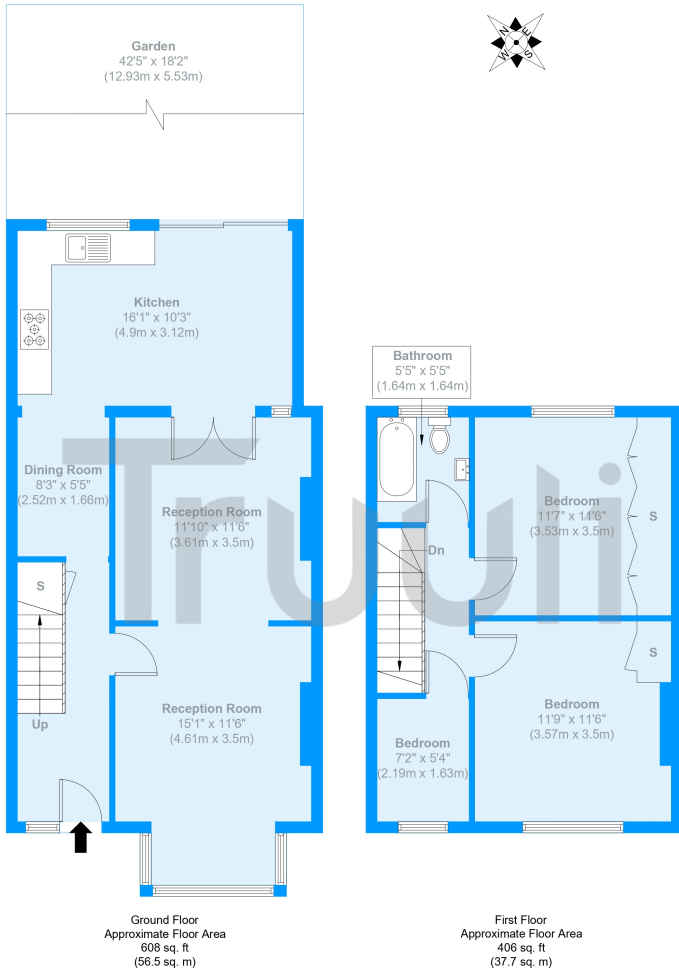
Penshurst Road, Thornton Heath, Surrey, CR7 7EB

£400,000 Freehold

Located on Penshurst Road, this charming three-bedroom terraced property provides spacious living accommodation and fantastic access to local amenities.

While some modernisation is required, it is perfectly placed for families and commuters, with free on-street parking and close proximity to transport links, schools and shops.

Penshurst Road



Approximate Gross Internal Area = 94.2 sq m / 1014 sq ft

The Floor plan is not to scale and measurements and areas shown are approximate and therefore should be used for illustrative purposes only. The plan has been prepared in accordance with the RICS code of Measuring Practice and whilst we have confidence in the information produced it must not be relied on. Maximum lengths and widths are represented on the floor plan. If there is any aspect of particular importance, you should carry out or commission your own inspection of the property.
Copyright © BleuPlan

Energy Efficiency Rating		Current	Potential
Very energy efficient - lower running costs			
(92+)	A		
(81-91)	B		
(69-80)	C	71	80
(55-68)	D		
(39-54)	E		
(21-38)	F		
(1-20)	G		
Not energy efficient - higher running costs			
England, Scotland & Wales		EU Directive 2002/91/EC	

