



## **Eaton House, 101 Chertsey Road, Ashford, Surrey, TW15**

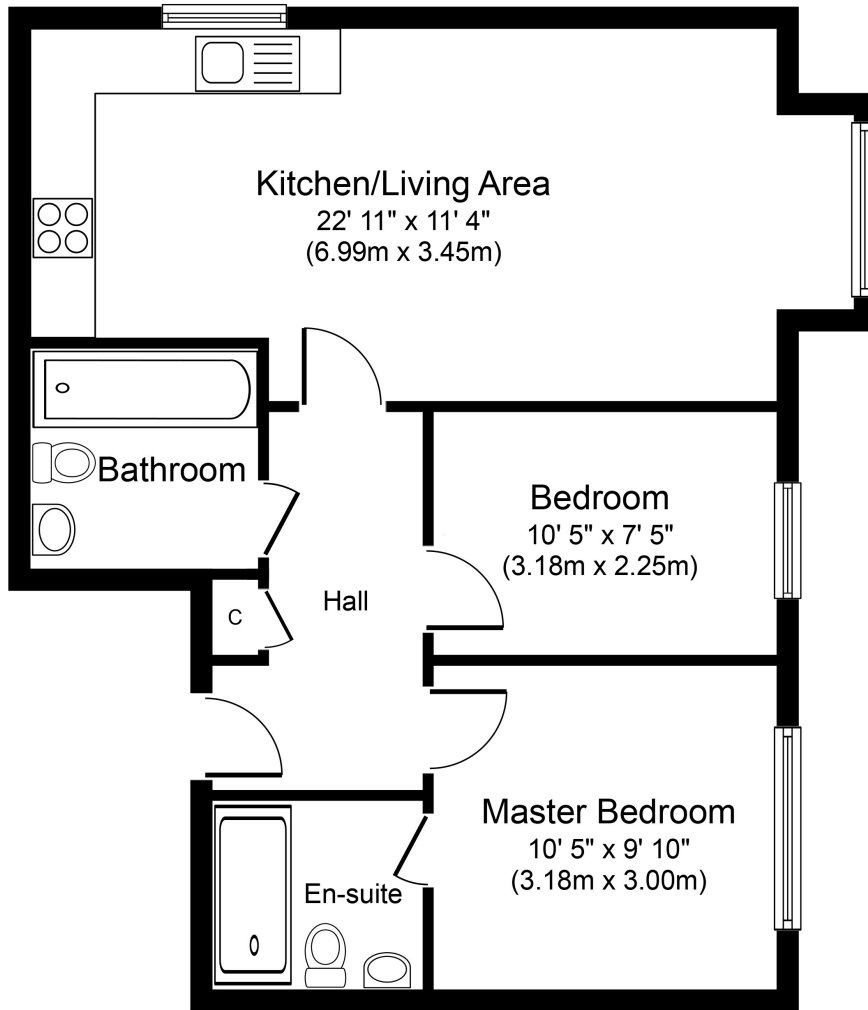
### **1SF**

VERY WELL PRESENTED TWO BEDROOM, TWO BATHROOM APARTMENT IN MODERN PURPOSE BUILT DEVELOPMENT IDEALLY LOCATED FOR TOWN CENTRE, MAINLINE TRAIN STATION & LOCAL MOTORWAY NETWORKS. The property benefits from a spacious lounge/diner, luxury fitted kitchen, two well-proportioned bedrooms (en-suite to Bedroom 1), further luxury bathroom suite, allocated parking & a long lease. Viewings Highly Recommended.

## ROOM DESCRIPTIONS

---

# FLOORPLAN & EPC



**Kitchen/Living Area**  
 22' 11" x 11' 4"  
 (6.99m x 3.45m)

**Bathroom**

Hall

**Bedroom**  
 10' 5" x 7' 5"  
 (3.18m x 2.25m)

**Master Bedroom**  
 10' 5" x 9' 10"  
 (3.18m x 3.00m)

**Ground Floor**  
 Approximate Floor Area  
 545 sq. ft.  
 (50.6 sq. m.)

Energy Efficiency Rating		Current	Potential
Very energy efficient - lower running costs			
(92+)	<b>A</b>		
(81-91)	<b>B</b>		
(69-80)	<b>C</b>	<b>82</b>	<b>82</b>
(55-68)	<b>D</b>		
(39-54)	<b>E</b>		
(21-38)	<b>F</b>		
(1-20)	<b>G</b>		
Not energy efficient - higher running costs			
<b>England, Scotland &amp; Wales</b>		EU Directive 2002/91/EC 