



## **Kingston Road, Staines-upon-Thames, Surrey, TW18 1PE**

VERY WELL PRESENTED & SPACIOUS EXTENDED THREE BEDROOM-SEMI DETACHED PROPERTY SITUATED ALONG THIS MUCH SOUGHT AFTER ROAD IDEALLY POSITIONED FOR EASY ACCESS TO STAINES TOWN CENTRE, MAINLINE TRAIN STATION, LOCAL SHOPS & SCHOOLS. The property benefits from a spacious lounge, luxury kitchen/diner/family room with separate utility room, downstairs W.C, office, three well proportioned bedrooms, modern white four-piece bathroom suite, extensive rear garden and off-street parking. Viewings Highly Recommended!

## ROOM DESCRIPTIONS

---

# FLOORPLAN



## 204 Kingston Road

Approximate Gross Internal Area = 124.0 sq m / 1335 sq ft

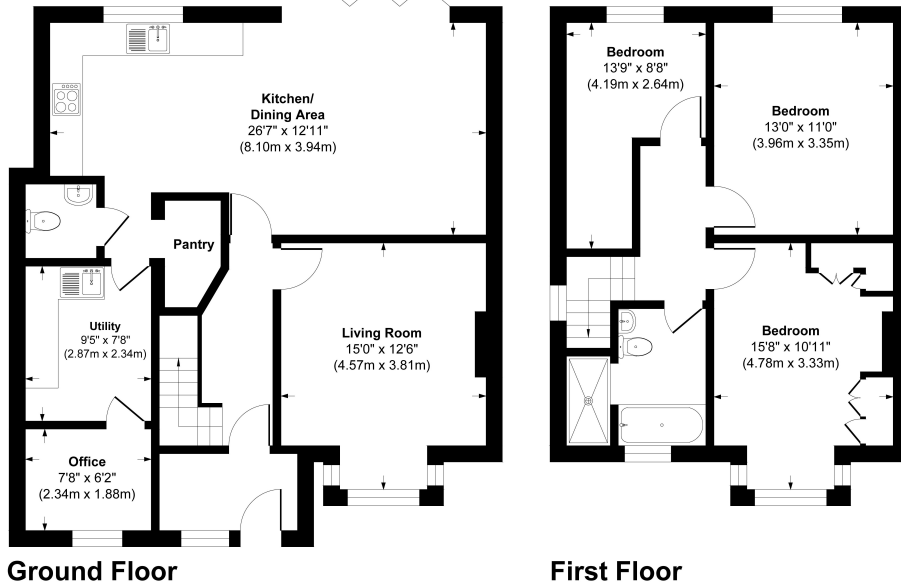


Illustration for identification purpose only, measurements approximate, and not to scale.