



GB



3 Ensign Way, Stanwell, Staines-upon-Thames, Surrey TW19 7RE
£449,950 - Freehold



PROPERTY DESCRIPTION

Beautifully Presented 2-Bedroom End of Terrace with Versatile Outbuildings.....Ideally located close to local shops on Clare Road and nearby schools, this superbly presented end-of-terrace home offers excellent living space inside and out. The accommodation includes a bright and spacious lounge/dining room with patio doors opening onto the garden, a modern fitted kitchen, two generous double bedrooms, and a family bathroom. To the rear, the garden features both decking and lawned areas, along with two versatile outbuildings. The larger building is currently arranged as a home office with kitchen and WC, offering potential as a guest suite, while a second smaller outbuilding provides a shower, basin, and WC. The property also benefits from off-road parking to the front and side access to the rear garden.

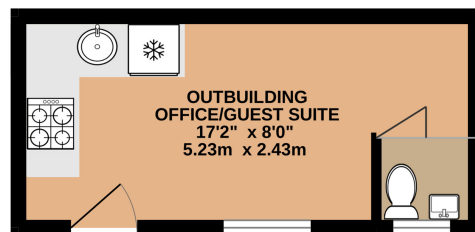
POINTS OF INTEREST

- Two Double bedroom end terrace house
- Large outbuilding with kitchen & WC
- Additional outbuilding with shower, basin & WC
- Rear garden with decking & lawn
- Off-road parking & side access
- Spacious lounge/dining room with garden access
- Modern, well-appointed kitchen
- Convenient for Clare Road shops & local schools



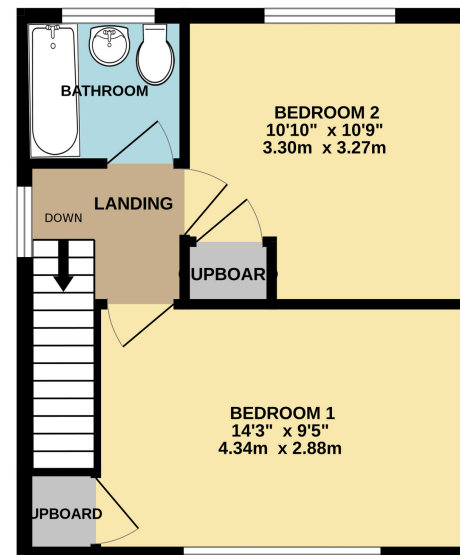
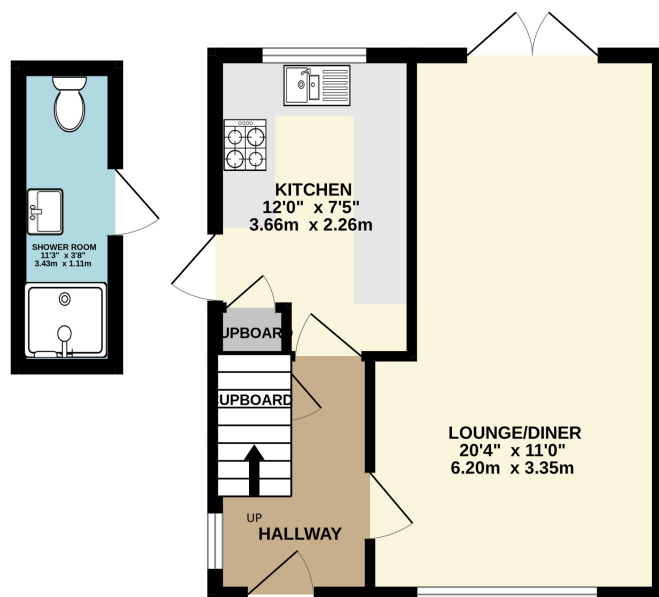
GROUND FLOOR

520 sq.ft. (48.3 sq.m.) approx.



1ST FLOOR

341 sq.ft. (31.7 sq.m.) approx.



TOTAL FLOOR AREA : 861 sq.ft. (80.0 sq.m.) approx.

Whilst every attempt has been made to ensure the accuracy of the floorplan contained here, measurements of doors, windows, rooms and any other items are approximate and no responsibility is taken for any error, omission or mis-statement. This plan is for illustrative purposes only and should be used as such by any prospective purchaser. The services, systems and appliances shown have not been tested and no guarantee as to their operability or efficiency can be given.

Made with Metropix ©2025

