



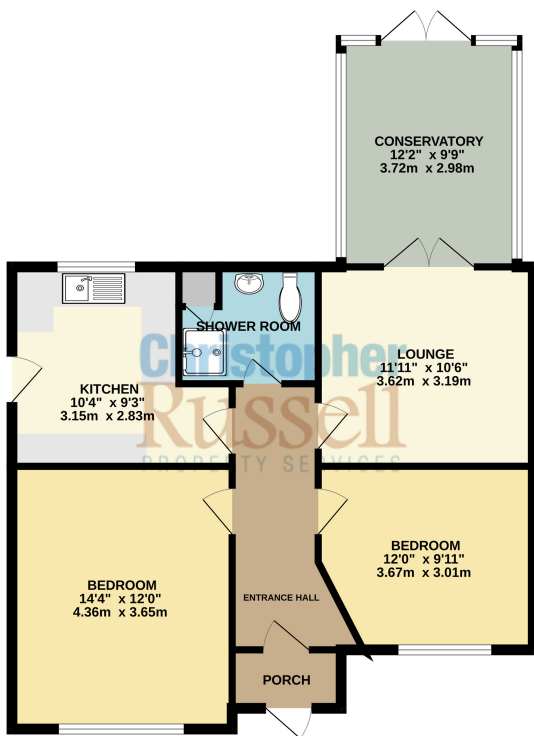
Westwood Lane, Welling, Kent,

£450,000

Council Tax Band - D  
Energy Efficiency Rating - D

**Christopher  
Russell**  
PROPERTY SERVICES

GROUND FLOOR  
790 sq.ft. (73.4 sq.m.) approx.



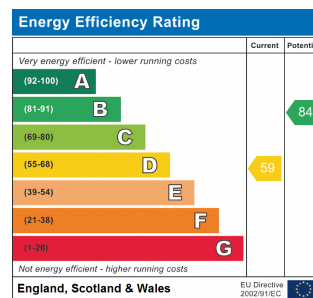
TOTAL FLOOR AREA: 790 sq.ft. (73.4 sq.m.) approx.  
Whilst every attempt has been made to ensure the accuracy of the floorplan contained here, measurements of doors, windows, rooms and any other items are approximate and no responsibility is taken for any error, omission or mis-statement. This plan is for illustrative purposes only and should be used as such by any prospective purchaser. The services, systems and appliances shown have not been tested and no guarantee as to their operability or efficiency can be given.  
Made with Metropix C2023

Two double bedroom semi detached bungalow offered with no onward chain.

Situated in convenient location for local transport and shopping facilities the property comprises, entrance hall, two double bedrooms, shower room, lounge with doors into a conservatory that overlooks the rear garden and a fitted kitchen.

Features include gas central heating, double glazed windows and off street parking for several cars. There is side access providing access to the rear garden that extends approximately 80ft which is laid mainly to lawn with a generous sized patio.

Council Tax Band D.



Viewing by appointment only

Christopher Russell | 33, The Oval | DA15 9ER

T: 020 8300 1234 | E: sales@christopher-russell.co.uk

www.christopher-russell.co.uk

**Christopher  
Russell**  
PROPERTY SERVICES