



CHI

33 COOMBE MEADOWS

CHILLINGTON

•

TQ7 2JL



33 COOMBE MEADOWS

GROUND FLOOR

Entrance Porch | Kitchen | Sitting/ Dining Room | Conservatory |
Bedroom 1 | Bedroom 2 | Shower Room

EXTERNAL

Garage | Driveway Parking | Front and Rear Garden



“A well presented 2 bedroom bungalow with garage and parking”...

33 Coombe Meadows is a well-presented two-bedroom home that has been recently redecorated both internally and externally, featuring new carpets throughout. Upon entering, the entrance porch leads into a welcoming hallway with convenient storage. The property benefits from a modern shower room and two well-proportioned bedrooms, both equipped with built-in storage.

- Newly Decorated
- Village Community
- Located On The Kingsbridge-Dartmouth Bus Route
- Low Maintenance Rear Garden
- Garage And Driveway Parking
- Walking Distance To Village Shop, Health Centre And Pub

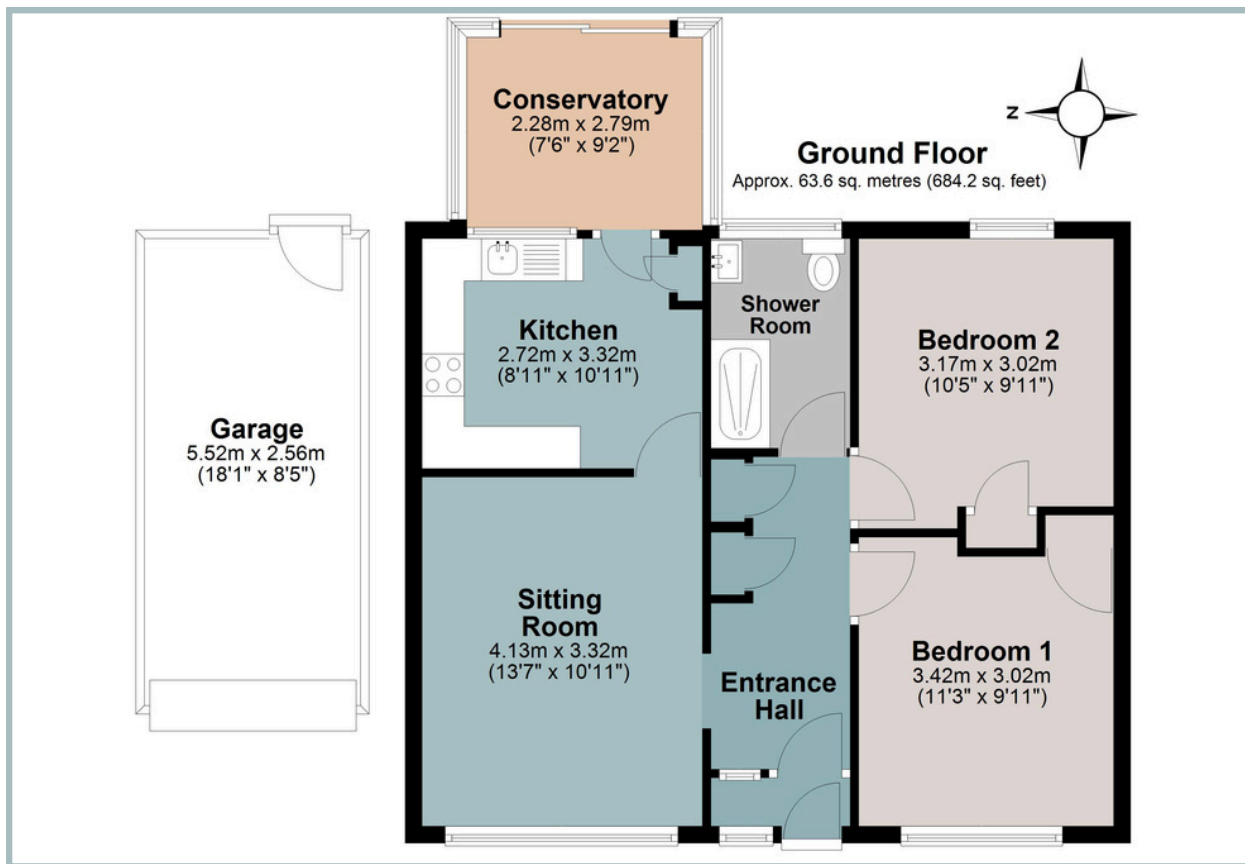
The spacious living/dining room provides a bright and airy space to relax, complete with an electric fireplace for added warmth and ambiance. The kitchen flows seamlessly into a bright conservatory, perfect for additional dining or a tranquil retreat.

Externally, the home has been further enhanced with new gutters and a professionally cleaned roof. The low-maintenance rear garden enjoys side access, while the front of the property features a landscaped garden with pathways leading to the driveway and a single garage with electric.

Ideal for a variety of buyers, this delightful home is move-in ready and conveniently located. Viewing is highly recommended.



TOTAL APPROXIMATE AREA: 63.6 SQ METRES 684.2 SQ FT



IMPORTANT NOTICE: We would like to inform prospective purchasers that these sales particulars have been prepared as a general guide only. They are prepared and issued in good faith and are intended to give a fair description of the property, but do not constitute part of an offer or contract. Any description or information given should not be relied on as a statement or representation of fact that the property or its services are in good condition. Neither Charles Head, nor any of its employees, has any authority to make or give any representation or warranty whatsoever in relation to the property. Floorplans are for guidance purposes only and may not be to scale. The photographs show only certain parts and aspects of the property at the time they were taken. Any reference to alterations to, or use of, any part of the property is not a statement that any regulations or other consent has been obtained. . If there are any important matters likely to affect your decision to buy, please contact us before viewing the property. ALL STATEMENTS CONTAINED IN THESE PARTICULARS AS TO THIS PROPERTY ARE MADE WITHOUT RESPONSIBILITY ON THE PART OF CHARLES HEAD.



113 FORE ST, KINGSBRIDGE TQ7 1BG
kingsbridge@charleshead.co.uk
01548 852 352
www.charleshead.co.uk

Tenure: Freehold

Council Tax Band: C

Local Authority: South Hams District Council

Services: Mains Electricity, Water And Drainage. Electric Heating.

EPC: Current E (54) Potential B (89)

Viewings: Very strictly by appointment only

Location: The pretty South Hams village of Chillington is only a short distance from the spectacular coastline of Torcross and Slapton Ley Nature Reserve, which lies south of the estuary town of Kingsbridge. Chillington itself offers a thriving community feel with an award winning Village Inn, post office with shop and a health centre with pharmacy. The nearby villages of Stokenham and West Charleton offer excellent primary schooling too. Nearby, Kingsbridge is located at the head of the estuary in the beautiful South Hams, an 'Area of Outstanding Natural Beauty', and provides a fantastic range of local and independent shops, restaurants, pubs, two supermarkets, a cinema, a leisure centre with swimming pool, medical centre, community hospital, schooling and churches all whilst retaining a small town feel with a strong community.

Directions: From Kingsbridge Quay take the A379 towards Dartmouth passing through the villages of West Charleton, East Charleton, and Frogmore. As you enter the village, the turning for Coombe Meadows will be on your left. Take the first right and and follow the road around. The property will be on your right.

What Three Words: ///consoles.gloom.habit

Kingsbridge 4.5 miles - Totnes 13.6 miles (Railway link to London Paddington) - Dartmouth 11.7 miles