

## Dacre Park, Blackheath Borders, London, SE13 5SW

£1,025 PCM

AVAILABLE NOW. A smart second floor furnished one bedroomed flat situated on the cusp of Blackheath. Offering a bright and modern interior with bundles of storage and briefly comprising spacious reception, separate kitchen, double bedroom and bathroom.

Viewing by appointment with 1st avenue.

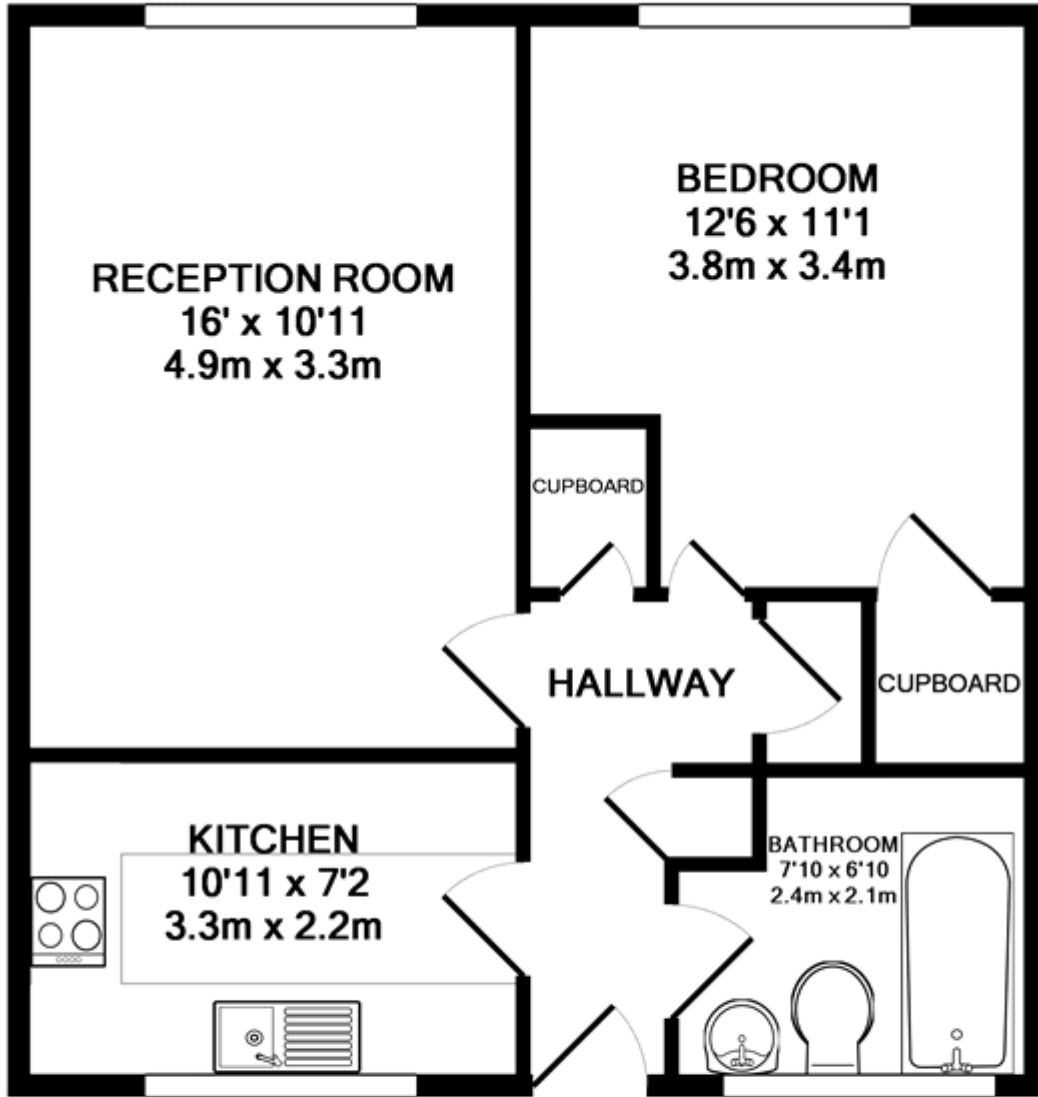
**Call: 020 8293 8600**

1st avenue, 128 Metcalfe Court, West Parkside, London SE10 0EL  
email: [info@1stavenue.co.uk](mailto:info@1stavenue.co.uk)

# Dacre Park, Blackheath Borders, London, SE13 5SW

£1,025 PCM

**1stavenue**  
Real Estate Services



TOTAL APPROX. FLOOR AREA 510 SQ.FT. (47.4 SQ.M.)

Whilst every attempt has been made to ensure the accuracy of the floor plan contained here, measurements of doors, windows, rooms and any other items are approximate and no responsibility is taken for any error, omission, or mis-statement. This plan is for illustrative purposes only and should be used as such by any prospective purchaser. The services, systems and appliances shown have not been tested and no guarantee as to their operability or efficiency can be given

Made with Metropix ©2015

Viewing by appointment with 1st avenue.

**Call: 020 8293 8600**

1st avenue, 128 Metcalfe Court, West Parkside, London SE10 0EL  
email: info@1stavenue.co.uk

**1stavenue**  
Real Estate Services