



Day & Co
ESTATE AGENTS

28 Cavendish Street

Keighley

BD21 3RG



30 Denholme Road, Oxenhope,
Keighley, West Yorkshire, BD22
9NP

£135,000

T: 01535 664609

W: www.dayandcoestateagents.co.uk

E: keighley@dayandcoestateagents.co.uk

- EPC Rating Is D
- Two Bedrooms
- Gas Central Heating & Double Glazing

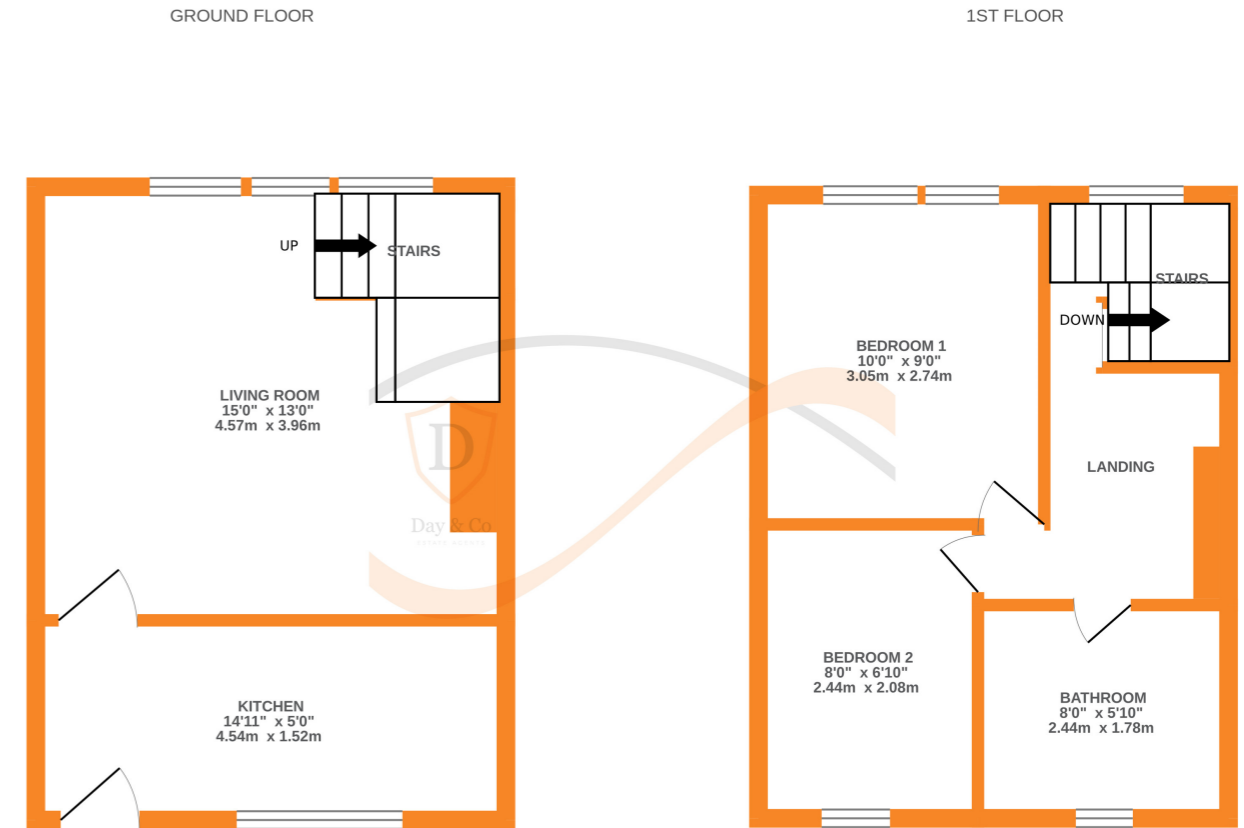
- Charming Through-By-Light Character Cottage
- Fabulous Character Features
- Sought After Village Of Oxenhope With Open Outlook To Front

SUMMARY

****A CHARMING 2 BEDROOM THROUGH-BY-LIGHT CHARACTER COTTAGE - SOUGHT AFTER VILLAGE LOCATION OF OXENHOPE!!**** Having fabulous character features, gas central heating, double glazing, front yard with artificial grass, open outlook to the front - OFFERED FOR SALE WITH NO ONWARD CHAIN!! EPC rating is D.

FULL DESCRIPTION

Viewing is essential to fully appreciate the wealth of charm on offer in this delightful through-by-light character cottage situated in the sought after village location of Oxenhope with open outlook to the front. The accommodation comprises of the kitchen having a range of base and wall mounted units, integrated oven, hob and extractor fan, double glazed window to the front enjoying open outlook. The lounge is a real feature of this property having a fabulous feature stone fireplace with inset gas coal effect fire, character ceiling beams, a radiator, double glazed window to the rear. A solid wood staircase leads to the first floor landing also having a stunning stone fireplace and double glazed window to the rear. There are two bedrooms on this level, the master having fitted wardrobes and cupboards. The bathroom completes the internal accommodation having a three piece suite comprising of a bath with shower over, WC, wash hand basin, double glazed window to the front. Externally there is an enclosed front yard with artificial grass. Offered for sale with no onward chain, EPC rating is D.



Whilst every attempt has been made to ensure the accuracy of the floorplan contained here, measurements of doors, windows, rooms and any other items are approximate and no responsibility is taken for any error, omission or mis-statement. This plan is for illustrative purposes only and should be used as such by any prospective purchaser. The services, systems and appliances shown have not been tested and no guarantee as to their operability or efficiency can be given.
Made with Metropix ©2023