

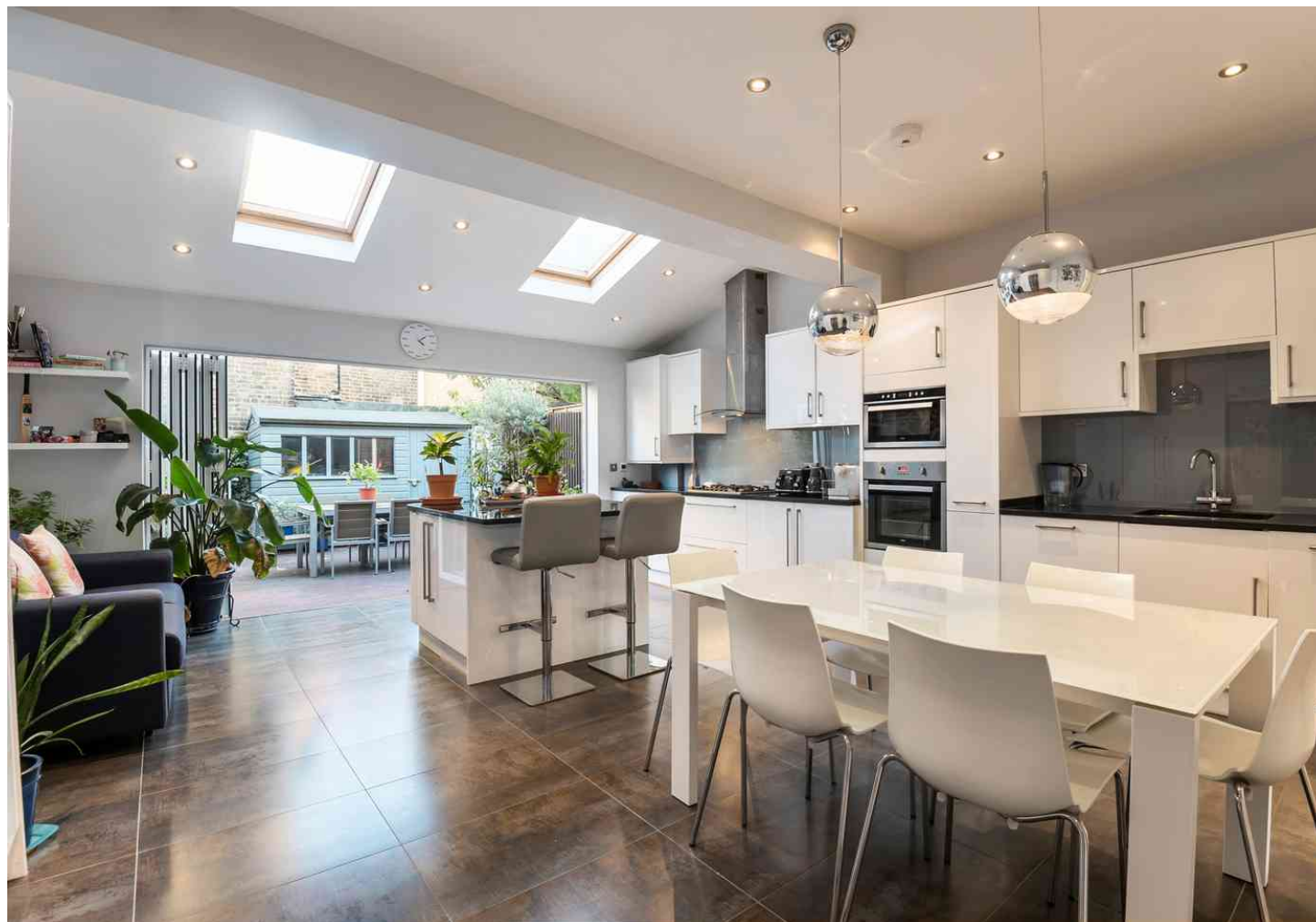
FOR SALE

Bradmore Park Road,,
Hammersmith, W6

Terraced House
Brackenbury Village

£1,500,000 fh

4  3  2 

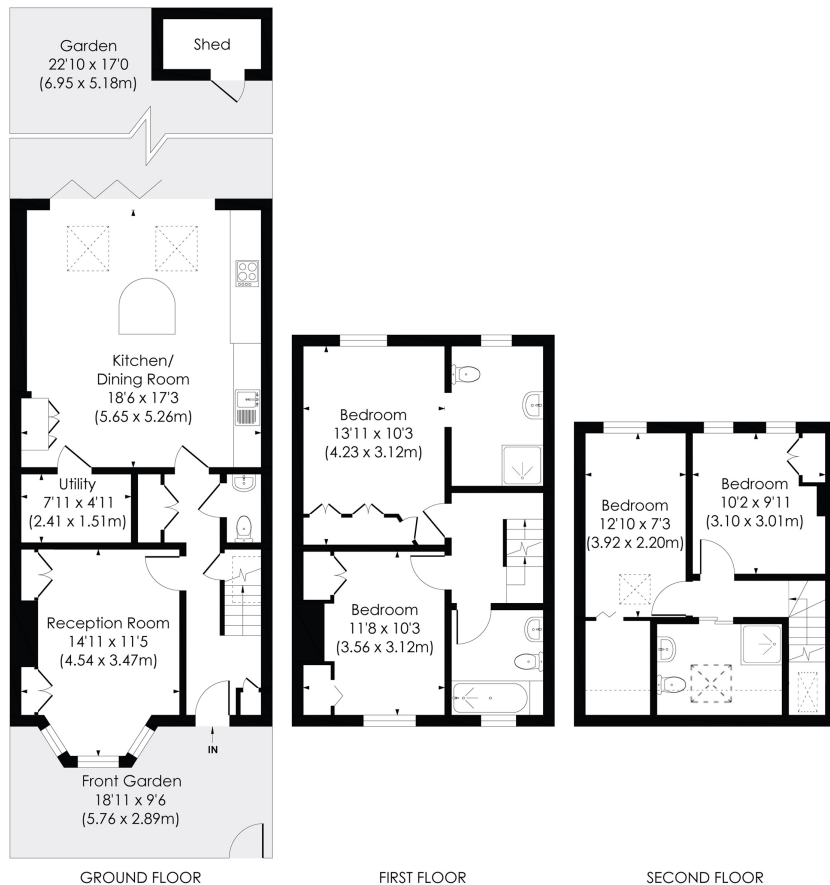


**horton
andgarton**

SALES / LETTINGS / PROPERTY MANAGEMENT

hortonandgarton.co.uk | Sales 020 8819 0510 | Lettings 020 8819 0511
172 King Street, Hammersmith, W6 0QU





BRADMORE PARK ROAD, W6

Approx. Gross Internal Floor Area
1442 Sq'/133.92 SqM (Including Reduced Height)
1406 Sq'/130.63 SqM (Excluding Reduced Height)

© Pixangle Property Marketing Ltd. info@pixangle.com Tel: 0208 870 2118

**horton
andgarton**

This floor plan has been prepared for the purpose of illustration only in accordance with the latest RICS code of measuring practice and is not to scale. All measurements and areas are approximate and whilst every effort has been made to ensure the accuracy of the plan contained here, no responsibility is taken for any error, omission or misstatement.



Victorian family house | 1442 Sq' - 133.92 SqM | Four bedrooms - Three bathrooms | Superbly finished throughout | EPC rating C | Brackenbury Village



hortonandgarton.co.uk
 Sales 020 8819 0510
 Lettings 020 8819 0511

172 King Street, Hammersmith, W6 0QU