

12 St Johns Road, Petts Wood, Orpington, Kent, BR5 1HX

Property Images

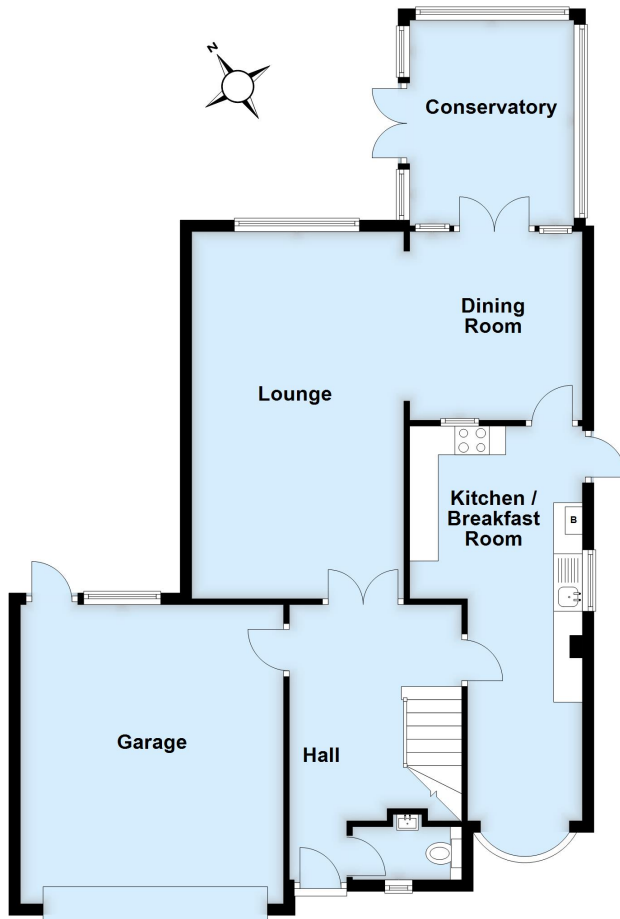






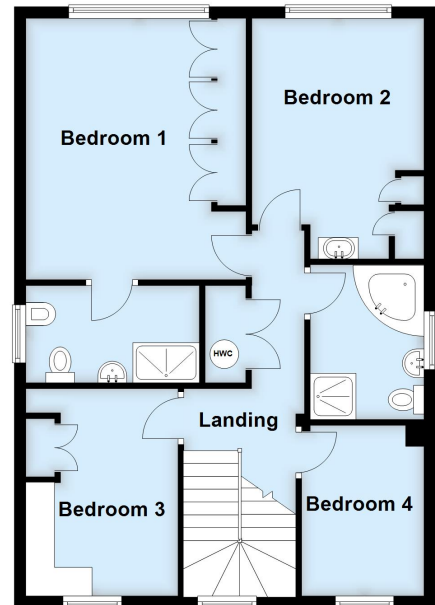
Ground Floor

Approx. 101.7 sq. metres (1094.5 sq. feet)



First Floor

Approx. 69.8 sq. metres (750.9 sq. feet)



Total area: approx. 171.4 sq. metres (1845.3 sq. feet)

This plan is for general layout guidance and may not be to scale.
Plan produced using PlanUp.