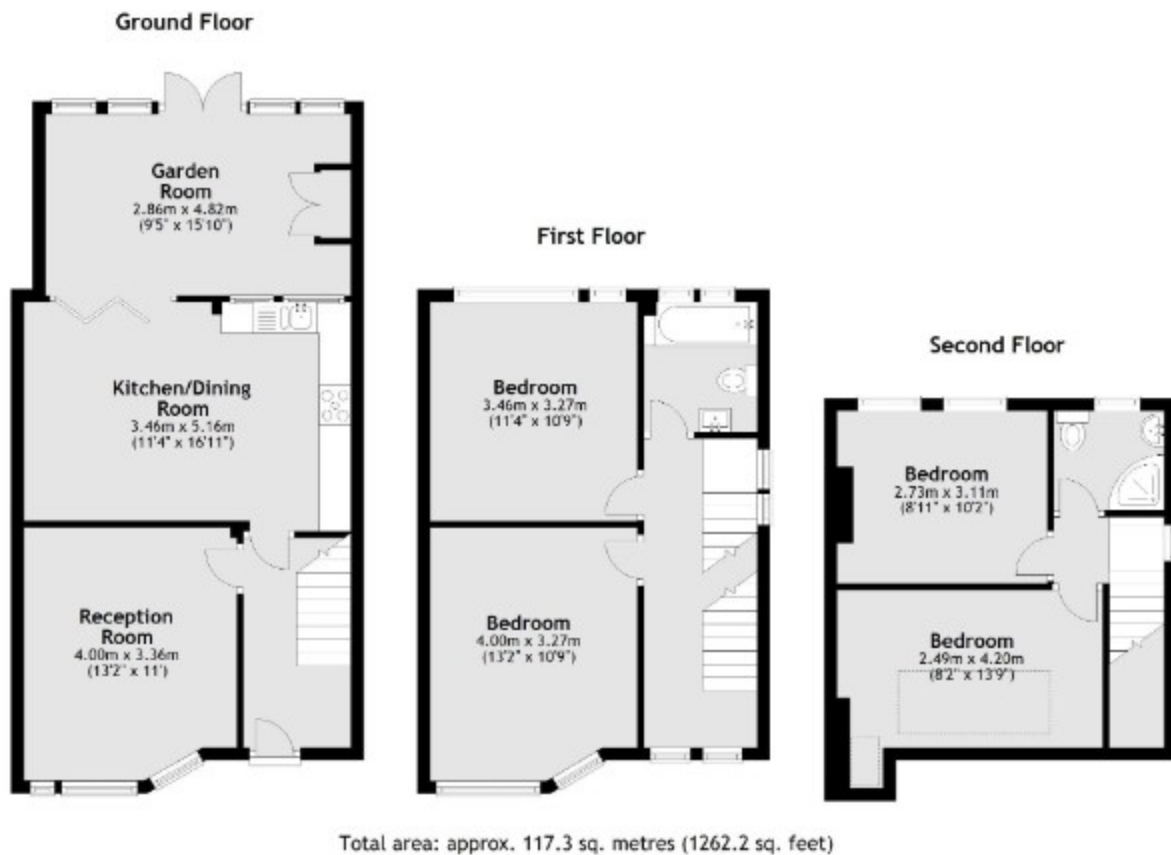


## **Beverley Road, Sunbury-on-Thames, TW16 6NG**

### **Guide Price £650,000**



- Ensuite To Master Bedroom
- Large Rear Garden
- Modern Kitchen Diner
- Study
- Integral Garage
- Off Street Parking
- Close To Schools & Shops
- Downstairs WC



Energy Efficiency Rating		
	Current	Potential
Very energy efficient - lower running costs		
(92+) <b>A</b>		
(81-91) <b>B</b>		
(69-80) <b>C</b>	72	83
(55-68) <b>D</b>		
(39-54) <b>E</b>		
(21-38) <b>F</b>		
(1-20) <b>G</b>		
Not energy efficient - higher running costs		
England, Scotland & Wales		
EU Directive 2002/91/EC		

We have not tested the services or domestic appliances so we cannot verify that they are in working order. The buyer is advised to obtain verification from their solicitor or surveyor. These particulars form no part of any offer or contract and their accuracy cannot be guaranteed.