

1 Downs Road

Folkestone
CT19 5PJ

£375,000 FREEHOLD

DRAFT DETAILS... FOR SALE WITH BURNAP + ABEL... Three bedroom semi detached house WITH PLANNING FOR A SINGLE STOREY EXTENSION in the popular residential area of Downs Road, Folkestone. Tucked into a corner plot is this well presented home. The property comprises an entrance porch which leads onto the entrance hall. Open onto the fitted kitchen to the rear with shaker style fitted base and wall units. Integrated cooker with hob and extractor fan, fridge/freezer, dishwasher and space for a washing machine. Brick tiled splashback and hard flooring. A door onto the rear garden. The dining room is a nice room with built in storage and French doors onto the garden. Double doors onto a cosy lounge, decorated neutrally with carpeted flooring.

Two good sized double bedrooms and a single bedroom with a family bathroom on the first floor.

Additional benefits include off road parking, gas central heating double glazed windows.

Call Burnap + Abel on 01303258590 to organise a viewing.

www.burnapandabel.co.uk



Entrance Hall

Lounge

13' 8" x 10' 11" (4.17m x 3.33m)

Dining Room

12' 3" x 10' 9" (3.73m x 3.28m)

Kitchen

13' 9" x 7' 3" (4.19m x 2.21m)

Bedroom

13' 3" x 12' 4" (4.04m x 3.76m)

Bedroom

11' 5" x 11' 0" (3.48m x 3.35m)

Bathroom

6' 0" x 5' 11" (1.83m x 1.80m)

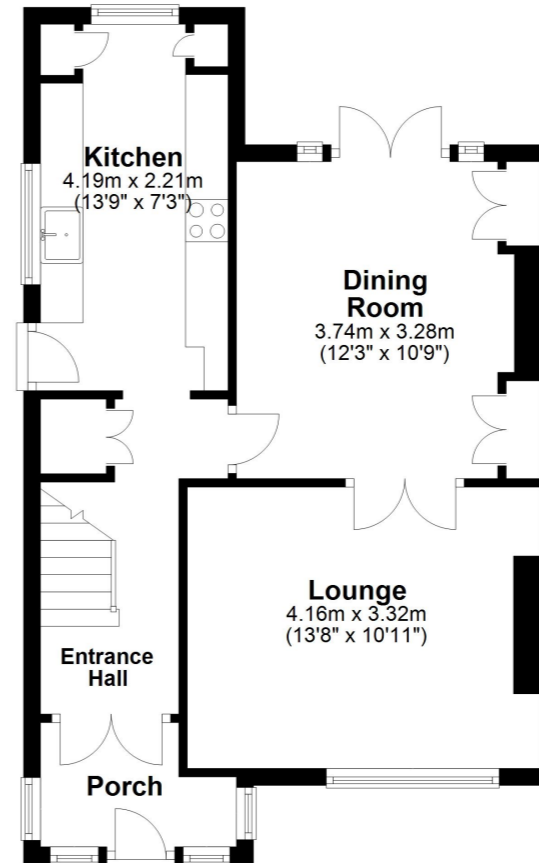
Bedroom

10' 5" x 7' 10" (3.17m x 2.39m)

Garden

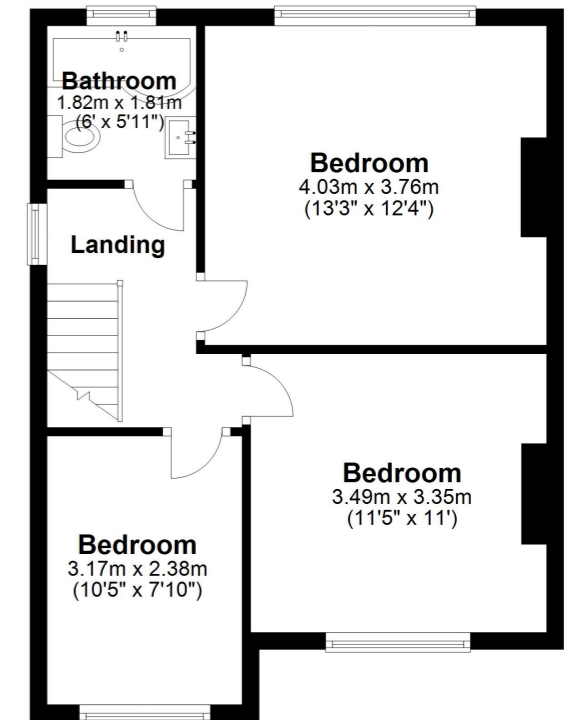
Ground Floor

Approx. 47.9 sq. metres (515.5 sq. feet)



First Floor

Approx. 44.7 sq. metres (480.8 sq. feet)



Whilst every attempt has been made to ensure the accuracy of the floor plan contained here, measurements of doors, windows, rooms and any other items are approximate and no responsibility is taken for any error, omission or mis-statement. This plan is for illustrative purposes only and should be used as such by any prospective purchaser.
Plan produced using PlanUp.

