



Orchard Close, Meppershall, Shefford, Bedfordshire. SG17 5LW





4 Bedroom Semi-Detached House £550,000 Freehold

This immaculately presented, four-bedroom semi-detached home has undergone a thoughtful makeover, ensuring a fresh and inviting atmosphere.

- Four double bedrooms
- Secluded rear garden
- Fully renovated throughout
- Modern features
- Utility room
- En-suite to master
- Freehold
- Awaiting EPC. Council tax band D



Ground Floor:

Front:

White gravel driveway for up to 3 vehicles leading to the partially glazed front door and wooden beam porch. External lighting.

Entrance:

Tiled flooring. Built-in storage cupboards on the wall and under stairs. Stairs to the first floor. Opening to rest of ground floor.

Kitchen/Diner:

Large Island. Bi-fold doors to rear. Selection of matching wall and base units. Tiled flooring. Integrated appliances including NEFF Induction hob, 'Slide and Hide' eye level double oven, dishwasher, Bosch tall fridge and separate freezer—integral bins. Quooker hot water boiling tap. Underfloor heating. Splashback. Sink with drainer. Space for dining table and snug area. Doors to downstairs WC, lounge and utility room—spotlights and pendants over island.

Lounge:

Fitted media units. Carpet. Double-glazed window to front. Space for inset TV. Spotlights.

Utility:

Space and plumbing for washing machine and tumble dryer. Tiled flooring. Door to the storage room. Radiator.

W/C:

Low-level dual flush WC. Wash basin and vanity unit. Door to half garage.

First Floor:

Landing:

Doors to bathroom and all bedrooms. Loft access.

Bedroom One:

Double-glazed window to rear. Carpet. Radiator. Door to the dressing room.

Dressing Room:

Selection of fitted wardrobes and drawers. Velux window. Door to en-suite.

En-Suite:

Low-level dual flush WC. Wash basin with storage vanity unit. Freestanding bath with central mixer taps. Freestanding walk-in shower with glass screen. Double-glazed frosted window to front.

Bedroom Two:

Carpet. Double-glazed window to rear. Fitted wardrobes. Radiator.

Bedroom Three:

Carpet. Double-glazed window to front. Fitted wardrobes and vanity unit. Radiator.

Bedroom Four:

Carpet. Double-glazed window to front. Radiator.

Bathroom:

Paneled bath. Separate shower. Low-level WC. Wash basin. Frosted window to rear. Tiled flooring.

Additional Information:

Agents Note:

Draft details yet to be approved by the vendor and may be subject to change.

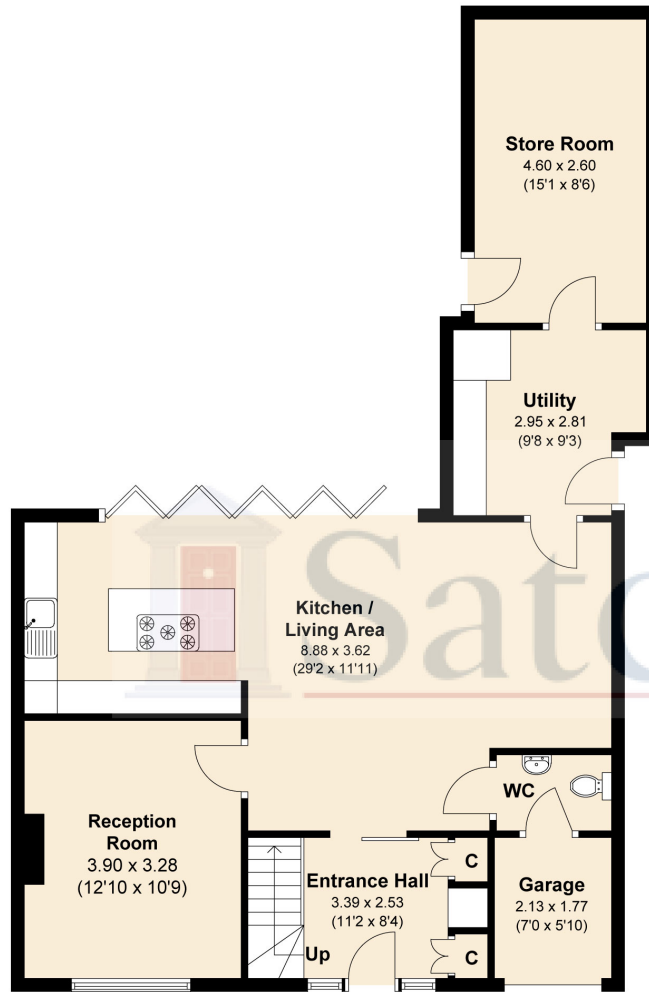




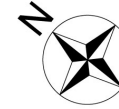
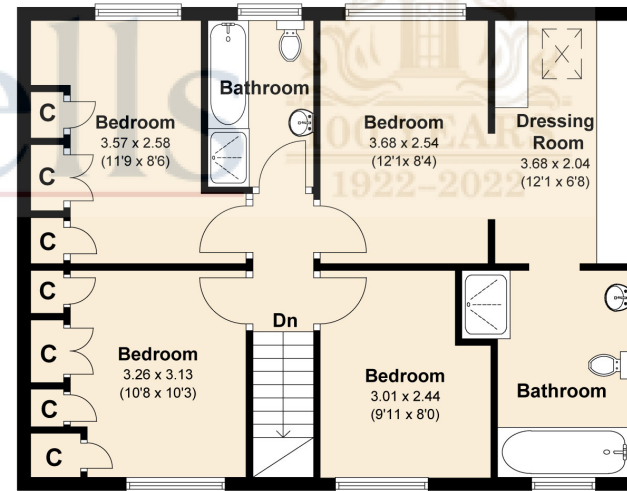
These particulars are a guide only and do not constitute an offer or a contract. The floor plan is for identification purposes only and not to scale. All measurements are approximate and should not be relied upon if ordering furniture, white goods and flooring etc. We have presented the property as we feel fairly describes it but before arranging a viewing or deciding to buy, should there be anything specific you would like to know about the property please enquire. Satchells have not tested any of the appliances or carried out any form of survey and advise you to carry out your own investigations on the state, condition, structure, services, title, tenure, and council tax band of the property. Some images may have been enhanced and the contents shown may not be included in the sale. Satchells routinely refer to 3rd party services for which we receive an income from their fee. If you would like us to refer you to one of these services please ask one of our staff who will pass your details on. We advise you check the availability of the property on the day of your viewing.



Ground Floor



First Floor



Total area: approx. 143.90 sq. metres (1548.92 sq. feet)

For illustrative purposes only - NOT TO SCALE - Measurements shown are approximate.

The size and position of doors, windows, appliances and other features are approximate.