



East Close, Hitchin, Hertfordshire. SG4





3 Bedroom Semi-Detached House

£1,650 pcm

Additional charges may apply

A superb THREE bedroom semi-detached family home which sits on a generous plot in a quiet secluded cul-de-sac. This property offers spacious, modern and versatile accommodation over two floors. The ground floor is graced by a superb 17ft kitchen/diner with integrated appliances, a large lounge and downstairs cloakroom. On the first floor there are TWO double bedrooms with wardrobes, a single bedroom and a modern three piece bathroom suite. This super family home is further complimented by a large rear garden and a block paved driveway offering parking for several cars. Available early September! View ASAP to avoid disappointment!

- THREE bedrooms
- Semi-detached house on a generous plot
- 17ft kitchen / diner
- Good size front facing lounge
- Large driveway
- Good size enclosed rear garden
- Quiet cul-de-sac location
- Available early September
- No pets allowed
- EPC Rating C

A superb THREE bedroom semi-detached family home which sits on a generous plot in a quiet secluded cul-de-sac. This property offers spacious, modern and versatile accommodation over two floors. The ground floor is graced by a superb 17ft kitchen/diner with integrated appliances, a large lounge and downstairs cloakroom. On the first floor there are TWO double bedrooms with wardrobes, a single bedroom and a modern three piece bathroom suite. This super family home is further complimented by a large rear garden and a block paved driveway offering parking for several cars. Available early September! View ASAP to avoid disappointment!

Council Tax Band - C

A security deposit is payable at the time of your offer being accepted by the landlord/s. This is equivalent to one weeks rent and for this property is £379.72. This does then form part of your five week holding deposit meaning once all satisfactory references are passed you will then be required to pay £1,518.90. For more information please contact the office.

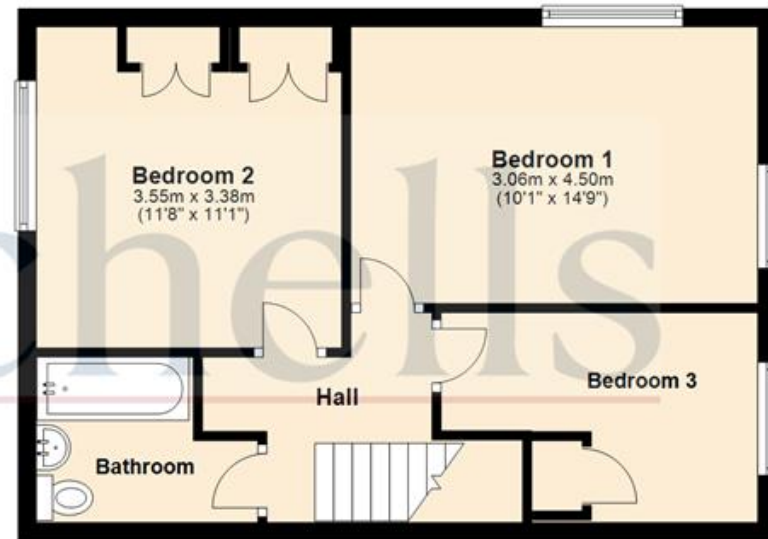


These particulars are a guide only and do not constitute an offer or a contract. The floor plan is for identification purposes only and not to scale. All measurements are approximate and should not be relied upon if ordering furniture, white goods and flooring etc. We have presented the property as we feel fairly describes it but before arranging a viewing or deciding to let, should there be anything specific you would like to know about the property please enquire. Satchells have not tested any of the appliances or carried out any form of survey and advise you to carry out your own investigations on the state, condition, structure, services, title, tenure, and council tax band of the property or the tenancy terms. Some images may have been enhanced and the contents shown may not be included in the letting. Satchells routinely refer to 3rd party services for which we receive an income from their fee. If you would like us to refer you to one of these services please ask one of our staff who will pass your details on. We advise you check the availability of the property on the day of your viewing.

Ground Floor



First Floor



For illustrative purposes only - NOT TO SCALE - Measurements shown are approximate. The size and position of doors, windows, appliances and other features are approximate.
Plan produced using PlanUp.