

Coopers Drive, Roundswell, BARNSTAPLE  
£700 pcm

John  
**Smale & Co.**

Chartered Surveyors | Residential & Commercial Consultants



- Modern Semi-Detached House
- Garage and Off Road Parking
- Kitchen/Diner
- No Pets

- Two Bedrooms
- Enclosed Rear Garden
- Long Term Let
- Available November 2020

# 8 Coopers Drive, Roundswell, BARNSTAPLE, Devon, EX31 3SH

This is a semi-detached 2 bedroom house, situated within the popular location of Roundswell. It benefits from a garage, off road parking for one car and a good sized enclosed garden to the rear. The accommodation comprises; kitchen/diner, lounge, two double bedrooms and bathroom. The property benefits from gas fired central heating system. Available on a long term basis. Available from 1st November. Rent £750cm. Deposit. £860.

## Lounge

4.26m (Max) x 3.56m (14' x 11' 8")

## Kitchen/Diner

4.26m x 2.86m (14' x 9' 5")

## First Floor

### Landing

### Bathroom

White suite comprising of bath with newly fitted shower over, W/C, pedestal hand basin.

### Bedroom One

3.57m x 3.42m (11' 9" x 11' 3")

### Bedroom Two

2.89m x 2.29m (9' 6" x 7' 6")

### Outside

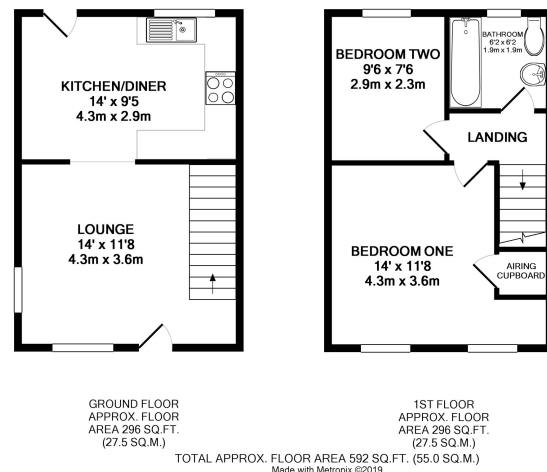
Single garage to the front of property with driveway parking for one car. To the rear is a good sized enclosed rear garden, laid to lawn and with side gate access.

### Services

Mains connected. Gas. Electric and Water.  
Council Tax Band. B.

## Directions

Travelling down the A3125 from the Cedars roundabout, turn right at the first roundabout. Travelling along the Old Bideford Road, Coopers Drive is the second turning on your right. The property can be found on your right hand side, with To Let board displayed.



At John Smale & Co we don't just sell houses! ...

Contact us now for information on all of our other services including Residential and Commercial Lettings, Property Management, Commercial Property Sales, Probate Valuations, Independent Financial Advice, Energy Performance Certificates, Auctions and New Homes.

These particulars have been prepared for guidance only. We have not carried out a detailed survey, not tested the services, appliances or specific fittings. Floor plans are not drawn to scale unless stated, measurements and distances are approximate only. Do not rely on them for carpets and furnishings. Photographs are not necessarily current and you should not assume that contents shown are included in the sale.