

FOR
SALE



The Cottage, Burghill, Hereford HR4 7RX

£419,995 - Freehold

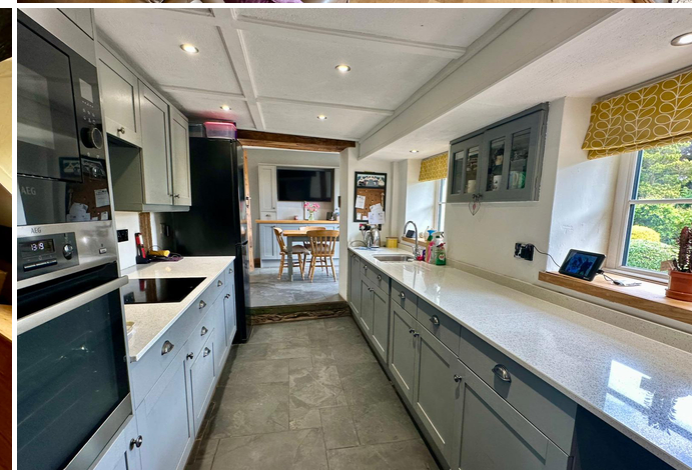
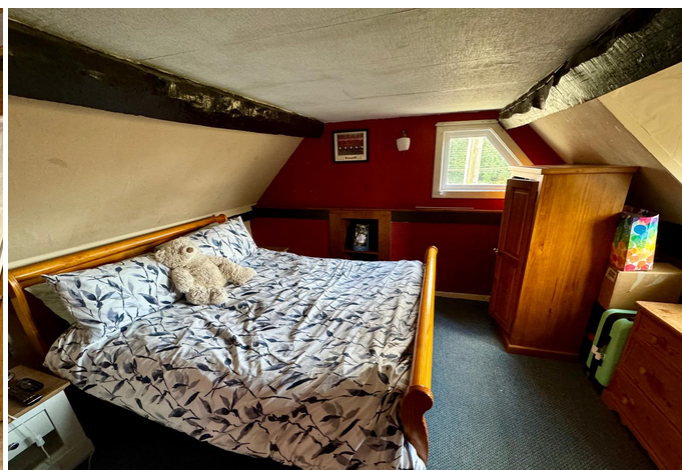
22, Broad Street, Hereford, HR4 9AP 01432 355455 hereford@flintandcook.co.uk

PROPERTY SUMMARY

Situated in a Conservation Area within this popular village a Grade II Listed 2 bedroom detached cottage with large garden. The property has the added benefit of gas central heating, driveway parking, garage and we highly recommend an internal inspection.

POINTS OF INTEREST

- *Grade II Listed property*
- *Detached cottage*
- *Popular village location*
- *2 Bedrooms*
- *Gas central heating*
- *Garage & driveway*
- *Large garden*
- *Viewing advised*



ROOM DESCRIPTIONS

Front entrance door into the Entrance Hall

With mat-well, wooden flooring, recessed spotlighting, smoke alarm, useful storage cupboard with coat storage and single glazed window.

Downstairs Shower Room

Suite comprising double width shower cubicle with electric shower over, low flush WC, vanity wash hand-basin, illuminated mirror, tiled surround, heated towel rail, double glazed window to the rear aspect, recessed spotlighting and vinyl flooring.

Sitting room

Tiled floor, double glazed window to the front aspect, radiator, Inglenook-style fireplace with woodturning stove, stone feature wall, a wealth of character including wooden beams throughout and doors into the

Inner Hallway

Fitted carpet, radiator, stairs leading to the first floor and door into the

Study

Fitted carpet, double glazed window to front and door into the

Lounge

Wooden flooring, double glazed windows to the front aspect, radiator, wooden door and single glazed windows to the front, Inglenook-style fireplace with coal-effect woodburning stove and door into the

Kitchen

Fitted wall and base units with ample worksurfaces, 1½ bowl sink and drainer, integrated dishwasher, integrated hob, integrated oven and microwave, Rayburn, recessed spotlighting, 2 double glazed windows to the rear aspect, upright contemporary radiator, loft hatch and opening into the

Dining Room

Tiled floor, radiator, fitted worksurface with storage under and double glazed French doors opening out onto the rear patio, recessed spotlighting.

A further door leads from the Kitchen into the Utility Area

Tiled floor, gas central heating boiler, under-counter space for washing machine, single glazed window and door out to the side.

First floor landing

Fitted carpet, 2 double glazed windows to the front aspect and 2 single opaque glazed windows to the rear, 3 useful storage cupboards, loft hatch and doors to

Bedroom 2

Radiator, fitted carpet, double glazed window to the front aspect with countryside views, double glazed window to the side aspect and recessed shelving.

Bedroom 1

Fitted carpet, radiator, double glazed window to the front aspect, double glazed window to the side, fitted sink with storage under and 2 useful built-in wardrobe cupboards.

Outside

To the front there is a concrete driveway with parking for several vehicles and the front garden is laid to stone for low maintenance, enclosed by stone walling with a range of plants and shrubs. There is access to the GARAGE with up-and-over door and access to the rear garden. Outside tap. To the side of the property there is a lane with access down to gates at the rear end of the garden with access to the second garage. The French doors open out onto a southeast facing paved patio area leading onto the very large garden, mainly laid to lawn with an array of plants and shrubs. Outside storage shed. Outside store. 2 greenhouses. An enclosed chicken coop and a range of plants and shrubs, enclosed by hedging and fencing. The whole extends to approximately 1/4 of an acre.

Services

Mains water, electricity, drainage and gas are connected. Telephone (subject to transfer regulations). Gas-fired central heating.

Outgoings

Council tax band D payable 2023/24 £2330

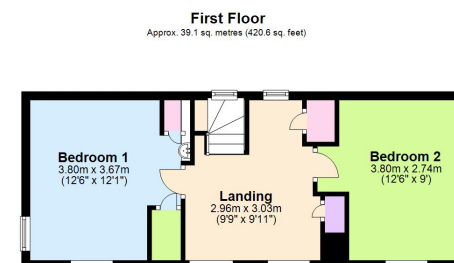
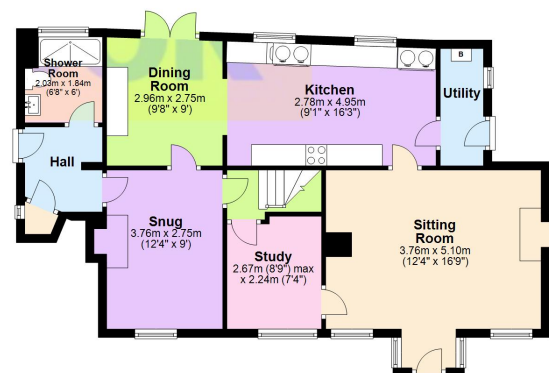
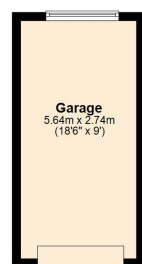
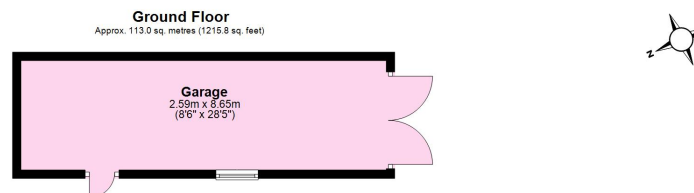
Water and drainage - rates are payable/metered supply.

Money laundering regulations

Prospective purchasers will be asked to produce identification, address verification and proof of funds at the time of making an offer.

Viewing

Strictly by appointment through the Agent, Flint & Cook, Hereford (01432) 355455.



Total area: approx. 152.0 sq. metres (1636.4 sq. feet)

This plan is for illustrative purposes only
Plan produced using PlanUp

These particulars are prepared for the guidance only of prospective purchasers. They are intended to give a fair and overall description of the property and do not constitute the whole or any part of an offer or contract. Any information contained herein (whether in text, plans or photographs) is given in good faith but should not be relied upon as being a statement or representation of fact. Any plans provided by the agents and/or with the sales particulars are intended for guidance purposes only; we cannot guarantee the accuracy and scale of any plans, and they do not form any part of the sales contract. Nothing in these particulars shall be deemed to be a statement that the property is in good condition or otherwise nor that any services or facilities are in good working order. Any movable contents, fixtures and fittings, (whether wired or not) referred to in these property particulars (including any shown in the photographs) are, unless the particulars say otherwise, excluded from the sale. In the event that the buyer proposes to purchase any movable contents or include them in any offer for the property, the buyer cannot in any respect imply any such inclusion from the property particulars. Any areas, measurements or distances referred to herein are approximate only and may be subject to amendment. It should not be assumed that the property has all necessary planning, building regulation or other consents and these matters must be verified by an intending purchaser. The information in these particulars is given without responsibility on the part of the agents or their clients and neither the agents nor their employees have any authority to make or give any representations or warranties whatever in relation to this property.

Flint & Cook Privacy Statement: We take your privacy very seriously. Your data will not be shared with any other parties without your express permission. Our Data protection Policy can be read in full on the Flint & Cook website, www.flintandcook.co.uk