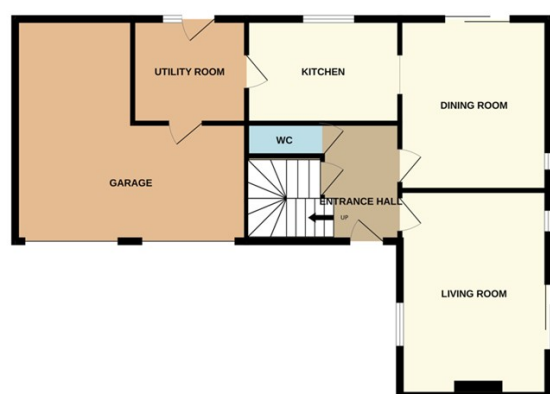




WERRINGTON

£400,000



*** WRAP AROUND GARDEN - PERFECT TO EXTEND SUBJECT TO APPROVED PLANNING *** " Located in a cul de sac in Werrington, this 4 bedroom detached home is perfect for families! Featuring an entrance hall, living room, dining room, kitchen, utility space, double garage (partly converted into the utility space), 4 bedrooms with an en-suite to bedroom one, family bathroom and a downstairs WC. There is also an EV charger. Viewings are essential to appreciate this home. EPC Energy Rating - D/Council Tax Band - D "