


This two double bedroom Victorian terraced cottage is nestled away on a cul-de-sac nearby Bath Road and within easy access of the M4 (Junction 5) and Heathrow Airport. The property has been extended on the rear and into the loft. The ground floor features two reception rooms with the inclusion of a 12ft lounge with a functional gas fireplace and a 13ft dining room with wood flooring. There is also an open plan fitted kitchen, a 10ft conservatory and a four piece family bathroom. On the first floor there are two double-sized bedrooms with the second bedroom providing a ladder and access to the loft room with skylights. Externally the rear garden has been landscaped whilst to the front there is off street parking for one car. Properties like this are rarely available to the market and this home would be excellent purchase for a first time buyer or investor alike.



Property Information


- 

TWO DOUBLE BEDROOM VICTORIAN COTTAGE
- 


12 FT LOUNGE
- 

OPEN PLAN FITTED KITCHEN
- 


10FT CONSERVATORY
- 

EASY ACCESS INTO HEATHROW/M4/M25
- 

EXTENDED TO THE REAR
- 

13FT DINING ROOM
- 

FOUR PIECE BATHROOM
- 


LOFT ROOM WITH SKYLIGHTS
- 

NO ONWARD CHAIN FOR A POTENTIAL QUICK SALE



x2

Bedrooms



x2

Reception Rooms



x1

Bathrooms



x1

Parking Spaces



Y

Garden



N

Garage

Transport Links:

NEAREST STATIONS:

- Langley (1.2 miles)
- Iver (1.6 miles)
- Sunnymeads (1.9 miles)

The location is most convenient with the 81 bus that services London Road.

Junction 5 of the M4 motorway is close by with links to M25 and M40.

Local Schools:

PRIMARY SCHOOLS:

- Foxborough Primary School

0.3 miles away
- Holy Family Catholic Primary School

0.7 miles away
- Colnbrook Church of England Primary School

0.7 miles away

The Langley Heritage Primary
0.8 miles away

SECONDARY SCHOOLS:

Langley Grammar School
1 mile away

The Langley Academy
1.2 miles away

Ditton Park Academy
1.7 miles away

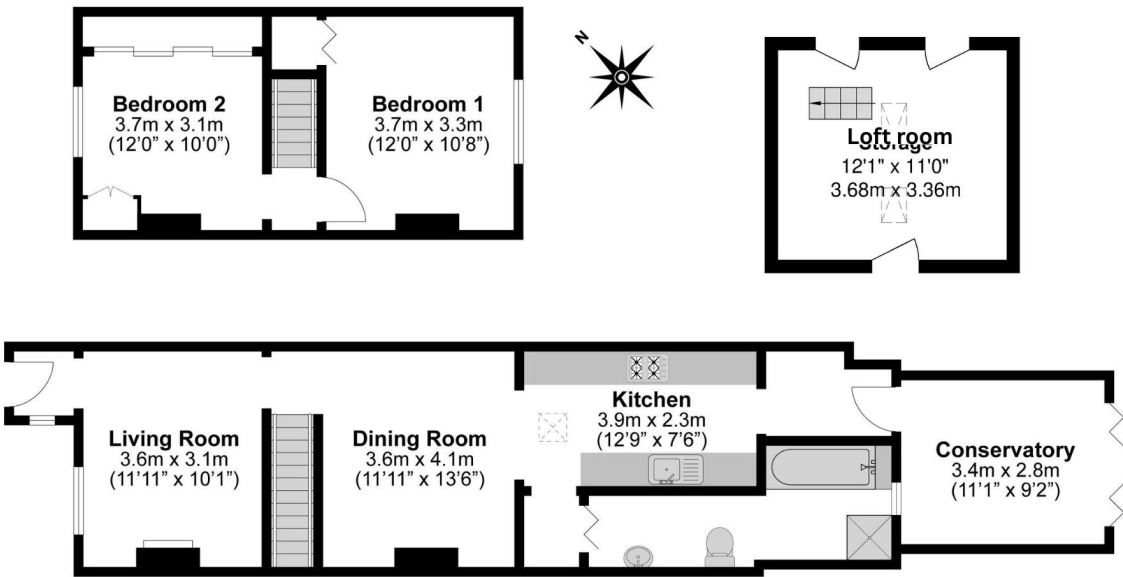
St Bernard's Catholic Grammar School
2 miles away

Council Tax
Band C

Floor Plan



Total Approximate Floor Area
952 Square feet
88 Square metres



Illustrations are for identification purposes only,
measurements are approximate, not to scale.

Prospective purchasers should be aware that these sales particulars are intended as a general guide only and room sizes should not be relied upon for carpets or furnishing. We have not carried out any form of survey nor have we tested any appliance or services, mechanical or electrical. All maps are supplied by Goview.co.uk from Ordnance Survey mapping. Care has been taken in the preparation of these sales particulars, which are thought to be materially correct, although their accuracy is not guaranteed and they do not form part of any contract.

