

**2 Bedroom(s), Apartment, Leasehold**

**Cornflower Drive, Bessacarr, Doncaster.**



- 3D Virtual Tour Available
- Two Bedroom Ground Floor Apartment
- Lounge with Juliet Balcony
- Family Bathroom
- Local Amenities, Schools and Transport Links

- No Chain
- Kitchen
- En Suite to Master Bedroom
- Allocated Parking Within Communal Car Park
- Popular Location

**£110,000**  
**For Sale**

*Book your viewing today* Tel: 01302 247754

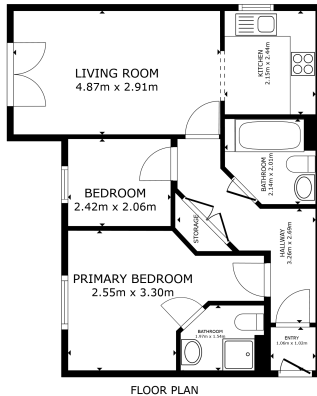


## Owner's View

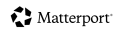
This well presented two bedroom ground floor apartment is in a highly sought after area of Bessacarr and is close to local schools, shops and parks. It is tucked away in the corner of a desirable housing estate and being based on the ground floor has many advantages and can be ideal for those people with families or people that have mobility issues.

## Internal

### Floor Plan



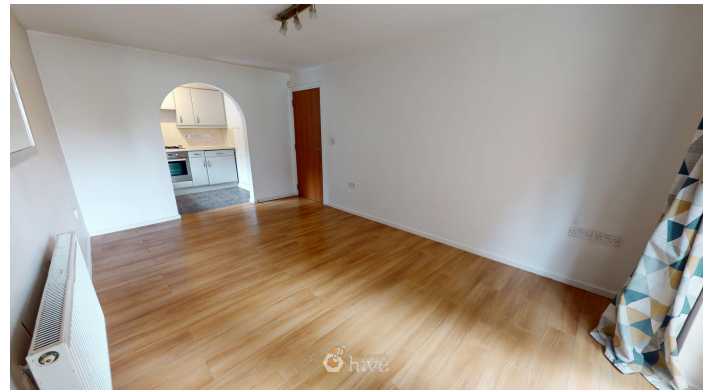
GROSS INTERNAL AREA  
FLOOR PLAN 92.1 sq ft  
TOTAL - 92.1 sq ft  
SIZES AND DIMENSIONS ARE APPROXIMATE, ACTUAL MAY VARY



## Kitchen



## Lounge



## Master Bedroom & En Suite







**Bedroom**



**Family Bathroom**



**External**

**Front Aspect**



## Property Information

Council Tax Band - B

Utilities - Mains Gas, Mains Electricity, Mains Water

Water Meter - Yes

Tenure - Leasehold

Solar Panels - No

Space Heating System - Gas Boiler with radiators

Approximate Heating System Installation Date - 1/1/2019

Water Heating System - Gas boiler (Combi)

Approximate Water Heating Installation Date -

Boiler Location - Kitchen

Approximate Electrical System Installation Date -

Permanent Loft Ladder - No

Loft Insulation - Yes

Loft Boarded out - Yes

Whilst every effort is made to ensure that the information contained in these particulars is reliable, they do not constitute or form part of an offer or any contract. The Property Hive accept no liability for the accuracy of the contents, and therefore they should be independently verified by prospective buyers or tenants before agreeing an offer. All measurements provided are approximate and should be verified before exchange of contracts. No appliances, fixtures or fittings have been tested and should be checked by the buyer before exchange of contracts to ensure they are in good working order.

## Energy Performance Certificate

