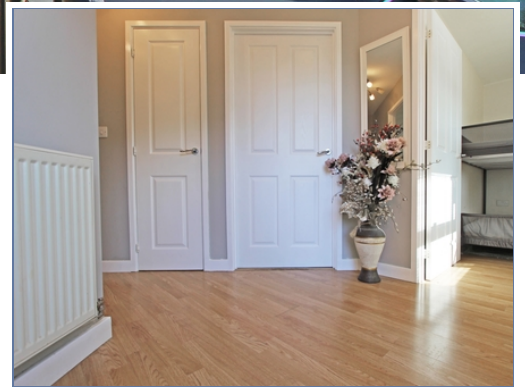




**21 Southland Drive, Bletchley, Milton  
Keynes, Buckinghamshire, MK2 3FE**

**£110,000 Leasehold**

- Two bedroom
- Ground floor maisonette
- Allocated parking
- Desirable location of Bletchley
- Within walking distance to Bletchley Railway Station
- 50% Shared ownership
- Combined ground rent and service charge of £337.09pcm
- Stunning outlook to the canal
- EPC Rating C





## **INTERIOR**

### **Entrance Hall**

Doors leading to:

### **Lounge Diner**

4.21m x 3.40m (13' 10" x 11' 2")

### **Kitchen**

3.66m x 2.45m (12' 0" x 8' 0")

### **Family Bathroom**

Fitted to comprise three piece suite

### **Bedroom One**

4.06m x 2.89m (13' 4" x 9' 6")

### **Bedroom Two**

3.07m x 1.96m (10' 1" x 6' 5")

## **EXTERIOR**

### **Allocated Parking**

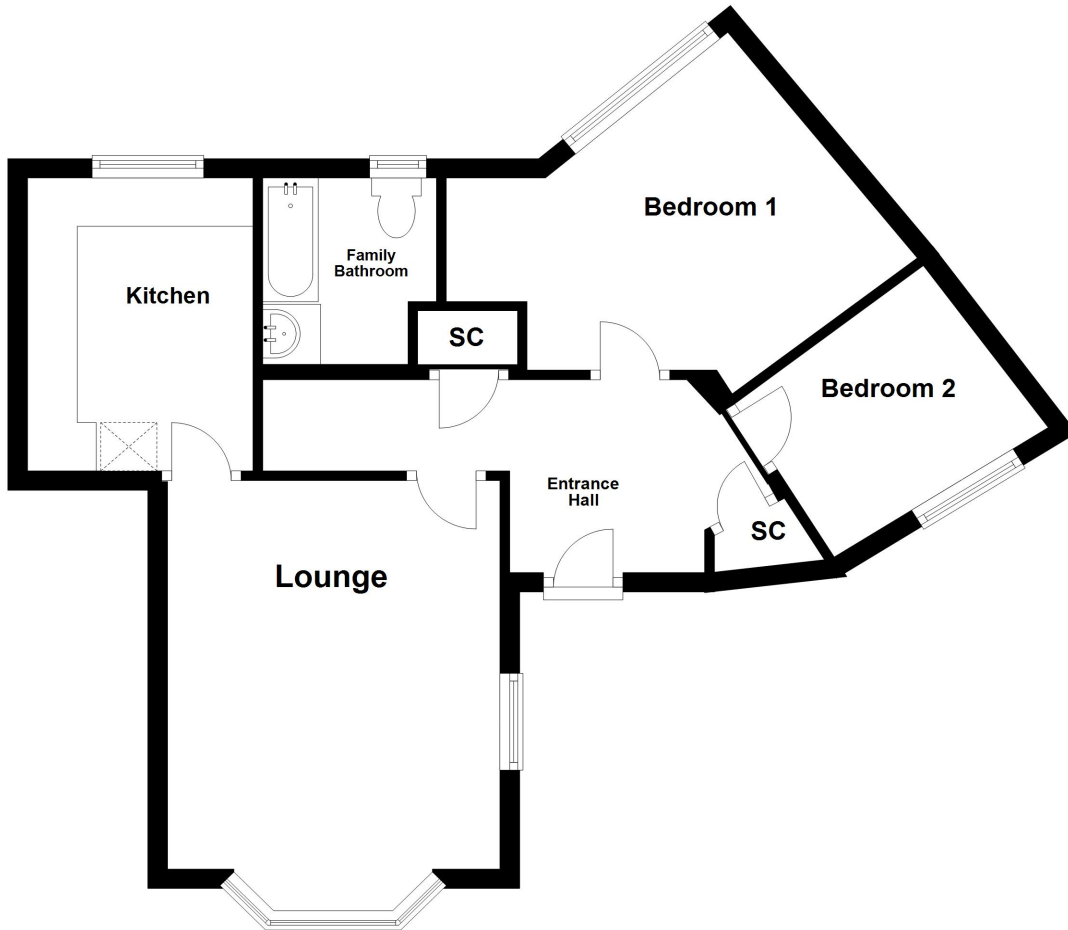
Space for one vehicle

### **Communal Garden**

### **Disclaimer**

Whilst we have endeavoured to prepare our sales particulars accurately none of the services, appliances or equipment have been tested. A buyer should satisfy themselves on such matters prior to purchase. Any measurements or distances mentioned in these particulars are for guide reference only. If such particulars are fundamental to a purchase, buyers should rely on their own enquiries. All enquiries should be directed to Elevation Estate Agents in the first instance.

# Ground Floor



Floor plans are for layout purposes only  
Plan produced using PlanUp.

Energy Efficiency Rating			Environmental Impact (CO <sub>2</sub> ) Rating		
	Current	Potential		Current	Potential
<i>Very energy efficient - lower running costs</i>			<i>Very environmentally friendly - lower CO<sub>2</sub> emissions</i>		
(92 to 100) <b>A</b>			(92 to 100) <b>A</b>		
(81 to 91) <b>B</b>			(81 to 91) <b>B</b>		89
(69 to 80) <b>C</b>	77	79	(69 to 80) <b>C</b>	80	
(55 to 68) <b>D</b>			(55 to 68) <b>D</b>		
(39 to 54) <b>E</b>			(39 to 54) <b>E</b>		
(21 to 38) <b>F</b>			(21 to 38) <b>F</b>		
(1 to 20) <b>G</b>			(1 to 20) <b>G</b>		
<i>Not energy efficient - higher running costs</i>			<i>Not environmentally friendly - higher CO<sub>2</sub> emissions</i>		
<b>England, Wales &amp; N.Ireland</b>	EU Directive 2002/91/EC		<b>England, Wales &amp; N.Ireland</b>	EU Directive 2002/91/EC	

>