







A charming three bedroom Grade II listed spacious and bright spacious cottage in an idyllic village location. This beautifully presented home has some wonderful character features including high ceilings and exposed timbers. Accommodation comprises: GROUND FLOOR - Entrance lobby leading to spacious and welcoming entrance hall, double aspect dining room with deep storage cupboard and walk through opening to the sitting room with impressive open fireplace, kitchen/breakfast room, cloakroom/WC, utility room. First floor - Spacious landing, three bedrooms, luxury spacious bath/shower room. OUTSIDE - The gardens are a particularly attractive feature being well stocked and mature with a variety of plants and shrubs including wisteria and buddleia. The character cottage feel continues with a secluded brick sun terrace and further terrace. Aromatic pretty climbers cover delightful arches and there is a useful brick built store. NO CHAIN. EPC Rating: D

Guide Price £550,000

Tenure Freehold

Property Type Semi-Detached House

Receptions 2

Bedrooms 3

Bathrooms 1

Parking Two spaces

Heating Gas

EPC Rating D

Council Tax Band E
Canterbury City Council



Situation

This beautiful property is idyllically located on 'Church Lane' in the sought after village of Barham. The village is situated at the top of the Elham Valley and to the south of the city of Canterbury. Local amenities include a primary school and village community store and post office. The City of Canterbury has a range of secondary schools. A2, Approx. 2 miles. Canterbury West railway station with high speed services Approx. 8 miles. Channel Tunnel Terminal Approx. 13 miles. There is a regular bus service from the village to both Canterbury and Folkestone.

Ground floor

Entrance lobby

Spacious entrance hall

Kitchen/breakfast room

11' 1" x 10' 3" (3.38m x 3.12m)

Sitting room

15' 3" x 13' 2" (4.65m x 4.01m)

Dining room

13' 2" x 8' 10" (4.01m x 2.69m)

First floor

Landing

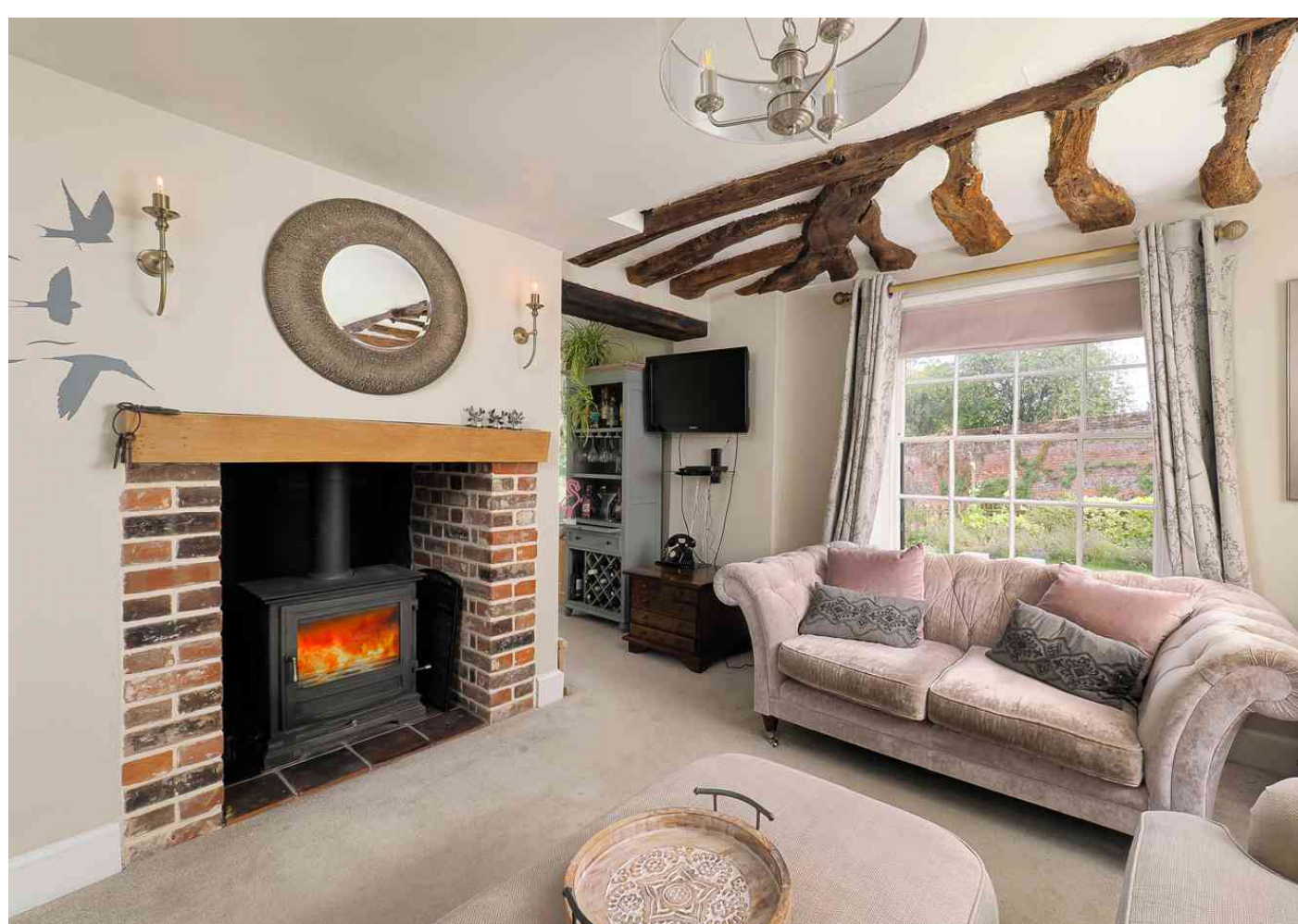
Stylish shower/bathroom

Bedroom one

11' 3" x 9' 6" (3.43m x 2.90m)

Bedroom two

11' 7" x 10' 3" (3.53m x 3.12m)



Bedroom three

15' 11" x 9' 10" (4.85m x 3.00m)

Outside

Gardens

The character cottage feel continues to the front and rear gardens which are laid to lawn. To the rear of the property there is a secluded brick sun terrace and further terrace. Aromatic pretty climbers cover delightful arches and there is a useful brick built store.

Two off road parking spaces







Approximate Gross Internal Area (Including Low Ceiling) = 112 sq m / 1204 sq ft

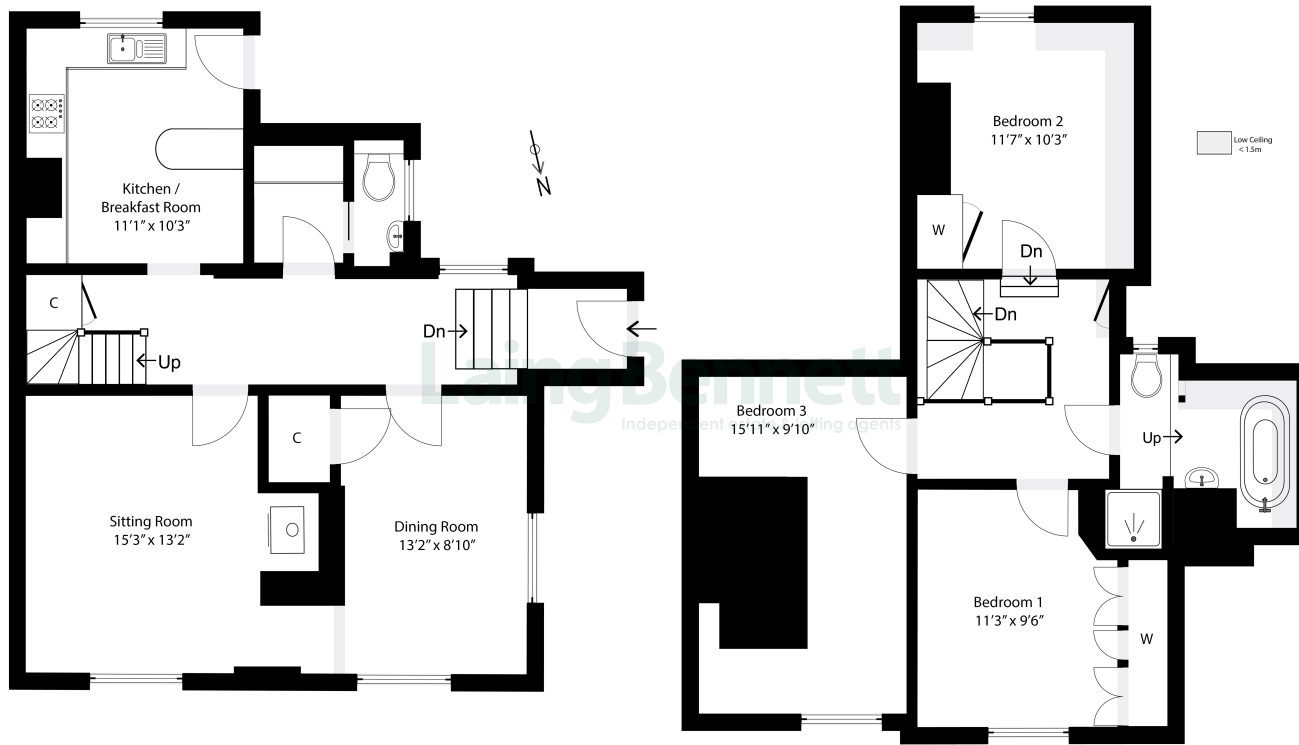
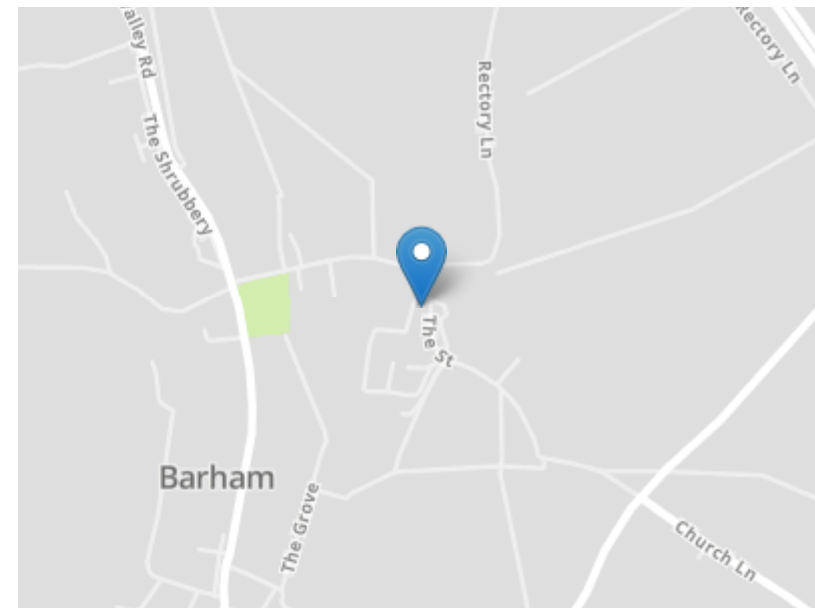


Illustration for identification purposes only. Measurements are approximate. Dimensions given are between the widest points. Not to scale. Outbuildings are not shown in actual location.



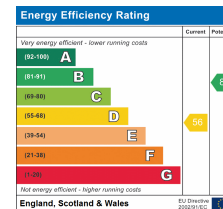
Need to book a viewing?

If you would like to book a viewing please contact our office on 01303 863393 or email sales@laingbennett.co.uk

See all our properties at



www.laingbennett.co.uk



The Estate Office
8 Station Road
Lyminge
Folkestone
Kent
CT18 8HP



These property details are intended to give a fair description and give guidance to prospective Purchaser/Tenant. They do not constitute an offer or contract of Sale/Tenancy and all measurements are approximate. While every care has been taken in the preparation of these details neither Laing Bennett Ltd nor the Vendor/ Landlord accept any liability for any statement contained herein. Laing Bennett Ltd has not tested any services, appliances, equipment or facilities, and nothing in these details should be deemed to be a statement that they are in good working order or that the property is in good structural condition or otherwise. We advise all applicants to commission the appropriate investigations before Exchange of Contracts/entering into a Tenancy Agreement. It should not be assumed that any contents/furnishing, furniture etc. photographed are included in the Sale/Tenancy, nor that the property remains as displayed in the photographs. No person in the employment of Laing Bennett Ltd has authority to make or give any representation or warranty whatever in relation to this property.