



28 Cavendish Street
Keighley
BD21 3RG



7 Clock View Street, Keighley,
West Yorkshire, BD20 6BB

£55,000

T: 01535 664609

W: www.dayandcoestateagents.co.uk

E: keighley@dayandcoestateagents.co.uk

- End Of Terrace (Back To Back)
- In Need Of Full Refurbishment
- NO CHAIN

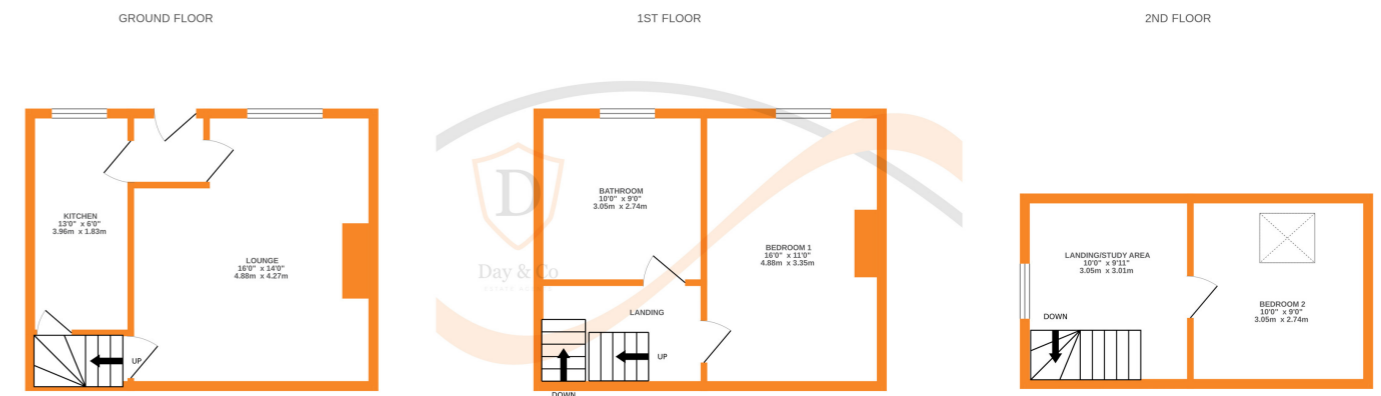
- Two Double Bedrooms
- Accommodation Over Three Floors
- EPC Rating D

SUMMARY

A 2 BEDROOM END OF TERRACE, IN NEED OF REFURBISHMENT - POPULAR RESIDENTIAL LOCATION OF BEECHCLIFFE!! Having excellent access to Keighley town centre, accommodation over 3 floors - OFFERED FOR SALE WITH NO ONWARD CHAIN!! EPC RATING D.

FULL DESCRIPTION

A two bedroom end of terrace in need of full refurbishment, situated in the popular residential location of Beechcliffe with excellent access to Keighley town centre. The three story accommodation comprises of an entrance vestibule, the kitchen has base and wall mounted units, integrated hob, plumbing for an automatic washing machine and access to a storage cellar. The lounge has a gas fire, double glazed window to the front. To the first floor the spacious bathroom has a sunken bath, WC, wash hand basin, there is a double bedroom on this level. To the second floor there is a study area and bedroom with double glazed Velux window. Offered for sale with no onward chain, EPC Rating D.



Whilst every attempt has been made to ensure the accuracy of the floorplan contained here, measurements of doors, windows, rooms and any other items are approximate and no responsibility is taken for any error, omission or mis-statement. This plan is for illustrative purposes only and should be used as such by any prospective purchaser. The services, systems and appliances shown have not been tested and no guarantee as to their operability or efficiency can be given.
Made with Metropix ©2023